

METRO PICTURES



Jim Shaw

March 17 – April 21, 2012

Opening reception: Saturday, March 17th, 5:30 – 6:30 pm

For Jim Shaw's exhibition at Metro Pictures the Los Angeles-based artist presents a large mural and 20 drawings comprising a comic book that center on his fictional religion Oism, a narrative Shaw has been developing for more than 20 years. The works draw on eccentric aspects of American history and quirky old imagery to illustrate part two of Shaw's proposed, four-part Oist prog rock opera. Its story, told through the comic book, follows two small-time crooks as they break into the Museum of Oist History in Omaha. Seeking refuge from encroaching FBI agents the pair ducks into a 24-hour wig museum where a helpful curator hides them beneath wigs that inexplicably render them invisible and transport them to the ancient homeland of the religion's founding deity O.

The mural *The Rinse Cycle* (2012) is Shaw's latest painting on found canvas theater backdrops. Executed in the tradition of 1970s album art, Shaw says *The Rinse Cycle* "symbolically represents the opera's second movement in which a group of oversized beehive hairdos hover around a desert landscape they share with the interior view of a washing machine in mid-cycle." The 20-page comic book "Into the Void" (2012) illustrates the opera's themes and symbols in the style of, as Shaw describes, "pre-code 50s crime and horror comics, with a religious didactic aspect thrown into the mix." Audacious 1960s hairstyles, comic books and Christian ephemera all play into the elaborate visualization of Shaw's outlandish yet incisive mythology.

The recently published book, "My Mirage" (2011), includes all the works from Shaw's renowned "Billy" series, which chronicles the transition of a white middle-class American kid named Billy from acid-dropping teen to pagan cult member and finally "reborn" Christian fundamentalist.

One-person exhibitions include: Kunstmuseum Luzern, Lucerne, Switzerland (2011); CAPC Musée d'art contemporain, Bordeaux, France (2011); MoMA PS 1, New York (2007); Magasin Center of Contemporary Art, Grenoble, France (2003); Swiss Institute, New York (2002); and Frankfurt Kunstverein (1998). Shaw's work has been in group exhibitions at: Schirn Kunsthalle, Frankfurt (2011); Walker Art Center, Minneapolis (2011); Los Angeles County Museum (2010); New Museum, New York (2010); The Museum of Modern Art, New York (2009/10); Centre Pompidou, Paris (2006); and Museum of Contemporary Art, Los Angeles (2006).

Gallery hours: Tuesday – Saturday, 10 am – 6 pm

For more information, please contact Alexander Ferrando at alexander@metropictures.com or 212 206 7100

Image: *The Rinse Cycle* (detail), 2012. Acrylic on muslin, 150 x 230 inches (381 x 584.2 cm)

METRO PICTURES



Jim Shaw
Rinse Cycle, 2012
Acrylic on muslin
150 x 230 inches
381 x 584.2 cm
(MP# 253)



Jim Shaw
Untitled (Frog & Cat), 1974
Gouache and ink on watercolor paper
3 1/2 x 5 1/2 inches (image size)
8.9 x 14 cm
(MP# 254)



Jim Shaw
Untitled (My But You Look Sweet),
1974
Watercolor on watercolor paper
3 1/2 x 5 1/2 inches (image size)
8.9 x 14 cm
(MP# 255)



Jim Shaw
Two of a Kind, 1974
Watercolor and ink on watercolor
paper
3 1/2 x 5 1/2 inches (image size)
8.9 x 14 cm
(MP# 256)



Jim Shaw

Untitled (Permit Me Mister Good),
1974

Watercolor on watercolor paper
3 1/2 x 5 1/2 inches (image size)
8.9 x 14 cm
(MP# 257)



Jim Shaw

Hoggin' Th-Picture, 1974

Gouache and ink on watercolor paper
3 1/2 x 5 1/2 inches (image size)
8.9 x 14 cm
(MP# 258)



Jim Shaw

Detroit Postcards, 1974

Watercolor, gouache and ink on water
color paper
4 1/4 x 6 1/4 inches (portfolio size)
10.8 x 15.9 cm
(MP# 259)



Jim Shaw

Lois Lane Wig Edition, 2011

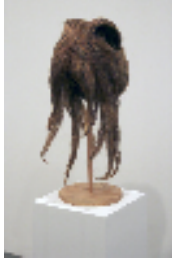
Aqua resin, urethane foam, enamel
paint and base
14 1/2 x 11 1/4 x 13 inches (overall)
36.8 x 28.6 x 33 cm
9 1/4 x 11 1/4 x 13 inches (wig
sculpture)
23.5 x 28.6 x 33 cm
13 x 10 x 10 inches (base)
33 x 25.4 x 25.4 cm
Edition 15/20
(MP# 260)



Jim Shaw

Hollywood Wig (Beehive), 2012

Synthetic hair wig with wood base
Wig - 13 x 9 x 10 inches
33 x 22.9 x 25.4 cm
Base - 13 x 9 x 9 inches
33 x 22.9 x 22.9 cm
(MP# 261)



Jim Shaw

Hollywood Wig (Octopus), 2012
Synthetic hair wig with wood base
Wig - 20 x 10 x 12 inches
50.8 x 25.4 x 30.5 cm
Base - 21 x 9 x 9 inches
53.3 x 22.9 x 22.9 cm
(MP# 262)



Jim Shaw

Forces of Nature/Hair, 2011
Ink on paper
12 x 9 inches (image size)
30.5 x 22.9 cm
14 5/8 x 11 5/8 inches (frame size)
37.1 x 29.5 cm
(MP# D-491)



Jim Shaw

Forces of Nature/Hair, 2011
Ink on paper
12 x 9 inches (image size)
30.5 x 22.9 cm
14 5/8 x 11 5/8 inches (frame size)
37.1 x 29.5 cm
(MP# D-494)



Jim Shaw

Forces of Nature/Hair, 2011
Ink on paper
12 x 9 inches (image size)
30.5 x 22.9 cm
14 5/8 x 11 5/8 inches (frame size)
37.1 x 29.5 cm
(MP# D-495)



Jim Shaw

Forces of Nature/Hair, 2011
Ink on paper
12 x 9 inches (image size)
30.5 x 22.9 cm
14 5/8 x 11 5/8 inches (frame size)
37.1 x 29.5 cm
(MP# D-497)



Jim Shaw

Forces of Nature/Hair, 2011

Ink on paper

12 x 9 inches (image size)

30.5 x 22.9 cm

14 5/8 x 11 5/8 inches (frame size)

37.1 x 29.5 cm

(MP# D-498)



Jim Shaw

Forces of Nature/Hair, 2011

Ink on paper

12 x 9 inches (image size)

30.5 x 22.9 cm

14 5/8 x 11 5/8 inches (frame size)

37.1 x 29.5 cm

(MP# D-499)



Jim Shaw

Man with 4 heads drawing, 2011

Pencil on paper

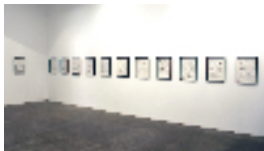
72 1/4 x 54 inches (image size)

183.5 x 137.2 cm

75 1/4 x 57 inches (frame size)

191.1 x 144.8 cm

(MP# D-504)



Jim Shaw

Into the Void, 2012

20 ink on board drawings

21 x 15 inches (each image size)

53.3 x 38.1 cm

23 3/8 x 17 3/8 inches (each frame size)

59.4 x 44.1 cm

(MP# D-505)



Jim Shaw

Blueprint, 1977

Blue print drawing

21 1/4 x 30 inches (image size)

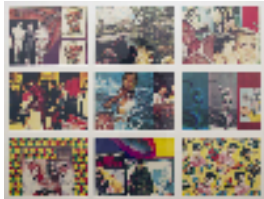
54 x 76.2 cm

(MP# D-507)

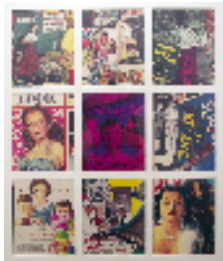


Jim Shaw
Blueprint, 1977
Blue print drawing
20 3/4 x 30 inches (image size)
52.7 x 76.2 cm

(MP# D-508)



Jim Shaw
Untitled, 1976
9 Color Xeroxes
8 1/2 x 11 inches (each image size)
21.6 x 27.9 cm
31 7/8 x 39 3/8 inches (total frame size)
81 x 100 cm
(MP# D-512)



Jim Shaw
Untitled, 1976
9 Color Xeroxes
11 x 8 1/2 inches (each image size)
27.9 x 21.6 cm
39 3/8 x 31 7/8 inches (total frame size)
100 x 81 cm
(MP# D-513)



Jim Shaw
Black and white Xerox, 1975
5 Black and white Xerox
2 part - 8 1/4 x 13 3/4 inches (image size)
21 x 34.9 cm
3 part - 13 3/4 x 8 1/4 inches (image size)
34.9 x 21 cm

(MP# D-521)



Jim Shaw
Black and white Xerox, 1975
9 Black and white Xerox
8 1/4 x 13 3/4 inches (each image size)
21 x 34.9 cm

(MP# D-523)



Jim Shaw

Black and white Xerox, 1975

9 Black and white Xerox

13 3/4 x 8 1/4 inches (each image size)

34.9 x 21 cm

(MP# D-524)



Jim Shaw

Untitled (Hair drawing), 2012

Airbrush and ink on paper

58 x 46 inches (image size)

147.3 x 116.8 cm

61 x 49 inches (frame size)

154.9 x 124.5 cm

(MP# D-567)



Jim Shaw

Dream Drawing ("Eating a hotdog in Tijuana...") and Dream Drawing ("I come upon displays of 1940s gummy wrapper jewelry"), 1992

Pencil on paper

12 x 9 inches (each image size)

30.5 x 22.9 cm

19 x 16 inches (each frame size)

48.3 x 40.6 cm

(MP# D-568)