

# DAVID KORDANSKY GALLERY

For immediate release

**Elad Lassry**

***Untitled (Presence 2005)***

**a performance work featuring members of the New York City Ballet**

**Friday, March 2**

**8:00pm**

**Hayworth Theatre, Los Angeles**

**Tickets by invitation only**

**Valet parking provided**

David Kordansky Gallery is pleased to announce *Untitled (Presence 2005)*, a performance work by Elad Lassry featuring members of the New York City Ballet. *Untitled (Presence 2005)* will take place on March 2, 2012 at the Hayworth Theatre in Los Angeles. It is the initial event associated with Lassry's second solo show at David Kordansky, which will open subsequently on March 23.

Lassry's practice is an investigation of the picture as a philosophical category. While this investigation has taken shape in the form of photographs, it inhabits an increasingly diverse array of media, including drawings, films, sculptures, installation-based works and architectural interventions. Common to each of these typologies is a focus on the way that framing devices—be they physical or conceptual—influence how a viewer experiences a given picture, and the extent to which a picture's context can both defy and define its subject.

With six ballet dancers (three male and three female) and a sculptural set designed by the artist, *Untitled (Presence 2005)* introduces live performance into this matrix. The piece creates a new typology in which choreography, scenography, and movement are treated as formal envelopes. Its choreographic structure has been formed from fragments of iconic dance works, including several by George Balanchine, that have been selected and reconfigured by Lassry; part curatorial, part appropriation-based, this action problematizes the notation of movement as a visual language.

As in earlier works by Lassry that utilize dance, most notably the films, *Untitled (Presence 2005)* explores the range of cultural dichotomies between still and moving images. Here, however, institutional elements particular to live performance—the space of the theatre, the flatness or depth of the stage, the ritualized roles of audience and performer—become the framing devices whose formal characteristics can be foregrounded, altered, or emptied of signification. In the larger context of Lassry's work, the notion of performance brings about a conflation of photographic and actual space, so that the viewer is implicated in the composition of the picture in an unavoidably direct way.

Furthermore, as a work that precedes Lassry's upcoming exhibition, *Untitled (Presence 2005)* will suggest connections between the movement among dancers on a stage and the movement of a viewer through gallery architecture. In both cases, the artist brings specificity to a series of interactions between a subject and its surroundings. Suddenly, a picture is not necessarily about the documentation of an idea, but rather the form in which an idea itself is experienced, a composition of animate and inanimate forms that challenges what can be captured by the lens.

Elad Lassry's achievements have been recognized with major attention from an international array of museums, prizes, and galleries. Earlier this year he was included in the International Pavilion at the 54th Venice Biennale, and was nominated for the Deutsche Börse Prize, which included an exhibition at The Photographers' Gallery in London. Upcoming and recent solo

# DAVID KORDANSKY GALLERY

exhibitions include shows at the Whitney Museum of American Art, New York; Kunsthalle Zurich, Switzerland; Contemporary Art Museum, St. Louis; Kunstneres Hus, Oslo, Norway; Rat Hole Gallery, Tokyo, Japan; Fondazione Galleria Civica, Trento, Italy; and The Kitchen, New York.

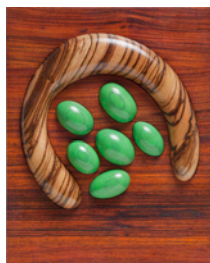
Over the last two years Lassry has also been included in some of the top group and survey exhibitions internationally, such as *New Photography 2010*, Museum of Modern Art, New York; *Les Rencontres d'Arles 2010 / Edition 41*, Arles, France; *American Exuberance*, Rubell Family Collection, Miami; *The Anxiety of Photography*, Aspen Art Museum, Aspen, Colorado; *Secret Societies. To Know, To Dare, To Will, To Keep Silence*, Schirn Kunsthalle Frankfurt, Germany and CAPC de Bordeaux, France; *Time Again*, SculptureCenter, New York; *Dance with Camera*, Institute of Contemporary Art, Philadelphia; and *The Generational: Younger than Jesus*, New Museum, New York.

# DAVID KORDANSKY GALLERY

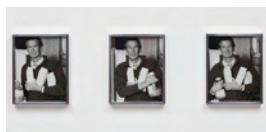
**Elad Lassry**  
**March 23, 2012 — May 26, 2012**



**Elad Lassry**  
*Untitled (Wall, Los Angeles Blue and Nude), 2012*  
plywood, drywall, plaster, poplar, paint  
418 x 63.25 x 7.75 inches  
(1061.7 x 160.7 x 19.7 cm)  
unique  
Inv# EL 12.058



**Elad Lassry**  
*Untitled (Rosewood Picture), 2012*  
rosewood, zebrawood, varnish, paint  
14.5 x 11.5 x 2 inches  
(36.8 x 29.2 x 5.1 cm)  
unique  
Inv# EL 12.026



**Elad Lassry**  
*Man (Juice, Milk Cartons), 2012*  
silver gelatin prints, aluminum frames  
10.5 x 37.5 x 1.5 inches  
(26.7 x 95.3 x 3.8 cm)  
three framed prints, each: 10.5 x 8.5 x 1.5 inches  
(26.7 x 21.6 x 3.8 cm)  
Edition of 3, 2 AP  
Inv# EL 12.057



**Elad Lassry**  
*Man (Ice), 2012*  
silver gelatin prints, aluminum frames  
10.5 x 23 x 1.5 inches  
(26.7 x 58.4 x 3.8 cm)  
two framed works, each: 10.5 x 8.5 x 1.5 inches  
(26.7 x 21.6 x 3.8 cm)  
Edition of 3, 2 AP  
Inv# EL 12.042



**Elad Lassry**

*Man (Library)*, 2012  
silver gelatin print, aluminum frame  
10.5 x 8.5 x 1.5 inches  
(26.7 x 21.6 x 3.8 cm)  
Edition of 3, 2 AP  
Inv# EL 12.046



**Elad Lassry**

*Man (Reading)*, 2012  
silver gelatin prints, aluminum frames  
10.5 x 8.5 x 1.5 inches  
(26.7 x 21.6 x 3.8 cm)  
four framed works, each: 10.5 x 8.5 x  
1.5 inches  
(26.7 x 21.6 x 3.8 cm)  
Edition of 3, 2 AP  
Inv# EL 12.047



**Elad Lassry**

*Chandelier*, 2012  
charcoal drawing, walnut frame  
14.5 x 11.5 x 1.5 inches  
(36.8 x 29.2 x 3.8 cm)  
unique  
Inv# EL 12.048



**Elad Lassry**

*Egg Centerpiece*, 2012  
charcoal drawing, walnut frame  
14.5 x 11.5 x 1.5 inches  
(36.8 x 29.2 x 3.8 cm)  
unique  
Inv# EL 12.049



**Elad Lassry**

*French Fries*, 2012  
charcoal drawing, walnut frame  
14.5 x 11.5 x 1.5 inches  
(36.8 x 29.2 x 3.8 cm)  
unique  
Inv# EL 12.050



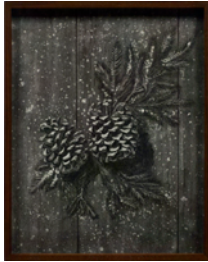
**Elad Lassry**  
*Garland*, 2012  
charcoal drawing, walnut frame  
14.5 x 11.5 x 1.5 inches  
(36.8 x 29.2 x 3.8 cm)  
unique  
Inv# EL 12.051



**Elad Lassry**  
*Jars (For Holiday)*, 2012  
charcoal drawing, walnut frame  
14.5 x 11.5 x 1.5 inches  
(36.8 x 29.2 x 3.8 cm)  
unique  
Inv# EL 12.052



**Elad Lassry**  
*Marshmallows (For Holiday)*, 2012  
charcoal drawing, walnut frame  
14.5 x 11.5 x 1.5 inches  
(36.8 x 29.2 x 3.8 cm)  
unique  
Inv# EL 12.053



**Elad Lassry**  
*Pine cones*, 2012  
charcoal drawing, walnut frame  
14.5 x 11.5 x 1.5 inches  
(36.8 x 29.2 x 3.8 cm)  
unique  
Inv# EL 12.054



**Elad Lassry**  
*Pine cone, Poinsettia, Candle*, 2012  
charcoal drawing, walnut frame  
14.5 x 11.5 x 1.5 inches  
(36.8 x 29.2 x 3.8 cm)  
unique  
Inv# EL 12.055



**Elad Lassry**  
*Wedding Favors*, 2012  
charcoal drawing, walnut frame  
14.5 x 11.5 x 1.5 inches  
(36.8 x 29.2 x 3.8 cm)  
unique  
Inv# EL 12.056



**Elad Lassry**  
*Untitled (Green Bed)*, 2012  
beech wood, paint  
28 x 36 x 20 inches  
(71.1 x 91.4 x 50.8 cm)  
unique  
Inv# EL 12.037



**Elad Lassry**  
*Stripes and Boards*, 2012  
c-print, painted frame  
14.5 x 11.5 x 1.5 inches  
(36.8 x 29.2 x 3.8 cm)  
Edition of 5, 2 AP  
Inv# EL 12.029



**Elad Lassry**  
*Sterling Silver Candleholder*, 2012  
c-print, aluminum frame  
14.5 x 11.5 x 1.5 inches  
(36.8 x 29.2 x 3.8 cm)  
Edition of 5, 2 AP  
Inv# EL 12.030



**Elad Lassry**  
*Squirrel 90046*, 2012  
silver gelatin print, walnut frame  
14.5 x 11.5 x 1.5 inches  
(36.8 x 29.2 x 3.8 cm)  
Edition of 5, 2 AP  
Inv# EL 12.028