

JOSH FAUGHT
KRIS LEMSALU

CONDO LONDON 2018
KOPPE ASTNER, GLASGOW
HOSTED BY
SADIE COLES HQ, LONDON
13 JANUARY—10 FEBRUARY 2017

For the third iteration of Condo London, Koppe Astner, Glasgow are delighted to present works by Josh Faught and Kris Lemsalu.

Conflating personal and collective histories in response to the history of textiles, Faught's work hinges on investigating notions of support, transition and the passage of time, with a specific interest in the emergence of two-sided, reversible weave structures from the 19th century. Faught's work considers how objects perform in both functional and narrative capacities as both text and textiles, extending narratives around anxious decoration, displaced social codes, and material constructions of the self.

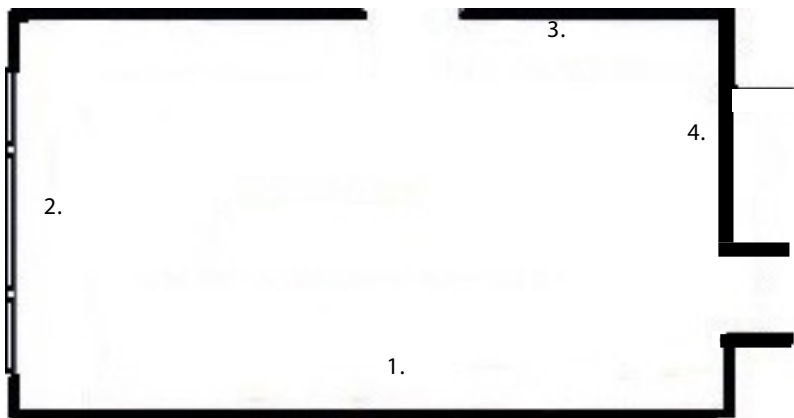
Lemsalu's sculptures, installations and performances fuse the animal kingdom with humankind, nature with the artificial, male with female, beauty with repulsion, lightness with gravity, and life with death. Her broad range of materials include ceramic, porcelain, found objects, fur, leather and wool. The precious and delicate are placed alongside the readymade and disposable, presenting characters that seem to have emerged from a dark yet playful world. Lemsalu's installations reinterpret her personal travels, adventures and relationships with an open door for us to enter.

Josh Faught (b. 1979, Saint Louis) recent solo exhibitions include, 'Sanctuary', St. Mark's Cathedral, Seattle; 'Siyinqaba', US Embassy in Swaziland, Mbabane; 'I know I came into this room for a reason', Kendall Koppe, Glasgow; 'The Mauve Decade', Launch Pad, London; 'BE BOLD for what you stand for, BE CAREFUL for what you fall for', The Neptune Society Columbarium, SF MoMA, San Francisco; 'Snacks, Supports and Something to Rally Around' and The Contemporary Art Museum St. Louis, Missouri. Faught has exhibited in group exhibitions at ICA Boston; The Contemporary Arts Museum, Houston; Grazer Kunstverein, Graz; Oakville Galleries, Ontario; Zurich and The Museum of Contemporary Art, Detroit. Faught is currently featured in 'Trigger: Gender as a Tool and a Weapon' at The New Museum, New York and 'Iconoclasts' at Saatchi Gallery, London. He lives and works in San Francisco.

Kris Lemsalu (b.1985, Tallinn) recent performances and exhibitions include 'Ester Krumbachova', Tranzitdisplay, Prague; 'Going, Going', Performa, NY; 'In Heaven Everything is Fine' at Koko with David Roberts Art Foundation, London; 'Be happy! We do not forget you', Zander Collection, Berlin; 'Beauty and the Beast' Tallinn Art Hall; 'Afternoon Tear Drinker', Kunstraum Lakeside, Klagenfurt; 'Blood Knot Step By Step', Bunshitu Gallery, Tokyo and 'Metamorphosis', KAI 10 / Arthena Foundation, Düsseldorf; Galerie Guido W. Baudach, Berlin and Galerie SVIT, Prague. Lemsalu's forthcoming projects include a three person show at Session, Vienna and solo exhibitions at Goldsmiths CCA, London and Tramway, Glasgow. She is based between Tallinn and Berlin.

KOPPE ASTNER
SUITE 1—2, 6 DIXON STREET, GLASGOW, G1 4AX
WWW.KOPPEASTNER.COM, INFO@KOPPEASTNER.COM, +44 (0) 141 248 8177
WEDNESDAY—SATURDAY 12—6 PM AND BY APPOINTMENT





1. JOSH FAUGHT
Bookends (rasberry rutt),
2014
hand-woven hemp,
hand-dyed from
raspberry to Sahara to
match the 2013/2014
color forecast, Jacquard
woven afghan, badges,
hand-painted bouquet
of flowers on masonite,
linen, and wood
400 × 200 cm

2. KRIS LEMSALU
Mysteriously conceived
and deeply felt ,
2018
porcelain, fabric, metal,
tiara, water,coins and
roses
136 × 134 × 70 cm

3. JOSH FAUGHT
Combining lemon
extract and rose water
in one cookie is like
putting two divas on
stage at the same time,
high pony, 2014
hand-woven silver lame,
red nail polish, and
badge on hand-dyed
linen
107.5 × 92 cm

4. JOSH FAUGHT
Emotional Friend, 2014
hand-woven cotton and
hemp, hand-dyed in
shades from Raspberry
to Sahara to match
the 2013-2014 color
forecast, spilled coffee
(resin), chocolate chip
cookies (plastic), Cathy
mug, greeting cards
from family, and badge
on wood
137 × 104 cm

