

# THE MAYOR GALLERY

21 Cork Street, First Floor, London W1S 3LZ

## LATIN AMERICA

### Works on Paper

9<sup>th</sup> January – 23<sup>rd</sup> February 2018

#### WIFREDO ARCAÏ (b. 1925 Havana, Cuba – d. 1997 Paris, France)



*Macquette 'Composicion Abstracta en Negro'*

1950, Gouache and ink on paper, 7 1/8 x 10 5/8 inches (18 x 27 cm)

\$ 20,000



*Maquette mural*

c. 1950, gouache on cardboard, 4 3/4 x 16 3/4 inches (12 x 42.5 cm)

\$ 25,000



*Untitled*

c. 1950, gouache on paper, 4 7/8 x 7 inches (12.5 x 18 cm)

\$ 20,000



*Untitled*

c. 1950, gouache and ink on paper, 6 1/4 x 9 inches (16 x 23 cm)

\$ 20,000



*Untitled*

c. 1950, gouache and coloured pencil on paper, 6 1/2 x 9 7/8 inches (16.5 x 25 cm)

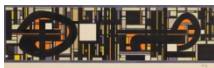
\$ 20,000



*Untitled*

c. 1950, gouache, pencil and ink on paper, 6 x 17 inches (15 x 43 cm)

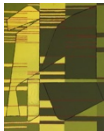
\$ 25,000



*Untitled*

c. 1950, gouache and Indian ink on paper, 4 3/4 x 17 3/4 inches (12 x 45 cm)

\$ 25,000



*Untitled*

c. 1950, gouache on paper, 21 1/2 x 16 1/2 inches (54.5 x 42 cm)

\$ 32,500



*Untitled*

1951, gouache on paper 9 7/8 x 14 inches (25 x 35.5 cm)

\$ 27,500

**CARLOS CAIROLI** (b. 1926 Buenos Aires, Argentina – d. 1995 Chartres, France)



*Composition*

1956, collage, 16 1/8 x 6 1/3 inches (41 x 16 cm)

\$ 6,800

*Inversion*

1971, collage, 8 1/4 x 22 inches (21 x 56 cm)

\$ 7,500



*Regard Pertinent*

1953, ink on paper, 9 7/8 x 18 1/8 (25 x 46 cm)

\$ 9,000



*Rythme*

1963, collage, 25 1/2 x 19 5/8 inches (65 x 50 cm)

\$ 12,000



*Structural*

1953, ink on paper, 10 7/8 x 4 1/8 inches (27.5 x 10.5 cm)

\$ 7,500

*Tension*

1955, ink on paper, 3 1/8 x 11 inches (8 x 28 cm)

\$ 7,500

**LOS CARPINTEROS** (Collective founded 1992 Havana, Cuba)



*Edificio Rio-Mar*

2016, watercolour on paper, 178 x 78 3/4 inches (452 x 200 cm)

\$ 140,000



*Injertos*

1996, watercolour on paper, 22 1/2 x 30 inches (57 x 76 cm)

\$ 22,500

**WALDEMAR CORDEIRO** (b. 1925 Rome, Italy – d. 1973 São Paulo, Brazil)



*Untitled*

c.1950, china ink on paper, 4 1/8 x 6 1/8 inches (10.5 x 15.5 cm)

\$ 80,000



*Untitled*

c. 1948-49, china ink on paper, 8 1/2 x 12 3/4 inches (21.5 x 32.5 cm)

\$ 100,000



*Untitled*

c. 1950, pen and graphite on paper, 16 1/8 x 20 5/8 inches (41 x 52.5 cm)

\$ 120,000

**HAMLET LAVASTIDA** (b. 1983 Havana, Cuba)



*Vida Profilactica (03)*

2014, X-Acto knife paper cut-out drawing, ed.1/2  
39 1/3 x 27 1/2 inches (100 x 70 cm)

\$ 2,500



*Vida Profilactica (09)*

2014, X-Acto knife paper cut-out drawing, ed.1/2  
39 1/3 x 27 1/2 inches (100 x 70 cm)

\$ 2,500



*Vida Profilactica (11)*

2014, X-Acto knife paper cut-out drawing, ed.1/2  
39 1/3 x 27 1/2 inches (100 x 70 cm)

\$ 2,500



*Vida Profilactica (12)*

2014, X-Acto knife paper cut-out drawing, ed.1/2  
39 1/3 x 27 1/2 inches (100 x 70 cm)

\$ 2,500



*Vida Profilactica (19)*

2014, X-Acto knife paper cut-out drawing, ed.1/2  
39 1/3 x 27 1/2 inches (100 x 70 cm)

\$ 2,500



*Vida Profilactica (21)*

2014, X-Acto knife paper cut-out drawing, ed.1/2  
39 1/3 x 27 1/2 inches (100 x 70 cm)

\$ 2,500



*Vida Profilactica (22)*

2014, X-Acto knife paper cut-out drawing, ed.1/2  
39 1/3 x 27 1/2 inches (100 x 70 cm)

\$ 2,500

**MIRA SCHENDEL** (b. 1919 Zurich, Switzerland- d. 1988 São Paulo, Brazil)



*Untitled*

c. 1960s, oil stick on paper, 7 1/2 x 5 1/2 inches (19 x 14 cm)

\$ 47,000



*Untitled*

1964, graphite on rice paper, 18 7/8 x 9 inches (47 x 23 cm)

\$ 35,000



*Untitled*

1965, graphite on rice paper, 18 7/8 x 9 inches (46 x 23 cm)

\$ 35,000



*Untitled (Mandala Serie)*

c.1970's, ink and watercolour on rice paper, 21 5/8 x 9 3/8 inches (55 x 25 cm)

\$ 120,000

**LUIS TOMASELLO** (b. 1915 La Plata, Argentina – d. 2014 Paris, France)



*El Arquero de la Luz (The Archer of Light)*

2013, 10 embossed cards in a silkscreen printed Plexiglas box, ed. of 50  
9 1/2 x 9 1/2 x 3 1/8 inches (24 x 24 x 8 cm)

\$ 5,000