

All back in the skull together

Maccarone
630 Greenwich Street
March 14 – April 18, 2015

Sam Anderson, Lynda Benglis, Kathy Butterly, Jos de Gruyter & Harald Thys, Nicole Eisenman, Bill Jensen, Hans Josephsohn, Birgit Jürgenssen, Eva Kořátková, Sarah Lucas, Alice Neel, Melvin Edward Nelson, Jo Nigoghossian, John O'Reilly, Dorothea Tanning, Miroslav Tichy

Say a body. Where none. No mind. Where none. That at least. A place. Where none. For the body. To be in. Move in. Out of. Back into. No. No out. No back. Only in. Stay in. On In. Still. First the body. No. First the place. No. First both. Now either. Now the other. Sick of the either try the other. Sick of it back sick of the either. So on. Somehow on. Till sick of both. Throw up and go. Where neither. Till sick of there. Throw up and back. The body again. Where none. The place again. Where none. Try again. Fail again. Better again. Of better worse. Fail worse again. Still worse again. Till sick for good. Throw up for good. Go for good. Where neither for good. Good and all.

– Samuel Beckett, *Worstward Ho*

Our philosophy ... reduceth to a single origin and relateth to a single end, and maketh contraries to coincide so that there is one primal foundation both of origin and of end. From this coincidence of contraries, we deduce that ultimately it is divinely true that contraries are within contraries; wherefore it is not difficult to compass the knowledge that every thing is within every other.

– Giordano Bruno, *De immenso*

I to seek among phrases and fragments something unbroken

– Virginia Woolf, *The Waves*

All back in the skull together

Maccarone
630 Greenwich Street
March 14 – April 18, 2015

1/



Lynda Benglis

Swinburne Figure I
2009
Tinted polyurethane
65 x 30 x 21 inches
Edition 2 of 3
LB-15-001

2/



Birgit Jürgensen (1949 – 2003)

Aschenbrödel / Cinderella
1976
Wood, satin, leather
27 x 15.7 x 18 inches
BJU-15-001

3/



Miroslav Tichy (1926 – 2011)

Untitled
Mid 1960s to mid 1980s
Unique black and white silver
gelatin print on Baryt
3 x 5.125 inches
MT-15-003

4/



Sam Anderson

France
2015
Leather, wood, acrylic, graphite,
metal shavings, frog skeleton
30 x 32 x 11 inches
SA-15-003

5/



Dorothea Tanning

Stanza

1978

Oil on canvas

51 x 38 inches

DT-15-001

6/



Eva Kotatkova

Untitled

2014

Collage

9 x 12 inches

EK-15-003

7/



Eva Kotatkova

Untitled

2014

Collage

9 x 12 inches

EK-15-005

8/



Eva Kotatkova

Untitled

2014

Collage

9 x 12 inches

EK-15-004

9/



Eva Kotatkova

Untitled

2014

collage

8.85 x 12.5 inches

EK-15-002

10/



Eva Kotatkova

Double sleep

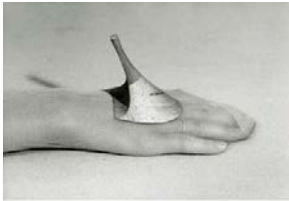
2013

Mixed media

57.4 x 78.7 x 44.4 inches

EK-15-001

11/



Birgit Jürgenssen (1949 - 2003)

Ohne Titel (Improvisation) /

Untitled (Improvisation)

1976

Black and white photograph

Unique, vintage print

5 x 7 inches

BJU-15-002

12/



Hans Josephsohn (1920 - 2012)

Untitled (Verena)

1981

Brass

48 x 31.5 x 31.5 inches

Edition 2 of 6 + 2 APs

HJ-15-001

13/



Sarah Lucas

Pepsi & Cocky #3

2009

C-print

41 x 30.875 x 2 inches

Edition 1 of 6

SL-15-002

14/



Sam Anderson

Untitled busts & coal arrangement

2013

Wood, epoxy clay, wire, plastic,
acrylic, carved coal

32 x 48 x 10 inches

SA-15-002

15/



Jos de Gruyter & Harald Thys

Untitled (18)

2010

C-print mounted on wood

18.9 x 23.6 x .5 inches

Edition 2 of 2 + 2 APs

JG-HT-15-003

16/



Jos de Gruyter & Harald Thys

Untitled (9)

2010

C-print mounted on wood

18.9 x 23.6 x .5 inches

Edition 2 of 2 + 2 APs

JG-HT-15-001

17/



Jos de Gruyter & Harald Thys

Untitled No. 99

2010 - 2011

Mounted Lambda print

18.9 x 23.6 x .5 inches

Edition 2 of 2 + 2 APs

JG-HT-15-004

18/



Jos de Gruyter & Harald Thys

Untitled No. 100

2010 - 2011

Mounted Lambda print

18.9 x 23.6 x .5 inches

Edition 2 of 2 + 2 APs

JG-HT-15-005

19/



Jos de Gruyter & Harald Thys

Untitled (10)

2010

C-print mounted on wood

18.9 x 23.6 x .5 inches

Edition 2 of 2 + 2 APs

JG-HT-15-002

20/



Jo Nigoghossian

Hole with some bars

2010

Cast concrete, steel, faux fur,

resin, black wig

25 x 21 x 15 inches

JN-15-001

21/



Alice Neel (1900 - 1984)

The Sea

1947

Oil on canvas

30 x 24 inches

AN-15-001

22/



Nicole Eisenman

Untitled 16

2014

Mixed media on paper

19.875 x 16 inches

NE-15-002

23/



Nicole Eisenman

Untitled 18

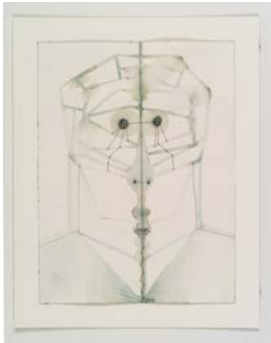
2014

Mixed media on paper

17.875 x 14 inches

NE-15-003

24/



Nicole Eisenman

Untitled 15

2014

Mixed media on paper

19.875 x 16 inches

NE-15-001

25/



Sarah Lucas

Mammerylooloo

2012

Tights, fluff, ceramic toilet

19.25 x 23.625 x 20.125 inches

SL-15-001

26/



Birgit Jürgenssen (1949 - 2003)

*Auf der Suche nach einer
gemeinsamen Linie / Looking for a
Common Line*

1978

Pencil and colored pencil on
handmade paper

7 x 9.6 inches

BJU-15-003

27/



Melvin Edward Nelson (1908 - 1992)

The Whirling World by M.E.N. of
Colton, Ore

c. 1960

Mineral pigment and pen on paper in
artist frame

9 x 11 inches

MN-15-001

28/



Kathy Butterly

Just For Men

2009

Clay, glaze

4.375 x 3.75 x 3.75 inches

KB-15-001

29/



John O'Reilly

Of Cavafy - Workers

2008

Polaroid montage

12.625 x 19.5 inches

JO-15-002

30/



Sam Anderson

Texas

2014

Leather, glass, grape stems, paper,
wood, wire, coconut oil, metal
shavings, chess pieces

36 x 36 x 3 inches

SA-15-001

31/



Kathy Butterly

Mushroom Nirvana

2011

Clay, glaze

5 x 5 x 3.125 inches

KB-15-002

32/



John O'Reilly

Caress

2010

halftone montage

7.375 x 8.25 inches

JO-15-001

33/



Jo Nigoghossian

Waiter

2015

Steel, neon

82 x 91 x 60 inches

JN-15-002

34/



Bill Jensen

Abyss II

2005-06

Oil on linen

36 x 32 inches

BJ-15-001

35/



Jo Nigoghossian

Blue Leaf

2015

Steel, neon

L: 20.5 x 21 x 13 inches

R: 17.5 x 18 x 15 inches

Together: 20.5 x 45 x 15 inches

JN-15-003