

For Immediate Release:

Jakob Kolding
World with Difficulties
22 February – 22 March 2015
83 Grand Street

Team (gallery, inc.) is pleased to announce a show of new work by Berlin-based, Danish artist Jakob Kolding. Entitled *World with Difficulties*, the exhibition will run from 22 February through 22 March 2015. Team is located at 83 Grand Street, between Wooster and Greene. Concurrently, our 47 Wooster Street space will host *Call with Information*, an exhibition of new work by Suzanne McClelland.

Jakob Kolding's work takes public space as its subject: the ramifications of architecture and urban design, the ways in which the controlled environment influences behavior. For this exhibition, he has created an installation made up of life-sized wooden silhouettes of people, the fronts of which feature black-and-white lambda prints, while the backs are left unadorned, displaying the birch grain and structural supports. Highly recognizable modernist imagery is presented in the manner of shooting gallery targets, 19th century dioramas and carnival cutouts. The works are neither purely pictorial nor truly sculptural, and the tension between the expectation and actuality of presentation, between their simultaneous flatness and three-dimensionality, serves to defamiliarize the white cube setting, demanding from the viewer a constant navigation of his own spatial experience.

The figures, by evoking ingrained archetypes both contemporary and mythological, trigger in the viewer an immediate sense of recognition. This legibility points to our cultural tendency to transform human physicality into semiotic indicator, to understand bodies as reflections of character. While their scale and placement suggest actual people, their flatness, lack of color and visible contrivance render them hieroglyphs. Kolding's gesture is theatrical, an efficient pantomime that forgoes interiority for the sake of exterior signs.

Kolding employs strategies of sampling and re-framing; his imagery is for the most part appropriated and collaged, frequently allowing recontextualization to serve as his primary intervening gesture. His visual vocabulary is varied in its influences and reference points – ranging from the isolated figure drawings of Robert Longo, to the artificialist illustrations of Toyen, to the constructivist designs of El Lissitzky. Often times promotion and advertisement provide raw material for the artist's practice; the installation simultaneously exploits and reflects upon the polemical nature of propaganda – its power to politicize space and potential to actualize ideology – in order to interrogate the tendency of the built Capitalist environment to stifle and obliterate individualism.

Kolding has exhibited in museums and galleries internationally. These include The Museum of Contemporary Art, Chicago, IL; The Stedelijk Museum, Amsterdam, The Netherlands; The Frankfurter Kunstverein, Frankfurt, Germany; Fondazione Pastificio Cerere, Rome, Italy; Overgaden-Institut for Samtidskunst, Copenhagen, Denmark; Kunstverein in Hamburg, Germany; CCA Wattis Institute for Contemporary Arts, San Francisco, USA; The Museum of Contemporary Art, San Diego, California; and The University of Michigan Museum of Art, Ann Arbor. He is included in numerous public collections including The Museum of Modern Art in New York.

Gallery hours are Tuesday through Saturday, 10am to 6pm and Sunday, Noon to 6pm. For further information and/or photographs, please call 212 279 9219.

Jakob Kolding

World with Difficulties

22 February – 22 March 2015

Gallery A, from front to back:



JAKOB KOLDING

Twoism, 2015

digital print on birch veneer, steel

95 x 30 x 16 inches; 242 x 77 x 40 cm

72 x 29 x 16 inches; 182 x 74 x 40 cm

unique



JAKOB KOLDING

Fallen Tree, 2015

digital print on birch veneer, steel

28 x 54 x 16 inches; 71 x 137 x 40 cm

17 x 52 x 16 inches; 43 x 131 x 40 cm

unique



JAKOB KOLDING

Theatrical, 2015

digital print on birch veneer, steel

68 x 22 x 16 inches; 172 x 56 x 40 cm

unique



JAKOB KOLDING

The Other Owl, 2015

digital print on birch veneer, steel

41 x 23 x 16 inches; 103 x 58 x 40 cm

unique



JAKOB KOLDING

Check your Head Check your Feet, 2015
digital print on birch veneer, steel
67 x 16 x 16 inches; 174 x 41 x 40 cm
unique



JAKOB KOLDING

Tree, 2015
digital print on birch veneer, steel
95 x 30 x 16 inches; 242 x 77 x 40 cm
unique



JAKOB KOLDING

Untitled (Balancing Act), 2015
digital print on birch veneer, steel
62 x 22 x 16 inches; 158 x 56 x 40 cm
unique



JAKOB KOLDING

The Common Swift That Wanted to be an Eagle, 2015
digital print on birch veneer, steel
75 x 47 x 16 inches; 191 x 120 x 40 cm
unique



JAKOB KOLDING

Untitled (Balancing Act), 2015
digital print on birch veneer, steel
59 x 28 x 16 inches; 149 x 70 x 40 cm
unique



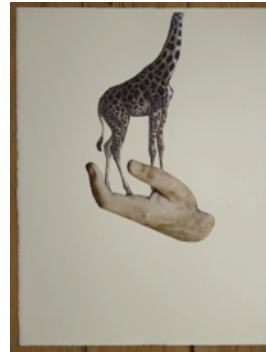
JAKOB KOLDING

Half a Person, 2015
digital print on birch veneer, steel
47 x 17 x 16 inches; 120 x 44 x 40 cm
unique

Gallery B:



JAKOB KOLDING
Nightlife, 2015
collage on paper
30 x 22 inches; 76 x 56 cm
unique



JAKOB KOLDING
The Giraffe Who Suddenly Discovered That Everything is Relative, 2015
collage on paper
30 x 22 inches; 76 x 56 cm
unique



JAKOB KOLDING
Knots, 2015
collage on paper
30 x 22 inches; 76 x 56 cm
unique



JAKOB KOLDING
Bird, 2015
collage on paper
30 x 22 inches; 76 x 56 cm
unique



JAKOB KOLDING
The Trees, 2015
collage on paper
30 x 22 inches; 76 x 56 cm
unique

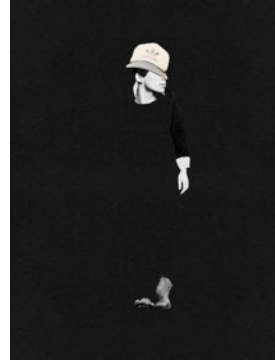


JAKOB KOLDING
Bestiary, 2015
collage on paper
30 x 22 inches; 76 x 56 cm
unique



JAKOB KOLDING

Tangles, 2015
collage on paper
30 x 22 inches; 76 x 56 cm
unique



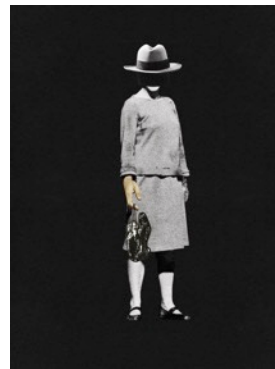
JAKOB KOLDING

Hanging Out, 2015
lambda print
51 x 39 inches; 130 x 99 cm
unique



JAKOB KOLDING

Depressed Eagle, 2015
collage on paper
30 x 22 inches; 76 x 56 cm
unique



JAKOB KOLDING

In Disguise, 2015
lambda print
51 x 39 inches; 130 x 99 cm
unique