

# GLADSTONE GALLERY

## **Claudia Comte**

### ***NO MELON NO LEMON***

530 West 21st Street, New York

January 29 – March 21, 2015

Opening January 28, 6 – 8 pm

*It's a hot summer day in the southern part of Italy. Clouds blow by; the thermostat glows red at its tip. The horizon shakes unevenly, like a bleak, overexposed line. It hurts to focus your eyes on it. In the dryness and the sweltering heat you recognize the objects around you only by their outlines, which repeat themselves beyond your view. NO MELON NO LEMON is the supreme palindrome. It is dry wood in the shape of olive trees, dark burnt earth around them. No citrus fruits, no water vessel in sight—just the echo of the shapes. NO MELON NO LEMON is the repeating sound in your head as you read the same meaning backwards and forwards.*

Gladstone Gallery is pleased to present Claudia Comte's first U.S. solo exhibition. The Swiss artist will create a site-specific environment comprising paintings and chainsaw-cut sculptures. Each work functions as part of a modular system of intricately connected elements. Arranged in a rhythmic, mathematical manner, they become an immersive space where forms repeat in delirious, self-referencing patterns.

Comte's wood sculptures have subtly recognizable forms, simultaneously reminiscent of classical sculptures and cartoon figures. Through their soft curves they take on anthropomorphic qualities that suggest they are actually characters—rebellious protagonists in the middle of a large, organized choir; troublemakers dancing out of line while the music pumps out a rhythmic beat.

Comte's sculptures sit on plinths that appear to have folded out from the walls. Their heights and depths are exaggerated almost to comedic effect: some extend nearly to the ceiling; others are low to the ground and cut through large expanses of the space. The lines that the plinths create are mirrored by additional lines carved into them and by vertical stripes which are painted on the walls and on circular canvases. These painted stripes toy with each other: sometimes matching each other's rhythms, other times bisecting each other at ninety degrees, creating syncopation, and their own sequential system. Repetitions with subtle variations are a leitmotif in Comte's work, which she uses to activate historical references and modern art codes.

The title of the exhibition is a direct response to repetitive gesture. Like the exhibition itself, *NO MELON NO LEMON* can be read backwards and forwards, so that neither the beginning nor the end nor the entry point is apparent. Each element is interconnected and dependent on each other, and each feels as if it could be repeated endlessly. The repetition and intersection of the lines become a pattern—the pattern becomes a grid and the grid becomes a matrix. It is within this matrix that all of the three-dimensional forms are built: organic, abstract sculptures standing in direct confrontation with their linear surroundings. Ultimately, there is harmony: between the wooden panels (left in a raw state, roughly cut and burnt dark), the wall painting (rigid and perfectly executed, bright and glowing), and the sculptures (impure in form and yet meticulously polished).

*It's hot and captivating; it's a volcano waiting to erupt. It's 100 degrees and the ice cream has melted.*

Comte was born in Grancy, Switzerland, and now lives and works in Berlin. She has been the subject of solo exhibitions at Haus Konstruktiv, Zurich, Switzerland; Centre Culturel Suisse, Paris; and the Swiss Institute of Rome, Rome. She has also been included in group exhibitions at Kunsthaus Glarus, Glarus, Switzerland; Aargauer Kunsthaus, Aarau, Switzerland; *Elevation 1049*, Gstaad, Switzerland; and at SALTS, Basel, Switzerland.

### ***Beautiful Monsters***

Curated by Douglas Fogle

515 West 24th Street, New York

January 28 – February 28, 2015

Opening January 28, 6 - 8 pm

### **Paloma Varga Weisz**

*Bois Dormant*

12 Rue du Grand Cerf, Brussels

Through March 6, 2015

For further information, please contact Ariel Hudes at +1 212 206 9300 or [ahudes@gladstonegallery.com](mailto:ahudes@gladstonegallery.com)

New York gallery hours: Tuesday – Saturday, 10am – 6pm

Brussels gallery hours: Tuesday – Friday, 10am – 6pm, Saturday, 12pm – 6pm

# GLADSTONE GALLERY

**CLAUDIA COMTE**

*NO MELON NO LEMON*

530 West 21st Street

January 29 – March 21, 2015

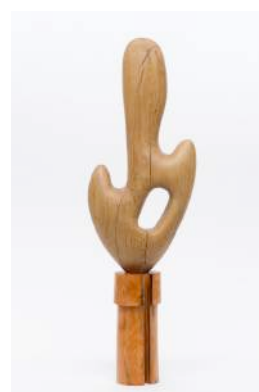
1

Claudia Comte  
*Sculpture Object 26: La Cerise*, 2014  
Cherry Tree with plinth  
13 5/8 x 15 1/2 x 22 1/4 inches (34.6 x 39.4 x 56.5  
cm)  
CC016



2

Claudia Comte  
*Sculpture Object 25*, 2014  
Oak and Pear Tree with plinth  
44 1/4 x 14 7/8 x 6 inches (112.4 x 37.8 x 15.2 cm)  
CC015



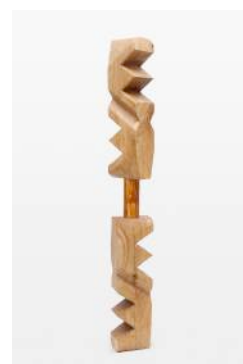
3

Claudia Comte  
*Fluide Glacial, Big Yellow Circle (Cocktail paintings)*, 2014  
Acrylic on canvas  
98 1/2 x 98 1/2 inches (250.2 x 250.2 x 4.4 cm)  
CC005



4

Claudia Comte  
*Sculpture Object 22: Croco on Croco*, 2014  
Oak and Yew Tree with plinth  
79 5/8 x 9 5/8 x 10 1/2 inches (202.2 x 24.4 x 26.7 cm)  
CC012



# GLADSTONE GALLERY

5

Claudia Comte  
*Sculpture Object 29: Demis Cercles*, 2014  
Pear Tree with plinth  
27 7/8 x 30 x 30 1/4 inches (70.8 x 76.2 x 76.8 cm)  
CC019



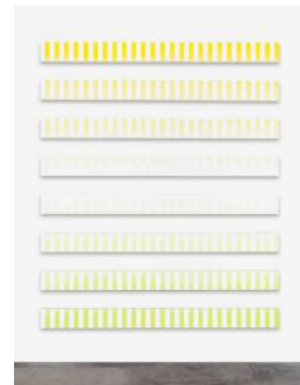
6

Claudia Comte  
*Sculpture Object 23: Loch Ness*, 2014  
Walnut and Amazakoue with plinth  
23 1/2 x 8 1/2 x 20 7/8 inches (59.7 x 21.6 x 53 cm)  
CC013



7

Claudia Comte  
*Fluide Glacial, Stripes B (Cocktail paintings)*, 2014  
Acrylic on canvas  
8 canvases: 7 7/8 x 98 1/2 inches (20 x 250 cm) each  
118 x 98 1/2 inches (299.7 x 250.2 cm) overall  
CC008



8

Claudia Comte  
*Sculpture Object 24*, 2014  
Acacia, oak and yew tree with plinth  
71 5/8 x 10 x 7 inches (181.9 x 25.4 x 17.8 cm)  
CC014



# GLADSTONE GALLERY

9

Claudia Comte  
*Sculpture Object 28*, 2014  
Acacia with plinth  
23 1/4 x 15 x 19 inches (59.1 x 38.1 x 48.3 cm)  
CC018



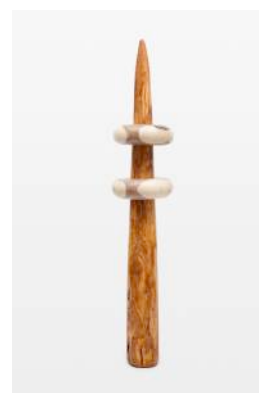
10

Claudia Comte  
*Sculpture Object 30: Le Menhir*, 2014  
Cherry Tree with plinth  
35 x 15 x 11 inches (88.9 x 38.1 x 27.9 cm)  
CC020



11

Claudia Comte  
*Sculpture Object 20: The Woosh*, 2014  
Walnut and Yew Tree with plinth  
82 3/4 x 15 1/2 x 15 1/2 inches (210.8 x 39.4 x 39.4 cm)  
CC010



12

Claudia Comte  
*Sculpture Object 27: The Cheese - Guitare*, 2014  
Acacia with plinth  
24 3/4 x 8 1/2 x 8 3/4 inches (62.9 x 21.6 x 22.2 cm)  
CC017



# GLADSTONE GALLERY

13

Claudia Comte  
*Fluide Glacial, Two small Circles – full gradient (Cocktail paintings), 2014*  
Acrylic on canvas  
Two panels: 44 1/4 x 44 1/4 inches (112.5 x 112.5 cm) each  
118 x 44 1/4 inches (299.7 x 112.5 cm) overall  
CC003



14

Claudia Comte  
*Sculpture Object 32: La Vedette, 2014*  
Oak with plinth  
20 x 37 1/4 x 10 inches (50.8 x 94.6 x 25.4 cm)  
CC022



15

Claudia Comte  
*Sculpture Object 31, 2014*  
Walnut with plinth  
15 x 32 x 4 1/4 inches (38.1 x 81.3 x 10.8 cm)  
CC021



16

Claudia Comte  
*Sculpture Object 34: Donut 2, 2014*  
Oak with plinth  
5 1/4 x 15 x 16 inches (13.3 x 38.1 x 40.6 cm)  
CC024



# GLADSTONE GALLERY

17

Claudia Comte  
*Sculpture Object 33: Donut 1*, 2014  
Oak with plinth  
5 1/4 x 15 x 16 inches (13.3 x 38.1 x 40.6 cm)  
CC023



18

Claudia Comte  
*Sculpture Object 21*, 2014  
Acacia with plinth  
106 x 13 x 8 1/2 inches (269.2 x 33 x 21.6 cm)  
CC011



19

Claudia Comte  
*Fluide Glacial, Stripes A (Cocktail paintings)*, 2014  
Acrylic on canvas  
8 canvases: 7 7/8 x 98 1/2 inches (20 x 250 cm)  
each  
98 1/2 x 118 inches (250.2 x 299.7 cm) overall  
CC007



20

Claudia Comte  
*Fluide Glacial, Wall painting*, 2014  
Acrylic  
Dimensions variable  
CC004

