

**GALERIE NATHALIE OBADIA**

PARIS - BRUXELLES

## Pascal Pinaud

### *Mural Horizon*

22 January - 28 February 2015

Espace II

3, rue du Cloître Saint-Merri - 75004 Paris



PASCAL PINAUD, *UNTITLED (14B11)*, 2014  
AUTOMOBILE LACQUER, SPRAY, ADHESIVE PAPER, SILK ON PAPER  
59,5 X 42 X 3,5 CM (23 3/8 X 16 1/2 X 1 3/8 IN.) FRAMED

Galerie Nathalie Obadia is delighted to present *Horizon Mural* by Pascal Pinaud. Following his last *solo show* in 2012, and the group exhibition *UPSA Dream* which he curated in 2008, it is the artist's fifth collaboration with the gallery.

«The paper works of Pascal Pinaud are a complex universe that throws up a number of questions pertaining to his production as a whole. However, even though the works that Pinaud refers to generically as drawings contribute – in the form of “tests” and “prototypes” – to the conception of large format works, they are no less a body of work that stands alone, like a corpus within a corpus, consisting of the exploration *per se* of the possibilities revealed as the work progresses. Since the winter of 1989–90, Pinaud has produced more than four hundred drawings in some twenty different series. Based on an open outlook, directed from the front, this approach combines consistency with improvisation that goes hand in hand with untrammelled and creative opportunism. “My work evolves with the circumstances that surround it”, Pinaud emphasizes. “It takes its direction from its context, places, events and encounters. I am open to anything and nothing is excluded out of hand”. In addition to the inventiveness that arises from this methodical eclecticism, it is possible to discern a continuing wish in the artist to avoid effects of style and other individual traits. Although his drawings are never preceded by preliminary studies, they nonetheless give rise to new production. Years after they have been executed, some of them inspire new series of works on paper or large paintings. However, Pinaud's fondness for long-term effects and latency in no way affects the manifestation in each of his works of a series of decisions, the sharpness and consistency of which transcend the common idea of deployment to suggest a set of experiences of

confirmed unitary character. In spite of the modest size of their format, his drawings present themselves as completed realities with the power to embody particular situations and reveal – either through continuity or divergence – the conditions of possibility of works to come. In order to define the rules of unity, autonomy, interpretability and diversity that his production methods obey, Pascal Pinaud significantly makes reference to the notion of action. Employing links that exist between his practice and commonplace sensitivity, he evokes the virtues of the principle of reality. Pinaud shows himself to be like an empirical realist, working “in the spirit of abstraction”, to quote an expression dear to his friend Noël Dolla. Even if his works are not completely abstract, the means Pinaud adopts and the configurations that he develops unconcernedly take up the heritage of the forms of abstraction of the past. On the other hand, the conception underlying the resulting drawings shows no special interest in the gifts usually acknowledged in those “who know how to draw”, as, for Pinaud, the paths of referentiality have their origin in a completely different exchange with the visible.

Fabien Faure, an extract from “L'esprit de famille”, to appear in *Pascal Pinaud – Les dessins* (Geneva: Éditions du Mamco, 2015)

---

Presentation and signature of the monograph *Serial Painter* (Geneva, Éditions du Mamco, 2015) by Pascal Pinaud during the Thursday 22nd January opening, from 5pm to 8pm.

---

**Pascal Pinaud was born in Toulouse in 1964. He lives and works in Nice.**

Pascal Pinaud has been granted important solo exhibitions at the Biennale d'Art Contemporain in Bourges (2012), the MAC/VAL in Vitry-sur-Seine (*Plates-Formes*, 2007), at Verrière Hermès in Bruxelles (*Tous les dégoûts sont dans ma nature*, 2007), at FRAC Basse-Normandie in Caen (*White de blanc*, 2006), at Musée d'Art Moderne in Saint-Étienne (*En vert et contre tout*, 2005), at MAMCO in Genève (*Transpainting*, 2001), at Musée d'Art Contemporain in Santiago of Chile (*Pascal Pinaud Peintre*, 1999), at Centre d'Art Contemporain - Le Parvis in Tarbes (*Amicalement vôtre* with Dominique Figarella, 1997), at the Quartier in Quimper (1997), at Centre d'art Contemporain in Castres (*Random*, 1996). His work will be shown at FRAC Bretagne in 2015, and FRAC Provence-Alpes Côte d'Azur and Fondation Maeght in Saint-Paul de Vence in 2016.

Pascal Pinaud recently participated to numerous group shows which have been critical and public successes such as *Avec ou Sans Peinture*, at MAC/VAL in Vitry-sur-Seine (2014), the Busan Biennial in South Korea (2014), *Legs Bergreen* at MAMCO in Nice (2014), *Au-delà du tableau*, at 19 of CRAC Montbéliard (2012), *Une traversée en couleur* at Musée d'Art et d'Histoire de Saint-Brieuc (2012), *Biens Communs I - Acquisitions récentes* at MAMCO of Genève (2011), *De Monet à Wharol* at Daejeon Museum of Art in South Korea (2011), *Nouvel accrochage des collection des années 1960 à nos jours* at Centre Pompidou in Paris (2011), *La Peinture Autrement* at Musée Chagall in Nice (2011), *La peinture après la peinture* at Centre d'Art de Moscou (2010), *Là où je suis n'existe pas* at the Abattoirs in Toulouse (2009). Pinaud was ordered a major public art command for the Nice Côte d'Azur tramway in Nice (with Stéphane Magnin) and then in 2012 for the Paris tramway.

His work prominent in such prestigious public and private collections as the Musée Ludwig (Vienna), the MAMCO (Geneva), the Centre Pompidou - Musée National d'Art Moderne (Paris), the MAC/VAL (Vitry-sur-Seine), the FNAC (Paris), the FRAC Basse-Normandie, the FRAC Auvergne, the FRAC Bretagne, the FRAC Limousin, the FRAC Provence-Alpes Côte d'Azur, the FRAC Alsace, the Musée Picasso of Antibes, the City of Saint-Étienne.

---

**Galerie Nathalie Obadia**  
Bourg-Tibourg

**Jessica Stockholder**  
22 January - 14 March 2015  
Vernissage on the 22 January

**Ink Art**  
1st April - 31st May 2015  
Vernissage on the 1st April

**Galerie Nathalie Obadia**  
Cloître Saint-Merri

**Luc Delahaye**  
13 November - 17 January 2015

**Brenna Youngblood**  
31 January - 28 March  
Vernissage on the 31 January

**Galerie Nathalie Obadia**  
Bruxelles

**Michael DeLucia**  
*La Pomme de Terre du Ciel*  
6 November - 17 January

**Fabrice Hyber**  
4 February - 4 April  
Vernissage on the 4 February

For further information, please contact Maimiti Cazalis  
maimiti.cazalis@galerie-obadia.com — + 33 (0)1 42 74 67 68

Pascal Pinaud  
*Symposium Systems (01B03)*, 2001  
Acrylic, adhesive paper and sandoori sticker on Arches paper  
59,5 x 42 x 3,5 cm (23 3/8 x 16 1/2 x 1 3/8 in.) framed  
signé au dos



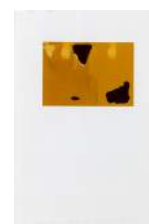
S020008

Pascal Pinaud  
*Test'art*, 1999  
automotiv lacquer on Arches paper  
59,5 x 42 x 3,5 cm (23 3/8 x 16 1/2 x 1 3/8 in.) framed  
signé en bas à droite



S050164 - PP1031

Pascal Pinaud  
*Test'art (04B04)*, 2004  
Automotiv lacquer on Arches paper  
59,5 x 42 x 3,5 cm (23 3/8 x 16 1/2 x 1 3/8 in.) framed  
signé en bas à droite



S050169

Pascal Pinaud  
*Sans Titre (08B12)*, 2008  
Mixed media on Arches paper  
59,5 x 42 x 3,5 cm (23 3/8 x 16 1/2 x 1 3/8 in.) framed



S090057

Pascal Pinaud  
*Sans Titre (09B32)*, 2009  
Mixed media on Arches paper  
59,5 x 42 x 3,5 cm (23 3/8 x 16 1/2 x 1 3/8 in.) framed



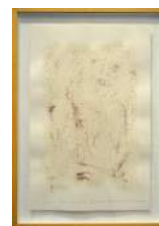
S090060

Pascal Pinaud  
*Sans Titre*, 2008  
Mixed media on Arches paper  
59,5 x 42 x 3,5 cm (23 3/8 x 16 1/2 x 1 3/8 in.) framed



S090061

Pascal Pinaud  
*Sans Titre*, 2004  
Color and gel on Arches paper  
59,5 x 42 x 3,5 cm (23 3/8 x 16 1/2 x 1 3/8 in.) framed



ID2552

Pascal Pinaud  
*Sans Titre (05B01)*, 2005  
Acrylic, varnished adhesive paper, on Arches paper  
32,5 x 50 cm (12 3/4 x 19 5/8 in.)  
59,5 x 42 x 3,5 cm (23 3/8 x 16 1/2 x 1 3/8 in.) framed  
Signé en bas à droite



ID91032

Pascal Pinaud  
*Sans titre (01B01)*, 2001  
Acrylic on Arches paper  
59,5 x 42 x 3,5 cm (23 3/8 x 16 1/2 x 1 3/8 in.) framed  
Daté, signé et titré



ID91269

Pascal Pinaud  
*Pièce bourgeoise (04B01)*, 2004  
Adhesive paper, hair, gel medium on Arches paper  
59,5 x 42 x 3,5 cm (23 3/8 x 16 1/2 x 1 3/8 in.) framed  
Daté, signé et titré



ID91274

Pascal Pinaud  
*Sans titre (09B24)*, Novembre 2009  
Acrylic and adhesive paper on Arches paper  
49,5 x 32 cm (19 1/2 x 12 5/8 in.)  
59,5 x 42 x 3,5 cm (23 3/8 x 16 1/2 x 1 3/8 in.) framed



ID21709

Pascal Pinaud  
*Sans titre (09B23)*, Novembre 2009  
Acrylic and adhesive paper on Arches  
49,5 x 32 cm (19 1/2 x 12 5/8 in.)  
59,5 x 42 x 3,5 cm (23 3/8 x 16 1/2 x 1 3/8 in.) framed



ID21710

Pascal Pinaud  
*Sans titre (09B16)*, Octobre 2009  
Upholstery fabric, adhesive tape, gel medium on Arches paper  
49,5 x 32 cm (19 1/2 x 12 5/8 in.)  
59,5 x 42 x 3,5 cm (23 3/8 x 16 1/2 x 1 3/8 in.) framed



ID21711

Pascal Pinaud  
*Sans titre (13B11)*, 2013  
Printed canvas, oil painting on Arches paper  
59,5 x 42 x 3,5 cm (23 3/8 x 16 1/2 x 1 3/8 in.) framed



ID26165

Pascal Pinaud  
*Sans titre (13B12)*, 2013  
Canvas color, adhesive paper, cardboard on Arches paper  
59,5 x 42 x 3,5 cm (23 3/8 x 16 1/2 x 1 3/8 in.) framed



ID26166

Pascal Pinaud  
*Sans titre (13B13)*, 2013  
Painting on canvas, boss clothing on Arches paper  
59,5 x 42 x 3,5 cm (23 3/8 x 16 1/2 x 1 3/8 in.) framed



ID26168

Pascal Pinaud  
*Sans titre (13B15)*, 2013  
Automobile lacquer on paper, adhesive on Arches paper  
59,5 x 42 x 3,5 cm (23 3/8 x 16 1/2 x 1 3/8 in.) framed



ID26170

Pascal Pinaud  
*Sans titre (13B16)*, 2013  
Felt, silk, acrylic on Arches paper  
59,5 x 42 x 3,5 cm (23 3/8 x 16 1/2 x 1 3/8 in.) framed



ID26171

Pascal Pinaud  
*Sans titre (13B17)*, 2013  
Adhesive paper, ink, paper bag on Arches paper  
59,5 x 42 x 3,5 cm (23 3/8 x 16 1/2 x 1 3/8 in.) framed



ID26172

Pascal Pinaud  
*Sans titre (14B01)*, 2014  
Acrylic on canvas, gel on Arches paper  
59,5 x 42 x 3,5 cm (23 3/8 x 16 1/2 x 1 3/8 in.) framed



ID26173

Pascal Pinaud  
*Sans titre (14B02)*, 2014  
Adhesive paper, automobile lacquer on Arches paper  
59,5 x 42 x 3,5 cm (23 3/8 x 16 1/2 x 1 3/8 in.) framed



ID26174

Pascal Pinaud  
*Sans titre (14B03)*, 2014  
Paint on silk, strass, felt on Arches paper  
59,5 x 42 x 3,5 cm (23 3/8 x 16 1/2 x 1 3/8 in.) framed



ID26175

Pascal Pinaud  
*Sans titre (14B04)*, 2014  
Adhesive paper, printed image on Arches paper  
59,5 x 42 x 3,5 cm (23 3/8 x 16 1/2 x 1 3/8 in.) framed



ID26176

Pascal Pinaud  
*Sans titre (14B05)*, 2014  
Adhesive paper, spray paint, gel on Arches paper  
59,5 x 42 x 3,5 cm (23 3/8 x 16 1/2 x 1 3/8 in.) framed



ID26177

Pascal Pinaud  
*Sans titre (14B06)*, 2014  
Adhesive paper, printed image on Arches paper  
59,5 x 42 x 3,5 cm (23 3/8 x 16 1/2 x 1 3/8 in.) framed



ID26178

Pascal Pinaud  
*Sans titre (14B07)*, 2014  
Automobile paint, adhesive paper, plastic on Arches paper  
59,5 x 42 x 3,5 cm (23 3/8 x 16 1/2 x 1 3/8 in.) framed



ID26179

Pascal Pinaud  
*Sans titre (14B08)*, 2014  
Acrylic, spray paint, cotton on Arches paper  
59,5 x 42 x 3,5 cm (23 3/8 x 16 1/2 x 1 3/8 in.) framed



ID26180

Pascal Pinaud  
*Sans titre (14B09)*, 2014  
Automobile lacquer, adhesive paper, glitter on Arches paper  
59,5 x 42 x 3,5 cm (23 3/8 x 16 1/2 x 1 3/8 in.) framed



ID26181

Pascal Pinaud  
*Sans titre (14B10)*, 2014  
Spray paint, carton, dust on Arches paper  
59,5 x 42 x 3,5 cm (23 3/8 x 16 1/2 x 1 3/8 in.) framed



ID26182

Pascal Pinaud  
*Sans titre (14B11)*, 2014  
Automobile paint, spray, adhesive paper, silk on paper  
59,5 x 42 x 3,5 cm (23 3/8 x 16 1/2 x 1 3/8 in.) framed



ID26183

Pascal Pinaud  
*Sans titre (14B12)*, 2014  
Automobile lacquer, inkjet on paper Arches  
59,5 x 42 x 3,5 cm (23 3/8 x 16 1/2 x 1 3/8 in.) framed



ID26184

Pascal Pinaud  
*Sans titre (14B13)*, 2014  
Automobile paint, gel on Arches paper  
59,5 x 42 x 3,5 cm (23 3/8 x 16 1/2 x 1 3/8 in.) framed



ID26397

Pascal Pinaud  
*Sans titre (14B14)*, 2014  
Adhesive, automobile paint, satin print on Arches paper  
59,5 x 42 x 3,5 cm (23 3/8 x 16 1/2 x 1 3/8 in.) framed



ID26398

Pascal Pinaud  
*Sans titre (14B15)*, 2014  
Automobile paint, gel on Arches paper  
59,5 x 42 x 3,5 cm (23 3/8 x 16 1/2 x 1 3/8 in.) framed



ID26400

Pascal Pinaud  
*Les déchirures (14B16)*, 2014  
Automobile paint, gel on Arches paper  
59,5 x 42 x 3,5 cm (23 3/8 x 16 1/2 x 1 3/8 in.) framed



ID26401

Pascal Pinaud  
*Les déchirures (14B18)*, 2014  
Automobile paint, gel on Arches paper  
59,5 x 42 x 3,5 cm (23 3/8 x 16 1/2 x 1 3/8 in.) framed



ID26403

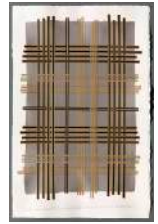


Pascal Pinaud  
*Le K (14B19)*, 2014  
Adhesive paper, cotton on Arches paper  
59,5 x 42 x 3,5 cm (23 3/8 x 16 1/2 x 1 3/8 in.) framed



ID26404

Pascal Pinaud  
*Motif écossais (14B20)*, 2014  
Adhesive paper, gel on Arches paper  
59,5 x 42 x 3,5 cm (23 3/8 x 16 1/2 x 1 3/8 in.) framed



ID26405

Pascal Pinaud  
*Horizon mural (14B21)*, 2014  
Spray paint, adhesive paper, gel on Arches paper  
59,5 x 42 x 3,5 cm (23 3/8 x 16 1/2 x 1 3/8 in.) framed



ID26406

Pascal Pinaud  
*Sans titre (14B22)*, 2014  
Chinese ink, adhesive paper, automobile paint, gel on Arches paper  
59,5 x 42 x 3,5 cm (23 3/8 x 16 1/2 x 1 3/8 in.) framed



ID26407

Pascal Pinaud  
*Sans titre (14B23)*, 2014  
Automobile paint, adhesive paper, gel on Arches paper  
59,5 x 42 x 3,5 cm (23 3/8 x 16 1/2 x 1 3/8 in.) framed



ID26408

Pascal Pinaud  
*O.Q.P. (14B25)*, 2014  
Automobile paint, adhesive paper, spray on Arches paper  
59,5 x 42 x 3,5 cm (23 3/8 x 16 1/2 x 1 3/8 in.) framed



ID26410

Pascal Pinaud  
*Paysage figuratif (14B36)*, 2014  
Automobile lacquer, adhesive paper on Arches paper  
59,5 x 42 x 3,5 cm (23 3/8 x 16 1/2 x 1 3/8 in.) framed



ID26413

Pascal Pinaud  
*Espace abstrait (14B30)*, 2014  
Adhesive paper, gel on Arches paper  
59,5 x 42 x 3,5 cm (23 3/8 x 16 1/2 x 1 3/8 in.) framed



ID26414

Pascal Pinaud  
*Décolor (14B29)*, 2014  
Anti-fading wipes on Arches paper  
59,5 x 42 x 3,5 cm (23 3/8 x 16 1/2 x 1 3/8 in.) framed



ID26415

Pascal Pinaud  
*Décolor (14B28)*, 2014  
Anti-fading wipes on Arches paper  
59,5 x 42 x 3,5 cm (23 3/8 x 16 1/2 x 1 3/8 in.) framed



ID26416

Pascal Pinaud  
*Sans titre (14B34)*, 2014  
Chinese ink, adhesive paper, digital print on Arches paper  
59,5 x 42 x 3,5 cm (23 3/8 x 16 1/2 x 1 3/8 in.) framed



ID26417

Pascal Pinaud  
*Monochrome à mites (14B27)*, 2014  
Moth, rosin, gel on Arches paper  
59,5 x 42 x 3,5 cm (23 3/8 x 16 1/2 x 1 3/8 in.) framed



ID26418

Pascal Pinaud  
*Collection (14B35)*, 2014  
Badges, automobile lacquer on Arches paper  
59,5 x 42 x 3,5 cm (23 3/8 x 16 1/2 x 1 3/8 in.) framed



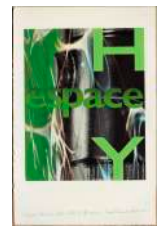
ID26420

Pascal Pinaud  
*Paysage composite (14B38)*, 2014  
Adhesive paper, acrylic, fabric printed on Arches paper  
59,5 x 42 x 3,5 cm (23 3/8 x 16 1/2 x 1 3/8 in.) framed



ID26421

Pascal Pinaud  
*Espace abstrait (14B31)*, 2014  
Adhesive paper, gel on Arches paper  
59,5 x 42 x 3,5 cm (23 3/8 x 16 1/2 x 1 3/8 in.) framed



ID26422

Pascal Pinaud  
*Beau et laid (14B32)*, 2014  
Adhesive paper, digital print, gel on Arches paper  
59,5 x 42 x 3,5 cm (23 3/8 x 16 1/2 x 1 3/8 in.) framed



ID26423

Pascal Pinaud  
*Beau et laid (14B33)*, 2014  
Adhesive paper, automobile lacquer, gel on Arches paper  
59,5 x 42 x 3,5 cm (23 3/8 x 16 1/2 x 1 3/8 in.) framed



ID26424

Pascal Pinaud  
*Décolor (09B12)*, 2009  
Anti-fading wipes on Arches paper  
59,5 x 42 x 3,5 cm (23 3/8 x 16 1/2 x 1 3/8 in.) framed



ID26581

Pascal Pinaud  
*Sans titre (10B26)*, 2010  
Acrylic, adhesive paper, paint spray on Arches paper  
59,5 x 42 x 3,5 cm (23 3/8 x 16 1/2 x 1 3/8 in.) framed



ID26584

Pascal Pinaud  
*Sans titre (10B30)*, 2010  
Fabric on Arches paper, felt pen  
59,5 x 42 x 3,5 cm (23 3/8 x 16 1/2 x 1 3/8 in.) framed



ID26585

Pascal Pinaud  
*Sans titre (11B08)*, 2011  
Pencil on Arches paper  
59,5 x 42 x 3,5 cm (23 3/8 x 16 1/2 x 1 3/8 in.) framed



ID26586

Pascal Pinaud  
*Sans titre (12B04)*, 2012  
Acrylic paint, adhesive paper on Arches paper  
59,5 x 42 x 3,5 cm (23 3/8 x 16 1/2 x 1 3/8 in.) framed



ID26587

Pascal Pinaud  
*Sans titre (12B05)*, 2012  
Automobile paint, stickers on Arches paper  
59,5 x 42 x 3,5 cm (23 3/8 x 16 1/2 x 1 3/8 in.) framed



ID26588

Pascal Pinaud  
*Sans titre (13B07)*, 2013  
Automobile paint, adhesive paper on Arches paper  
59,5 x 42 x 3,5 cm (23 3/8 x 16 1/2 x 1 3/8 in.) framed



ID26590

Pascal Pinaud  
*Sans titre (13B08)*, 2013  
Automobile paint, adhesive paper on Arches paper  
59,5 x 42 x 3,5 cm (23 3/8 x 16 1/2 x 1 3/8 in.) framed



ID26592

Pascal Pinaud  
*Sans titre (13B09)*, 2013  
Adhesive paper, acrylic, postcard on Arches paper  
59,5 x 42 x 3,5 cm (23 3/8 x 16 1/2 x 1 3/8 in.) framed



ID26593

Pascal Pinaud  
*Sans titre (12B02)*, 2012  
Acrylic, spray paint, metal on Arches paper  
59, x 42 x 3,5 cm (23 1/4 x 16 1/2 x 1 3/8 in.) framed



ID26598

Pascal Pinaud  
*Décolor (14B37)*, 2014  
Anti-fading wiped on Arches paper  
59,5 x 42 x 3,5 cm (23 3/8 x 16 1/2 x 1 3/8 in.) framed



ID26599