

DRAWN

June 28-July 26, 2014

DRAWN brings together artists of different generations and sensibilities working—in the broadest sense—with the medium of drawing.

The title of the exhibition is not only meant to describe an approach but echoes our ongoing fascination with this straight-forward and somewhat humble mode of expression to capture complex thoughts, observations or processes.

Josef Albers (*1888 in Bottrop, died 1976 in New Haven CT)

Mirosław Bałka (*1958 in Warsaw)

Ann Böttcher (*1973 in Bruzaholm)

Jean-Baptiste Bouvet (*1980 in Caen)

Spencer Finch (*1962 in New Haven CT)

Hreinn Friðfinnsson (*1943 in Dölum)

Kristján Gudmundsson (*1941 in Snæfellsnes)

Helen Mirra (*1970 in Rochester RI)

Marjetica Potrč (*1953 in Ljubljana)

Lucas Reiner (*1960 in Los Angeles)

Richard Tuttle (*1941 in Rahway)

Alan Uglow (*1941 in Luton, died 2011 in New York)

Not Vital (*1948 in Sent)

Stanley Whitney (*1946 in Philadelphia PA)

DRAWN - Summer exhibition
June 27, 2014 – July 26, 2014



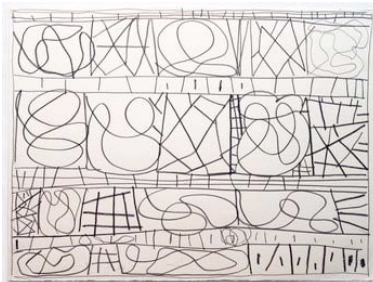
Lucas Reiner
Via Giribaldi
2014
Watercolour on paper
24.7 x 21.2 cm
LR/D 5



Lucas Reiner
Largo Argentina
2014
Watercolour on paper
25 x 20.5 cm
LR/D 1



Marjetica Potrč
The Story of the Ubuntu Park
2014
Ink on paper
Series of 10 drawings, each 29.7 x 21 cm
framed 36.7 x 28 cm
MP/D 68



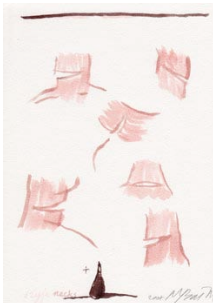
Stanley Whitney
Untitled
2013
Graphite on paper
56 x 76 cm
SW/D 1



Jean-Baptiste Bouvet
Untitled
2010
Burned paper, spray paint
181,5 x 84 cm
JB/M 2



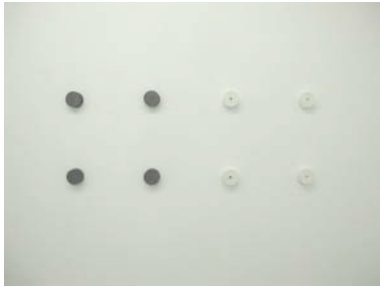
Mirosław Bałka
Milkontracks
2008
Gouache on paper
21 x 14,7 cm, framed 38 x 30 cm
MB/D 30



Mirosław Bałka
Szyje necks
2007
Gouache on paper
21 x 14,7 cm, framed 38 x 30 cm
MB/D 24



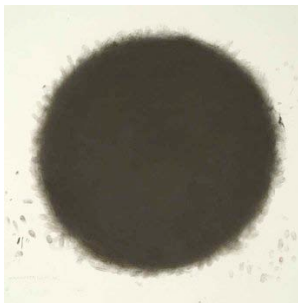
Mirosław Bałka
The Bench
2008
Gouache on paper
21 x 14,7 cm, framed 38 x 30 cm
MB/D 31



Kristjan Gudmundsson
Drawing 23
1989
Paper, graphite
4 parts, each 12 x 6m
KGU/M 1



Alan Uglow
Untitled
1980
Ink on paper
57 x 41 cm
AU/D 1



Spencer Finch
Darkness (Lascaux Interior, North View Upper, September 29, 2005)
2005
Pastel on paper
76.2 x 76.2 cm
SF/D 113



Not Vital
Snow
1998
Drawing and collage on paper
43 x 35.5 cm
NV/D 5



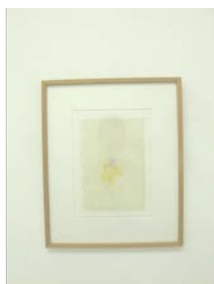
Not Vital
Exhaustion
1998
Drawing and collage on paper
43 x 35.5 cm
NV/D 2



Not Vital
Deer
1998
Drawing and collage on paper
43 x 35.5 cm
NV/D 3



Ann Böttcher
Untitled - Diptych
2014
Pencil on paper with oak frame
2 drawings, each 28 x 38 cm (68 x 94 cm framed)
AB/D 21



Richard Tuttle
1, Ville de Paris
1986
Aquarell und Bleistift auf Papier
23 x 16.4 cm
RT/D 2



Richard Tuttle
Untitled
1988
Mixed media on paper
21.5 x 21 cm
RT/D 1



Hreinn Friðfinnsson
From Mont St. Victoire
1998
Rubbing mounted in silver frame
41.5 x 31 cm
HF/D 4



Helen Mirra
Hourly directional field recordings, Aquacheta, 5 May 2011
2011
oil on linen
155 x 155 cm
HM/P 11



Josef Albers
Structural Constellation
1950
Ink and pencil on paper
45,5 x 58 cm
JAL/D 1