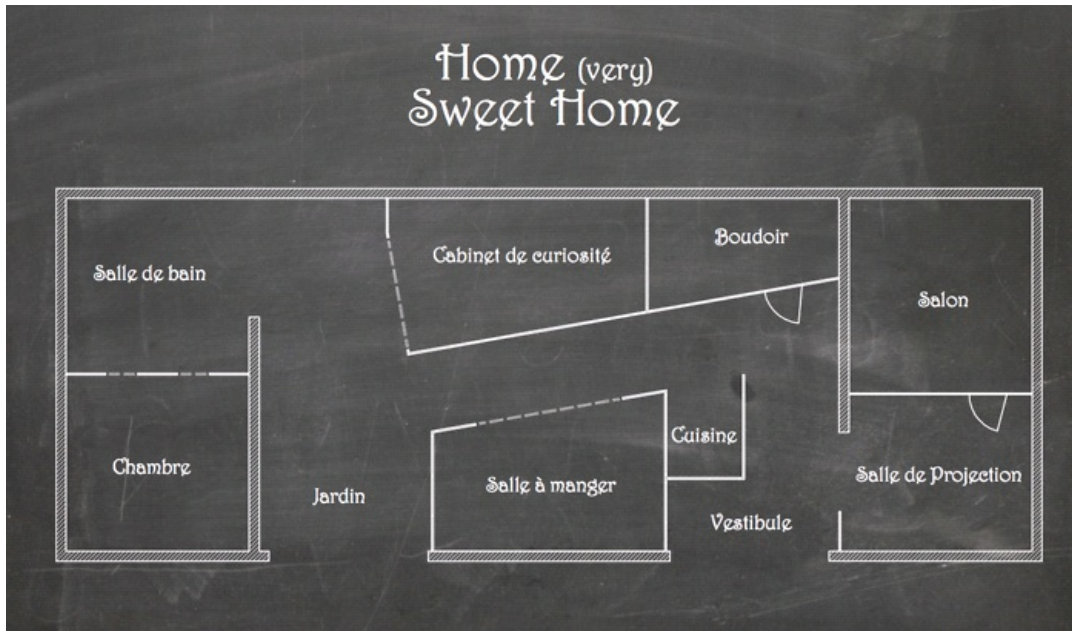


## GROUP

### HOME (VERY) SWEET HOME

PARIS PANTIN

20 May 2014 - 26 Jul 2014



#### An apartment in which Art and Design room together

Curators: Alexandra Midal and Matthieu Lelièvre

#### For Ddays, press visit on Friday 23 May from 2pm to 6pm

Opening on the same day from 6pm to 11pm

Gallery open Saturday 24 (10am-7pm) and Sunday 25 (12pm-7pm)

*"The Marquis, who had seen how touched she already was by the beauties in the living room, had finer things to show her and trusted she would be touched even more by more touching objects. He took care not to prevent her from hastening to her destiny."*

- Jean-François de Bastide, *The Little House*, 1758

With the exhibition *HOME (very) SWEET HOME*, Galerie Thaddaeus Ropac has imagined an apartment in which works of art and objects of decorative art are used to stimulate the spectators' senses, their emotions, and their mood. The visitor reproduces the movements of the seducer in *La Petite Maison* (The Little House), a 1758 novella by Jean-François de Bastide in which a libertine wagers that he can seduce a woman simply by exposing her to the beauties of his little house. As the story unfolds, the reader is shown the gradual effect that the aesthetics of the house have on the sensual desires of the two protagonists.

To share space with material or ethereal artworks and objects sublimates qualities associated with the body, the senses and the emotions. Our perception of our surroundings is modified by a psycho-sensitive vibration that corresponds to the notion of 'sensuous architecture' put forward by Condillac in his *Treatise on the Sensations* (1754) and by Nicolas Le Camus de Mézières in his book *The Genius of Architecture or The Analogy of that Art with our Sensations* (1780). "Let illusion reign supreme", Le Camus de Mézières writes, echoing de Bastide's *La Petite Maison*, where sensuous architecture is cast in the leading role.

The "affectations" refer to a spatial conception that emphasises emotional states and underlines a sensuous quality in design and art capable of arousing powerful emotions. In this domestic journey, where the frontiers between the personal sphere, topography, and mental landscape become blurred, visitors are invited to imagine the transformations in their identity and behaviour that are brought about by entering into dialogue with the works.

In *La Petite Maison*, it was the architect Jacques-François Blondel who made use of libertinage to make architecture and the decorative arts part of the social habits and the morals of his time. In the same spirit, *HOME (very) SWEET HOME* sets out to establish a dialogue between artists and designers. The works act as a seductive accompaniment to each visitor, whether they are hunter or prey. It is a sensual and intellectual adventure involving both the body and the soul.

Who knows if the combination of design and art can act as an instrument of amorous persuasion?

#### List of artists and designers presented (*in progress*):

Atelier Bow-Wow, Stephan Balkenhol, Benjamin Ben Kemoun, Philippe Bradshaw, Catherine Brand, Pierre Chareau, Nitzan Cohen, Tony Cragg, Timothé Deschamps, Marc Duplantier, Elger Esser, El Ultimo Grito, Sylvie Fleury, Maurizio Galante & Tal Lancman, Paolo Gnazzo, Benjamin Graindorge, Konstantin Grcic, Alex Katz, Robert Mapplethorpe, Jason Martin, Normal Studio, Jack Pierson, Eugène Printz, Raoul Raba, Cedric Ragot, Felipe Ribon, Laure Rogemond, Martha Rosler, Moritz Schmid, Camille Scherrer, Floris Schoonderbeek, Gaëtan Stierlin, Sturtevant, Not Vital, Andy Warhol...

Partners: Baccarat, Collection XXO, TAI PING, HEAD — Geneva

With the collaboration of Galerie Dutko, Galerie Ymer & Malta

# GALERIE THADDAEUS ROPAC



**Baccarat**  
*1 carafe Harcourt Abysse*  
HV 1002



**Baccarat**  
*2 Gobelets Etna*  
HV 1005



**Baccarat**  
*2 verres Eve Harcourt (eau)*  
HV 1000



**Baccarat**  
*2 verres Eve Harcourt (vin)*  
HV 1001



**Baccarat**  
*Flacon à Whisky Etna*  
HV 1004



**Stephan Balkenhol**

*Augenkreuz*, 2012  
Wawawood painted  
400 x 400 cm (157.48 x 157.48  
in)  
SB 1225

**Bow-Wow**

*ID cutlery*  
HV 1025



**Philippe Bradshaw**

*Pulp (after Hokusai)*, 2004/05  
Anodised aluminium chains  
333 x 355 cm (131.1 x 139.76  
in)  
Ed. 2/3  
PBR 2057.2



**Andrea Branzi**

*Chaises Luebekkan* édité par  
*Cassina*, 1980  
44 x 90 x 43 cm (17.32 x 35.43  
x 16.93 in)  
HV 1038



**Pierre Chareau**

*Lit de jour*, 1923  
Wood  
207 x 85 x 50 cm (81.5 x 33.46  
x 19.69 in)  
HV 1031



**Cogolin**

*Craquelure*  
soie  
200 x 300 cm (78.74 x 118.11  
in)  
HV 1007



**Cogolin**

*Trou de Serrure*  
soie  
HV 1008

**Nitzan Cohen**

*Coucoucloc*  
HV 1019



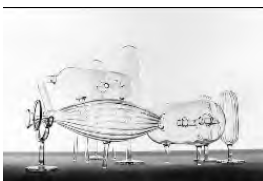
**Tony Cragg**  
*4 p.m.*, 2010  
Steel, 390 kg  
75 x 42 x 42 cm (29.53 x 16.54  
x 16.54 in)  
Version 3  
TC 2818



**Marc Duplantier**  
*lampe, 40's*  
wood  
153 cm (60.24 in)  
HV 1030



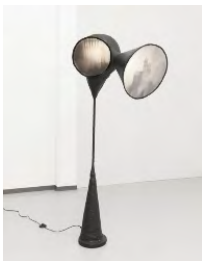
**El Ultimo Grito**  
*1 Free Range (Table)*  
75 x 308 x 125 cm (29.53 x  
121.26 x 49.21 in)  
HV 1011



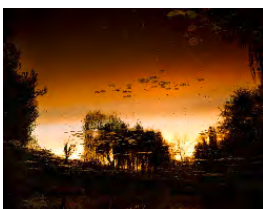
**El Ultimo Grito**  
*Female*  
Verre  
6 pièces : 35 x 55 x 55 cm  
(13.78 x 21.65 x 21.65 in)  
HV 1013



**El Ultimo Grito**  
*Male*  
Verre  
6 pièces : 35 x 65 x 55 cm  
(13.78 x 25.59 x 21.65 in)  
HV 1014



**El Ultimo Grito**  
*Peep Show*  
1 lamp  
180 x 80 x 100 cm (70.87 x  
31.5 x 39.37 in)  
HV 1012



**Elger Esser**  
*Giverny VII, Frankreich*, 2010  
C-print, Aludibond/Forex  
184 x 233.4 x 4 cm (72.44 x  
91.89 x 1.57 in)  
Ed. 4/7+2AP  
EE 1169



**Sylvie Fleury**

*ALAIA Shoes*, 2003

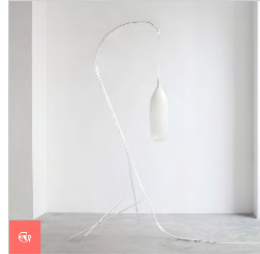
Bronze

Shoes each 17 x 23 x 7 cm

(6.69 x 9.06 x 2.76 in)

Ed. 3/3

SF 1022



**Benjamin Graindorge**

*Cristal Cane*

Luminaire, tube de verre borosilicate extra-blanc, verre soufflé à la canne

166 x 75 x 76.6 cm (65.35 x

29.53 x 30.16 in)

HV 1022



**Benjamin Graindorge**

*Cristal Cane*

Luminaire, tube de verre borosilicate, verre soufflé à la canne

50.6 x 33 x 63.5 cm (19.92 x

12.99 x 25 in)

HV 1023



**Benjamin Graindorge**

*MorningMist*

4 sculptures lumineuses. Bille de verre extra Blanc, piètement en acier laqué blanc brillant

30 x 20 x 50 cm (11.81 x 7.87 x

19.69 in)

HV 1020



**Benjamin Graindorge**

*Sweet Horizon*

Porte cartes en marbre de carrare

5.5 x 24.7 x 60 cm (2.17 x 9.72

x 23.62 in)

HV 1021



**Benjamin Graindorge**

*Vase Ikebana Medula*

Céramic

27 x 38 x 76 cm (10.63 x 14.96

x 29.92 in)

HV 1024



**Konstantin Grcic**

*Canapé ODIN*

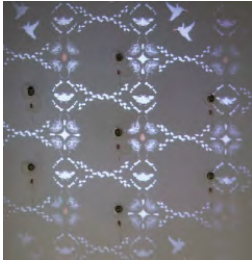
Canapé deux places. Structure interne en tube d'acier avec sangles en caoutchouc.

Rembouillage en polyuréthane avec ouate de polyester.

74 x 140 x 70 cm (29.13 x

55.12 x 27.56 in)

HV 1017



**HEAD**

*Papier peint interactif*

HV 1026



**Alex Katz**

*Cherry Blossoms, 2012*

Oil on linen

121.9 x 167.6 cm (48 x 66 in)

AKZ 1524

05021201



**Alex Katz**

*Red Roses with Blue, 2001*

Oil on canvas

73.7 x 101.6 cm (29 x 40 in)

AKZ 1176



**Robert Mapplethorpe**

*Daisy, 1979*

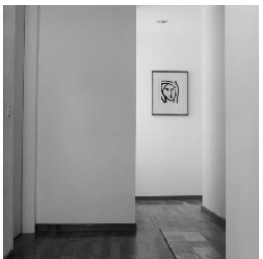
Silver print

40.6 x 50.8 cm (16 x 20 in)

Ed. 4/10

RMP 2321

MAP 334



**Robert Mapplethorpe**

*Interior, 1983*

Silver gelatin print

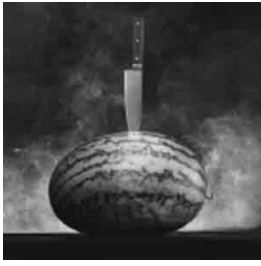
40.6 x 50.8 cm (16 x 20 in)

Framed 61 x 58.5 x 3.2 cm

Ed. 6/10

RMP 1328

MAP 1309



**Robert Mapplethorpe**  
*Watermelon with Knife*, 1985  
Platinum  
66 x 55.9 cm (26 x 22 in)  
AP 1/1  
RMP 1361  
MAP P1556



**Jason Martin**  
*Angelico I*, 2007  
Oil on Aluminium  
187 x 157 cm (73.62 x 61.81 in)  
JMA 2585



**Mathias**  
*Mille Nuits Candélabre*, 2001  
crystal  
70 x 51 cm (27.56 x 20.08 in)  
HV 1003



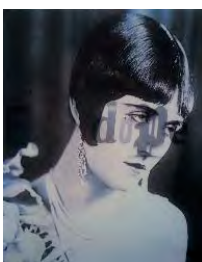
**Alexandra Midal**  
*Domestic Psycho*  
Video, 12 min  
HV 1037



**Schmid Moritz**  
*Albedo, ed Glassworks*, 2011  
glass, wool felt, light source  
LED  
40 cm (15.75 in)  
46 cm diametre  
HV 1027



**Jack Pierson**  
*Cry*, 2010  
Photograph  
36 x 27.8 cm (14.17 x 10.94 in)  
Ed. 1/3  
JP 2146



**Jack Pierson**  
*Pola Negri - Dope*, 2010  
Photograph  
36 x 27.8 cm (14.17 x 10.94 in)  
Ed. 1/3  
JP 2149



**Jack Pierson**

*Provincetown*

*portfolio image n°4, 2003*

photograph on Fujiflex super  
gloss crystal archive paper

61 x 52 cm (24.02 x 20.47 in)

JP 2123



**Eugène Printz**

*2 Étagères de la Cité*

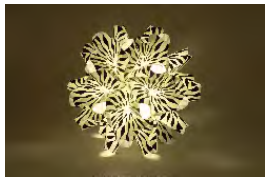
*Internationale Universitaire*

wood, Mahogany

120 x 136 x 29 cm (47.24 x

53.54 x 11.42 in)

HV 1032



**Raoul Raba**

*Lampe Diatome, 1968*

47 x 47 x 47 cm (18.5 x 18.5 x

18.5 in)

HV 1041



**Raoul Raba**

*Lampe None, édité par Cobam,*

1970

28 x 39 x 57 cm (11.02 x 15.35

x 22.44 in)

HV 1039



**Raoul Raba**

*Lampe prototype, 1979*

55 x 50 x 55 cm (21.65 x 19.69

x 21.65 in)

HV 1040



**Cedric Ragot**

*Amibes 2 chaises, 2 tabourets,*

2007

Fiberglass and lacquered

polyester resin

Chaise : 80 x 64 x 61 cm (31.5

x 25.2 x 24.02 in)

Tabouret : 53 x 46 x 46 cm

(20.87 x 18.11 x 18.11 in)

HV 1042



**Felipe Ribon**

*12 Rorschach*

Laque sur papier

HV 1010





### **Floris Schoonderbeek**

*Dutchtub®*

Glass Fibre Polyester, Stainless Steel 316

84 x 170 x 260 cm (33.07 x 66.93 x 102.36 in)

HV 1029



### **Normal Studio**

*Basalt*

Ensemble de 5 tables basses en chêne massif

51.2 x 42.1 cm (20.16 x 16.57 in)

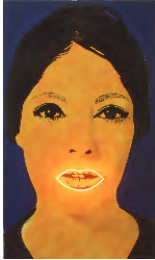
53 x 45.1 cm (20.87 x 17.76 in)

51.7 x 53.9 cm (20.35 x 21.22 in)

49.1 x 47 cm (19.33 x 18.5 in)

56.8 x 38.1 cm (22.36 x 15 in)

HV 1033



### **Sturtevant**

*Peinture à Haute Tension after Martial Raysse, 1969*

Oil on canvas

162 x 96.5 cm (63.78 x 37.99 in)

ST 1018



### **Maurizio Galante & Tal**

**Lancman**

*GRAND ANTIQUE edited by Tai Ping, 2011*

Silk, wool, lurex. Hand made sculpted carpet. Carrara marble motif

HV 1034



### **Maurizio Galante & Tal**

**Lancman**

*Louis XV goes to Sparta edited by Baleri, 2011*

Wood, digitally printed fabric

HV 1035



### **Paolo Gnazzo & Timothé**

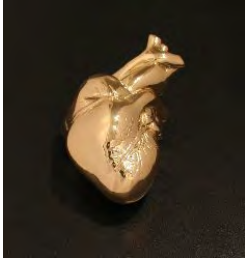
**Deschamps**

*Architectures de l'écoute*

Boules à neige. Aluminium, verre, résine

10 x 10 x 13 cm (3.94 x 3.94 x 5.12 in)

HV 1036



**Not Vital**

*Heart*, 2007

Bronze

6 x 11 x 9 cm (2.36 x 4.33 x 3.54 in)

Ed. 16/25

NV 1028.16



**Andy Warhol**

*Flash - November 22, 1963*, 1968

Screenprint on cream-colored paper (coated)

21 x 21 in (53.3 x 53.3 cm)

AW 2302

PT 033 H UT 004



**Andy Warhol**

*Querelle*, c. 1982

Graphite in HMP paper

80.3 x 60.3 cm (31.62 x 23.75 in)

AW 1216

TOP 93.006



**Andy Warhol**

*Querelle*, c. 1982

Graphite in HMP paper

60.3 x 80.6 cm (23.75 x 31.75 in)

AW 1217

TOP 93.007



**ZZ**

*Wiener Sitzmöbel*

Holzrahmen, schwarz lackiert,  
Leinenbezug

Bank 131 x 48 x 77 cm

Stühle jeweils 58 x 46 x 77 cm

ZZ 1169