

METRO PICTURES

Robert Longo *Gang of Cosmos*

April 10 - May 23, 2014

Opening reception Thursday, April 28, 6 - 8 PM



After de Kooning (Woman and Bicycle, 1952-1953),
2013. Charcoal on mounted paper, 90 x 57 5/8 in
(228.6 x 146.4 cm).

“Gang of Cosmos” an exhibition by Robert Longo at Metro Pictures includes twelve charcoal drawings of well-known Abstract Expressionist paintings. In entering into this dialogue with major figures of 50 years ago, Longo acknowledges Abstract Expressionism’s undiminished importance in American art and its influence on his own thinking. This thoroughly studied and finely executed body of work represents Longo’s most personal engagement with his subject and the revelatory process of executing the drawings in minute detail.

Longo studied the actual paintings in museum collections and worked from photographs that he digitally manipulated to take on the challenge of drawing a painting, representing the overall picture and translating the three-dimensional detail of the physical paint and the color into black-and-white. Rendered in charcoal, the original artworks are immediately recognizable, but it is the overlooked or imperceptible details of the complex surface, the tactility of the paint, the brushstrokes, and the pattern of the canvas that Longo has made visible. Exploring his own ambivalence toward painting, Longo’s drawings address the historical magnitude of Abstract Expressionism in art historical and cultural contexts—the shift in political and cultural dominance from Europe to the United States in the years following the Second World War—as well as the fundamental differences between the execution and behavior of painting and Longo’s own intensive and acutely rendered drawings. Represented are Willem de Kooning, Helen Frankenthaler, Lee Krasner, Norman Lewis, Joan Mitchell, Robert Motherwell, Barnett Newman, Jackson Pollock, Ad Reinhardt, Mark Rothko and Clyfford Still.

A concurrent exhibition, “Strike the Sun,” by Robert Longo at Petzel Gallery looks at the U.S. Capitol building and the American flag, two highly polarizing national symbols that stand in counterpoint to new aggression of the Abstract Expressionist paintings and their exploitation for international propaganda. In Longo’s enormous seven-panel drawing, the immutable monumentality of the Capitol image is particularized by subtle variations in the molding above each of the building’s windows and by their individual curtains. Longo’s most recent confrontation with the contentious nature of the American flag as symbol of both nationalism and protest is a 17-foot high black wax surfaced sculpture that appears to collapse into or fall through the gallery’s floor. A mediating note is a drawing of the poignantly solemn image of the riderless horse that led JFK’s funeral procession.

For more than 30 years Longo has been a prominent figure in New York’s cultural scene. His artworks, performance pieces, music performances, films and videos invent, cull, and recycle iconographic images from an expansive cultural visual cache to comment on ideas surrounding image potency, production and circulation. He was among the five artists included in the seminal 1977 Artists Space exhibition “Pictures” and is a key figure of the subsequently named Pictures Generation. In May Longo will be honored by The Kitchen. Longo has had one-person exhibitions at the Musée d’art moderne et d’art contemporain, Nice; Krefelder Kunstmuseum, Krefeld, Germany; the Albertina, Vienna; Isetan Museum of Art, Tokyo; the Deichtorhallen, Hamburg; Los Angeles County Museum of Art; Museum of Contemporary Art Chicago and the Menil Collection in Houston. Robert Longo has participated in Documenta, the Whitney Biennial and the Venice Biennale.

Gallery hours: Tuesday-Saturday, 10AM - 6PM

For more information, please contact Alexander Ferrando at alexander@metropictures.com or call 212 206 7100.

519 W 24TH ST NEW YORK, NY 10011 T 212 206 7100 F 212 337 0070
WWW.METROPICTURES.COM GALLERY@METROPICTURES.COM

METRO PICTURES

ROBERT LONGO
GANG OF COSMOS
April 10- May 23, 2014



Robert Longo

After Krasner (Birth, 1956), 2014

Charcoal on mounted paper

Image Dimensions:

103 1/8 x 60 inches

261.9 x 152.4 cm

Framed Dimensions:

105 5/8 x 62 1/2 inches

268.3 x 158.8 cm

(MP# RL-D-1395)



Robert Longo

After DeKooning (Woman and Bicycle, 1952-1953), 2014

Charcoal on mounted paper

Image Dimensions:

90 x 57 5/8 inches

228.6 x 146.4 cm

Framed Dimensions:

92 1/2 x 60 1/8 inches

235 x 152.7 cm

(MP# RL-D-1391)



Robert Longo

After Newman (Onement, 1, 1948),
2014

Charcoal on mounted paper

Image Dimensions:

80 x 47 3/4 inches

203.2 x 121.3 cm

Framed Dimensions:

82 1/2 x 50 1/4 inches

209.6 x 127.6 cm

(MP# RL-D-1396)



Robert Longo

After Kline (New York, NY 1953), 2014

Charcoal on mounted paper

Image Dimensions:

109 1/4 x 70 inches

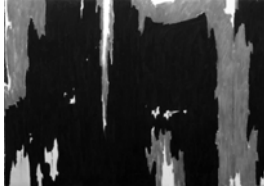
277.5 x 177.8 cm

Framed Dimensions:

111 3/4 x 72 1/2 inches

283.8 x 184.2 cm

(MP# RL-D-1400)



Robert Longo

After Still (1957-D No. 1), 2014

Charcoal on mounted paper

Image Dimensions:

99 1/2 x 140 inches

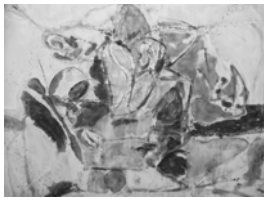
252.7 x 355.6 cm

Framed Dimensions:

103 x 143 1/2 inches

261.6 x 364.5 cm

(MP# RL-D-1394)



Robert Longo

After Frankenthaler (Mountains and Sea, 1952), 2014

Charcoal on mounted paper

Image Dimensions:

70 x 95 inches

177.8 x 241.3 cm

Framed Dimensions:

72 1/2 x 97 1/2 inches

184.2 x 247.7 cm

(MP# RL-D-1398)



Robert Longo

After Rothko (No. 14, 1951), 2014

Charcoal on mounted paper

Image Dimensions:

70 x 80 9/16 inches

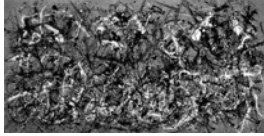
177.8 x 204.6 cm

Framed Dimensions:

72 1/2 x 83 1/16 inches

184.2 x 211 cm

(MP# RL-D-1402)



Robert Longo

After Pollock (Autumn 2013 Rhythm, Number 30, 1951), 2014

Charcoal on mounted paper

Image Dimensions:

91 1/4 x 180 inches

231.8 x 457.2 cm

Framed Dimensions:

91 1/4 x 183 1/2 inches

231.8 x 466.1 cm

(MP# RL-D-1393)



Robert Longo

After Mitchell (Ladybug, 1957), 2013

Charcoal on mounted paper

Image Dimensions:

69 1/8 x 96 inches

175.6 x 243.8 cm

Framed Dimensions:

71 5/8 x 98 1/2 inches

181.9 x 250.2 cm

(MP# RL-D-1390)



Robert Longo

After Motherwell (Elegy to the Spanish Republic, No. 70, 1961), 2013

Charcoal on mounted paper

Image Dimensions:

69 x 114 inches

175.3 x 289.6 cm

Framed Dimensions:

71 1/2 x 116 1/2 inches

181.6 x 295.9 cm

(MP# RL-D-1392)



Robert Longo

After Reinhardt (Abstract Painting, 1963), 2014

Charcoal on mounted paper

Image Dimensions:

60 x 60 inches

152.4 x 152.4 cm

Framed Dimensions:

62 1/2 x 62 1/2 inches

158.8 x 158.8 cm

(MP# RL-D-1397)



Robert Longo

After Lewis (Red Necks), 2014

Charcoal on mounted paper

Image Dimensions:

66 x 91 1/2 inches

167.6 x 232.4 cm

Framed Dimensions:

68 1/2 x 94 inches

174 x 238.8 cm

(MP# RL-D-1399)



Russell Rudzwick

Black Jack, JFK Funeral (1963), 1963

Gelatin Silver Print

Image Dimensions:

8 x 10 3/8 inches

20.3 x 26.4 cm

Framed Dimensions:

16 x 18 1/8 x 1 1/4 inches

40.6 x 46 x 3.2 cm

(MP# RL-P-33)