

MATTHEW MARKS GALLERY

1062 North Orange Grove, Los Angeles, California 90046 323-654-1830 matthewmarks.com

PRESS RELEASE

Terry Winters: patterns in a chromatic field

April 19 to June 21, 2014

Opening Saturday, April 19, 3:00 P.M. to 5:00 P.M.

Matthew Marks is pleased to announce **Terry Winters: patterns in a chromatic field**, the next exhibition in his gallery at 1062 North Orange Grove. The exhibition of new paintings is Winters' first one-person show in Los Angeles in more than two decades.

The twelve vibrantly colored abstract canvases take their title from a 1981 score for cello and piano by composer Morton Feldman and continue the artist's lifelong investigation of the intersection between representation and abstraction. Depicting a family of organic patterns in evolving configurations, the series demonstrates, in the artist's words, "how abstract processes can be used to build real-world images." The paintings feature a heightened chromatic palette, complex figure/ground reversals, and interlocking forms, as well as a variety of surface textures modified by successive layers of resins, oils, and waxes.

Accompanying the exhibition is a fully illustrated catalogue with an essay by Suzanne Hudson. The e-book includes a video interview with the artist directed by Matt Wolf.

Terry Winters (born 1949) lives and works in New York City and Columbia County, New York. His one-person museum exhibitions include the Tate Gallery, London (1986); the Whitney Museum of American Art, New York (1992); the Whitechapel Gallery, London (1998); the Kunsthalle Basel (2000); the Metropolitan Museum of Art, New York (2001); and the Irish Museum of Modern Art, Dublin (2009).

Terry Winters: patterns in a chromatic field will be on view at the Matthew Marks Gallery, 1062 North Orange Grove, Los Angeles, from April 19 through June 21, 2014, Tuesday through Saturday, 10:00 A.M. to 6:00 P.M.

For additional information, please contact Jeffrey Peabody at (212) 243-0200 or jeffrey@matthewmarks.com.

MATTHEW MARKS GALLERY

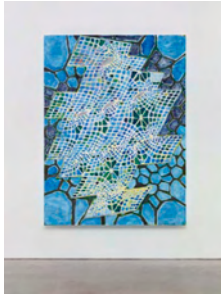
1062 North Orange Grove, Los Angeles, California 90046 323-654-1830 matthewmarks.com

Terry Winters

patterns in a chromatic field

April 19 - June 12, 2014

1062 North Orange Grove



Terry Winters

Blue Figure

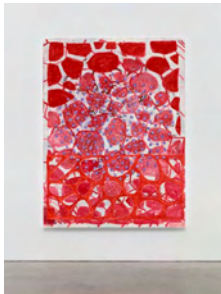
2013

Oil on linen

80 x 60 inches

203 x 152 cm

WINT.PA.38448



Terry Winters

Crimson Lake

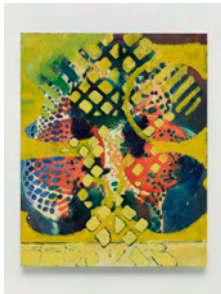
2013

Oil on linen

80 x 60 inches

203 x 152 cm

WINT.PA.38449



Terry Winters

patterns in a chromatic field (2)

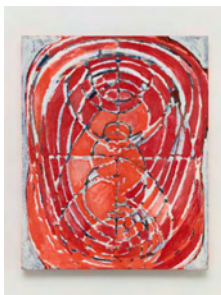
2013

Oil on linen

40 x 32 inches

102 x 81 cm

WINT.PA.38430



Terry Winters

patterns in a chromatic field (3)

2013

Oil on linen

40 x 32 inches

102 x 81 cm

WINT.PA.38431



Terry Winters

patterns in a chromatic field (4)

2013

Oil on linen

40 x 32 inches

102 x 81 cm

WINT.PA.38436



Terry Winters

patterns in a chromatic field (5)

2013

Oil on linen

40 x 32 inches

102 x 81 cm

WINT.PA.38437



Terry Winters

patterns in a chromatic field (9)

2013

Oil on linen

40 x 32 inches

102 x 81 cm

WINT.PA.38441



Terry Winters

patterns in a chromatic field (10)

2013

Oil on linen

40 x 32 inches

102 x 81 cm

WINT.PA.38442



Terry Winters

patterns in a chromatic field (11)

2013

Oil on linen

40 x 32 inches

102 x 81 cm

WINT.PA.38443



Terry Winters

patterns in a chromatic field (12)

2013

Oil on linen

40 x 32 inches

102 x 81 cm

WINT.PA.38444



Terry Winters

patterns in a chromatic field (13)

2013

Oil on linen

40 x 32 inches

102 x 81 cm

WINT.PA.38445



Terry Winters

patterns in a chromatic field (14)

2013

Oil on linen

40 x 32 inches

102 x 81 cm

WINT.PA.38446



Terry Winters

Red Ground

2013

Oil on linen

80 x 60 inches

203 x 152 cm

WINT.PA.38447