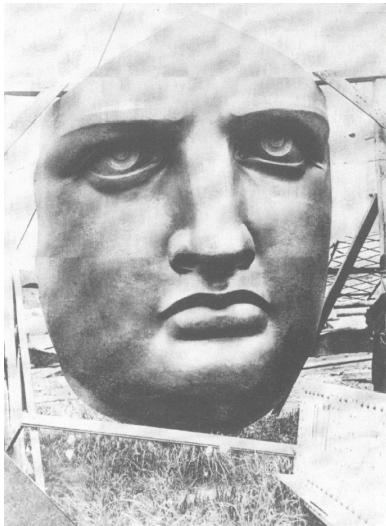


# GALERIE THADDAEUS ROPAC



## EMPIRE STATE New York Art Now

17 November 2013 – 15 February 2014

**Press visit Friday November 15th at 12pm**

Opening on Sunday 17 November 2013, 2pm-7pm

69, avenue du Général Leclerc  
Paris-Pantin

Curated by Alex Gartenfeld and Norman Rosenthal

Michele Abeles - Uri Aran - Darren Bader - Antoine Catala - Moyra Davey - Keith Edmier - LaToya Ruby Frazier - Dan Graham - Renée Green - Wade Guyton - Shadi Habib Allah - Jeff Koons - Nate Lowman - Danny McDonald - Bjarne Melgaard - John Miller - Takeshi Murata - Virginia Overton - Joyce Pensato - Adrian Piper - Rob Pruitt - R. H. Quaytman - Tabor Robak - Julian Schnabel - Ryan Sullivan

### PRESS RELEASE

Galerie Thaddaeus Ropac is very pleased to present the exhibition *Empire State. New York Art Now* in its Paris Pantin venue, organized by British curator Norman Rosenthal and Miami-based curator, writer and editor Alex Gartenfeld.

The exhibition explores the constantly shifting realities and mythologies of New York City. This ambitious intergenerational survey presents the work of twenty-five renowned and emerging New York City artists – each in depth and with important new work being shown – and suggests how they might re-imagine the relationship between their community and the life of the city. With painting, sculpture, photography, video, and installation, the artists in *Empire State* examine their city's enduring relevance to the world at a moment when urban life is being redefined rapidly everywhere.

Most of the art on view is newly commissioned, complemented by other significant works made in the past three years. We are delighted to present a painting and sculptures by **Jeff Koons** for the first time in Paris after his acclaimed exhibition at the Palace of Versailles in 2008. **Moyra Davey** will create a projection room in the exhibition for *Les Goddesses* (2011) and **Joyce Pensato** will realize one of her signature site specific large-scale wall painting.

“Manhattan is an accumulation of possible disasters that never happen,” wrote celebrated architect and theorist Rem Koolhaas. For New York City, the most popular disaster myth is that it will be eclipsed. Yet in the era of globalization and with pundits routinely declaring it in decline, The Big Apple remains the world's hegemonic force in the visual arts, with the most diverse concentration of artists, museums, arts organizations, galleries and public platforms in constant action and interplay.

The exhibition takes its title from the iconic mythologizing 2009 hip-hop anthem of the same name by rapper-turned-mogul Jay-Z and musician Alicia Keys, and references Empire, Antonio Negri and Michael Hardt's 2000 treatise on American-led global capitalism. In 2013, *Empire State* will echo and engage such allegories of America's socio-economic transition and subsequent shifts in status, confidence and power.

The artists in *Empire State* are grounded in institutional critique and studies of media and economics; they embrace hybridization and cross-disciplinary techniques; and they engage technology and abstraction to propose new models of expression and interpretation. One example is **Dan Graham's** mirrored pavilions combine Minimalism and architecture to reflect and double the human form. **Michele Abeles's** new photographic prints incorporate her installation views, as she constantly revises her autobiography according to her context.

In a new commission, **Keith Edmier** imagines a monumental sculpture according to the vernacular of the original Pennsylvania Station, a landmark of New York mythologizing: Designed by McKim, Mead & White and constructed in 1910 at the height of America's industrial revolution, Penn Station was a breathtaking masterpiece of Roman Neo-Classical architecture and a testament to New York's position as the de facto trade and culture capital of the New World. It was ignominiously demolished in 1963 at the height of New York's craze for all things Modern.

Perhaps most importantly, *Empire State* emphasizes a genealogy of artists: Confronting an increasingly corporatized art world spreading globally like a new Byzantium, artists are activating ever-shifting networks of relationships, collaborations and exchanges across the boundaries of generation, gender, perspective and technique. **R. H. Quaytman** will present a work from her series of portraits of New York artists in a visual expression of the act of networking and the invisible tracery of power and exchange.

*Empire State* will be accompanied by a catalogue (Galerie Thaddaeus Ropac/Skira) featuring extended essays by the curators and by Tom McDonough, John Miller, and Eileen Myles; a visual essay by Matt Keegan; and original texts on each of the artists by leading critics and curators, including Vinzenz Brinkmann, Bonnie Clearwater, Kim Conaty, Bruce Hainley, Hans Ulrich Obrist, Tina Kukielski, and others.

#### **About the curators**

Norman Rosenthal is a celebrated independent curator and critic based in London. He was Director of Exhibitions at the Royal Academy of Arts from 1977 through 2008. Rosenthal has organized dozens of critically acclaimed exhibitions, including such era-defining landmark surveys as "A New Spirit of Painting" (1981) and "Sensation" (1997).

Based in Miami, Alex Gartenfeld is Curator at the Museum of Contemporary Art North Miami, Senior Online Editor at Art in America and Interview magazines. He has co-founded two independent exhibition and project spaces in New York, and has organized exhibitions at the Zabłudowicz Collection, Team Gallery and Harris Lieberman.

#### **About the architect**

Jonathan Caplan studied at Columbia University, New York. He has taught at a variety of institutions, including the Architectural Association, London, and Cambridge University. He runs his own practice since 1997 specializing in projects that are related in one way or another to contemporary art.

#### **Galerie Thaddaeus Ropac Paris Pantin**

69, avenue Général Leclerc  
93500 Pantin  
t. +33 1 55 89 01 10  
Tuesday – Saturday, 10am to 7pm

**Website:** [www.ropac.net](http://www.ropac.net)

**Youtube:** [www.youtube.com/galerieropac](http://www.youtube.com/galerieropac)

**Twitter:** @Galerieropac

**Facebook:** <https://www.facebook.com/galerieropac>

*For further information on this exhibition, please contact Renaud Pillon, [renaud@ropac.net](mailto:renaud@ropac.net). For press and visuals, please contact Marcus Rothe, [marcus@ropac.net](mailto:marcus@ropac.net), or Alessandra Bellavita, [alessandra@ropac.net](mailto:alessandra@ropac.net).*

# GALERIE THADDAEUS ROPAC



**Michele Abeles**

*Flag Flag Flag (Bandiera Bandiera Bandiera)*, 2013

Archival pigment print (stampa a pigmenti archivistici)

5 photos :

142.8 x 100.7 x 4.7 cm (56.22 x 39.65 x 1.85 in) each

Ed. 1/5

MA 1000



**Michele Abeles**

*Flag Flag Flag (Bandiera Bandiera Bandiera)*, 2013

Archival pigment print (stampa a pigmenti archivistici)

5 photos :

142.8 x 100.7 x 4.7 cm (56.22 x 39.65 x 1.85 in) each

Ed. 2/5

MA 1001



**Michele Abeles**

*Flag Flag Flag (Bandiera Bandiera Bandiera)*, 2013

Archival pigment print (stampa a pigmenti archivistici)

5 photos :

142.8 x 100.7 x 4.7 cm (56.22 x 39.65 x 1.85 in) each

Ed. 3/5

MA 1002



**Michele Abeles**

*Flag Flag Flag (Bandiera Bandiera Bandiera)*, 2013

Archival pigment print (stampa a pigmenti archivistici)

5 photos :

142.8 x 100.7 x 4.7 cm (56.22 x 39.65 x 1.85 in) each

Ed. 4/5

MA 1003



**Michele Abeles**

*Flag Flag Flag (Bandiera Bandiera Bandiera)*, 2013

Archival pigment print (stampa a pigmenti archivistici)

5 photos :

142.8 x 100.7 x 4.7 cm (56.22 x 39.65 x 1.85 in) each

Ed. 5/5

MA 1004



**Uri Aran**

*Untitled*, 2013

Mixed media

101.6 x 83.8 x 127 cm (40 x 32.99 x 50 in)

UA 1001



**Uri Aran**

*Untitled (Dear Tenants)*, 2012/2013

Mixed media

106 x 121.9 x 61 cm (41.73 x 47.99 x 24.02 in)

UA 1009



**Uri Aran**

*Untitled (Department A)*, 2013

Mixed media

102 x 155 x 107 cm (40.16 x 61.02 x 42.13 in)

UA 1004

UA-053-13



**Uri Aran**

*Untitled (Department B)*, 2013

Mixed media

99.5 x 79 x 101.5 cm (39.17 x 31.1 x 39.96 in)

UA 1003

UA-054-13



**Uri Aran**

*Untitled (Department C)*, 2012/2013

Mixed media

109.9 x 121.3 x 99.7 cm (43.27 x 47.76 x 39.25 in)

UA 1007



**Uri Aran**

*Untitled (Department D)*, 2012/2013

Mixed Media

109.9 x 119.1 x 76.2 cm (43.27 x 46.89 x 30 in)

UA 1006



**Uri Aran**

*Untitled (Department E),*  
2012/2013  
Mixed media  
109.9 x 121.3 x 99.7 cm (43.27  
x 47.76 x 39.25 in)  
UA 1008



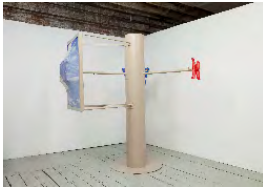
**Uri Aran**

*Untitled (Department F),* 2013  
Mixed media  
102 x 143 x 79 cm (40.16 x  
56.3 x 31.1 in)  
UA 1005  
UA-052-13



**Darren Bader**

*(video installation)*  
video installation (15 ipads)  
Variables dimensions  
DB 1000



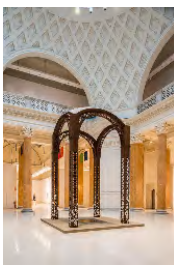
**Antoine Catala**

*Abracadabra*  
Aluminum, silicone rubber,  
latex, pump, mechanized arm  
203.2 x 187.9 x 208.2 cm (80 x  
73.98 x 81.97 in)  
AC 1000



**Moyra Davey**

*Les Goddesses,* 2011  
HD video with audio  
61 min.  
MD 1000



**Keith Edmier**

*Penn Station Ciborium*  
Steel, wood, concrete, glass,  
epoxy, fiberglass, polyurethane,  
railing, framgment  
columns (longxdeepxhigh): cm  
457,2 x 40,6 x 40,6 [15' x 16" x  
16"] each;  
trusses/arches  
(longxdeepxhigh): cm 243,8 x  
40,6 x 91,4 [8' x 16" x 3'];  
Steel ring (diamxhigh): cm  
121,9 x 15,2 [4' x 6"];  
Fiberglass reinforced dome  
(diamxhigh): cm 316 x 91,4  
KE 1000



**LaToya Ruby Frazier**

*Fifth Street Tavern on  
Braddock Avenue, 2011*

Gelatin silver print  
155 x 121.5 cm (61.02 x 47.83  
in)

Ed. 1/3  
LRF 1000



**LaToya Ruby Frazier**

*Houston & Lafayette New York  
City (Braddock PA Levi  
Billboard), 2011*

Gelatin silver print  
155 x 121.5 cm (61.02 x 47.83  
in)

Ed. 1/5  
LRF 1001



**LaToya Ruby Frazier**

*P.M.C Professional Building  
(Doctors' Offices), 2011*

Gelatin silver print  
121.5 x 155 cm (47.83 x 61.02  
in)

Ed. 1/3  
LRF 1002



**LaToya Ruby Frazier**

*U.P.M.C Braddock Hospital &  
Braddock Avenue, 2011*

Gelatin silver print  
121.5 x 155 cm (47.83 x 61.02  
in)

Ed. 1/3  
LRF 1003



**LaToya Ruby Frazier**

*U.P.M.C. Braddock Hospital  
(Between Fourth & Fifth Street),  
2011*

Gelatin silver print  
121.5 x 155 cm (47.83 x 61.02  
in)

Ed. 1/3  
LRF 1005



**LaToya Ruby Frazier**

*U.P.M.C. Braddock Hospital  
and the Holland Avenue  
Parking Lot, 2011*

Gelatin silver print  
121.5 x 155 cm (47.83 x 61.02  
in)

Ed. 1/3  
LRF 1004



**Dan Graham**

*Skateboard Pavilion, 1989*

Two-way mirror, plastic frame,  
aluminum, graffiti

model :94 x 127 x 127 cm  
(37.01 x 50 x 50 in)

base :121.9 x 127 x 127 cm  
(47.99 x 50 x 50 in)

DGR 1003



**Dan Graham**

*Two cubes/One rotated 45°,  
1985-1986*

Glass and aluminium

47.5 x 89 x 65.9 cm (18.7 x  
35.04 x 25.94 in)

DGR 1004



**Dan Graham**

*Untitled, 2011*

2-way mirror glass, aluminium,  
cellulose, MDF

107 x 107 x 71 cm (42.13 x  
42.13 x 27.95 in)

DGR 1002



**Dan Graham**

*Untitled, 2011*

2 way mirror glass, aluminium,  
cellulose, MDF

90 x 140 x 71 cm (35.43 x  
55.12 x 27.95 in)

Ed. 1/3

DGR 1005



**Renée Green**

*Space Poem #4, 2013*

Banners, acquajet pro display  
40 double sided banners

106.68 x 81.28 cm (42 x 32 in)

RGR 1000



**Wade Guyton**

*Untitled, 2008*

Epson UltraChrome inkjet on  
linen

213.4 x 175.3 cm (84.02 x  
69.02 in)

WG 1003



**Wade Guyton**

*Untitled, 2011*

Epson UltraChrome inkjet on  
linen

213.4 x 175.3 cm (84.02 x  
69.02 in)

WG 1004

wg2474



**Wade Guyton**

*Untitled*, 2011  
Epson UltraChrome inkjet  
213.4 x 175.3 cm (84.02 x  
69.02 in)  
WG 1005



**Shadi Habib Allah**

*Marat Bathtub*, 2013  
Internal: Fiberglass with  
Porcelain Bathtub; out copper  
or fiberglass with wrinkled metal  
finishes  
101 x 141 x 90 cm (39.76 x  
55.51 x 35.43 in)  
SHA 1000



**Jeff Koons**

*Cannonballs (Hulk)*, 2006-2010  
Polychromed aluminium  
132.7 x 148.6 x 136.2 cm  
(52.24 x 58.5 x 53.62 in)  
JK 1007



**Jeff Koons**

*Couple (Dots) Landscape*, 2009  
Oil on canvas  
274.3 x 371.2 cm (107.99 x  
146.14 in)  
JK 1008



**Jeff Koons**

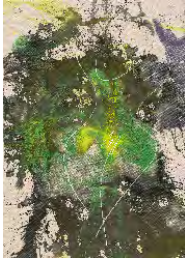
*Hulk (Friends)*, 2004-2012  
Polychromed bronze  
181 x 123.2 x 66 cm (71.26 x  
48.5 x 25.98 in)  
Ed. 3/3  
JK 1006



**Nate Lowman**

*Bring Back*, 2005  
Sticker and gesso on linen  
50.8 x 40.6 x 1.9 cm (20 x  
15.98 x .75 in)  
NL 1003





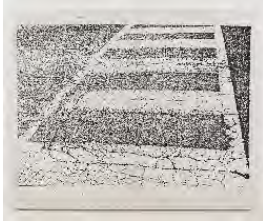
**Nate Lowman**

*Ciao Bella #1*, 2012

Acrylic and latex on canvas

162.6 x 114.3 x 3.2 cm (64 x 45  
x 1.25 in)

NL 1009



**Nate Lowman**

*[Crosswamlk]*, 2013

Alkyd on linen

152.4 x 182.9 x 3.8 cm (60 x 72  
x 1.5 in)

NL 1013

NL-PT-13-57



**Nate Lowman**

*Fire and Water (Lockerbie '90  
and Brazil '11)*, 2011

Oil and alkyd on canvas, alkyd  
on linen

83.8 x 121.9 cm (33 x 48 in)  
and

83.8 x 238.8 cm (33 x 94 in)

NL 1001

NL-PT-11-26



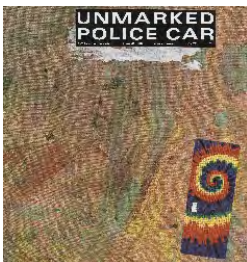
**Nate Lowman**

*Hairway to Steven*, 2012

Dirt, oil, alkyd, and sugar and  
dental floss on canvas and linen

264.1 x 99 cm (103.98 x 38.98  
in)

NL 1004



**Nate Lowman**

*TBT*, 2012

Oil, glue, dirt, mixed pigments,  
sticker on linen

53.3 x 50.8 cm (20.98 x 20 in)

NL 1006



**Nate Lowman**

*TBT*, 2012

Acrylic & oil on canvas

137.1 x 83.8 x 3.8 cm (53.98 x  
32.99 x 1.5 in)

NL 1007



**Nate Lowman**

*TBT*, 2012

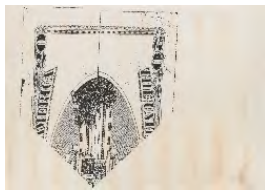
Oil, wood and alkyd on canvas  
60.9 x 60.9 x 1.9 cm (23.98 x  
23.98 x .75 in)  
NL 1008



**Nate Lowman**

*TBT*, 2012

Mixed media on canvas,  
mounted on stretched canvas  
40.6 x 53.3 x 2.5 cm (15.98 x  
20.98 x .98 in)  
NL 1010



**Nate Lowman**

*TBT*, 2012

Alkyd on linen  
132.1 x 188 cm (52 x 74 in)  
NL 1012  
NL-PT-12-120



**Nate Lowman**

*[TBT]*, 2013

Oil, silkscreen ink, and dental  
floss on canvas

261.6 x 167.6 x 3.8 cm (103 x  
66 x 1.5 in)  
NL 1014  
NL-PT-13-40



**Nate Lowman**

*[TBT]*, 2013

Oil and alkyd on canvas  
224.8 x 174 cm (88.5 x 68.5 in)  
Overall  
NL 1015  
NL-PT-13-75

**Danny McDonald**

*THE BEADS (That Bought  
Manhattan)*, 2013

Five channel video installation  
dimensions variable  
Ed. unique  
DMD 1003



**Bjarne Melgaard**

*Allen Jones Remakes (Suite of three figures), 2/4, 2013*

Mixed media (fiberglass resin, human hair, leather, sheep skin, steel, acrylic paint, enamel paint, glass, lucite)

Figure A1 Table approx.: 147.3 x 76.2 x 66 cm (57.99 x 30 x 25.98 in)

Figure A2 chair approx. : 68.5 x 101.6 x 83.8 cm (26.97 x 40 x 32.99 in)

Figure A3 Hatstand approx. : 132 x 38.1 x 154.9 cm (51.97 x 15 x 60.98 in)

Ed. of 3 +1AP

BJM 1000



**Bjarne Melgaard**

*Allen Jones Remakes (Table B), 2013*

Mixed media (Fiberglass resin, human hair, leather, sheep skin, steel [base], acrylic paint, enamel paint, glass, lucite)

147 x 76 x 81 cm (57.87 x 29.92 x 31.89 in)

Ed. of 3 +1AP

BMJ 1001



**Bjarne Melgaard**

*Untitled (Allen Jones/William Copley Suite), 2013*

Acrylic on canvas, mixed media (10 paintings and 6 dolls)

Dimensions variable

Paintings 102 x 76 x 4 cm (40 x 30 x 1,5 inches), each

BMJ 1002



**John Miller**

Wall paper

JM 1001



**John Miller**

*Public Display, 2013*

acrylic on di-bond, aluminum, formica and MDF

Base: 109.2 x 109.2 x 51.7 cm (42.99 x 42.99 x 20.35 in)

Top:147.3 x 147.3 x 1.27 cm (57.99 x 57.99 x .5 in)

Bottom plate: 147.3 x 147.3 x 1.27 cm (57.99 x 57.99 x .5 in)

Dibond sides (4):121.9 x 152.4 x 7.6 cm (47.99 x 60 x 2.99 in)

JM 1000



**Takeshi Murata**

*3AM*, 2012

Pigment print

147.3 x 118.1 cm (57.99 x 46.5 in)

Ed. of 3

TMU 1000



**Takeshi Murata**

*Baby*, 2012

Pigment print

174.3 x 118.1 cm (68.62 x 46.5 in)

Ed. of 3

TMU 1001



**Takeshi Murata**

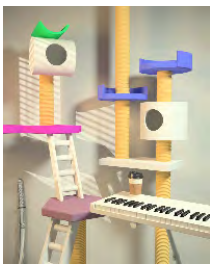
*Bernie's*, 2012

Pigment print

161.3 x 215.9 cm (63.5 x 85 in)

Ed. of 3

TMU 1005



**Takeshi Murata**

*Condos*, 2012

Pigment print

157.5 x 127 cm (62.01 x 50 in)

Ed. of 3

TMU 1006



**Takeshi Murata**

*Cyborg*, 2011

Pigment print

71.1 x 106.7 cm (27.99 x 42.01 in)

Ed. of 3

TMU 1003



**Takeshi Murata**

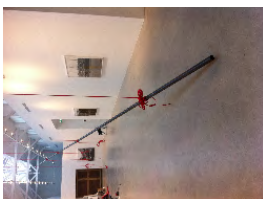
*The Sisterhood*, 2011

Pigment print

59 x 81 cm (23.23 x 31.89 in)

Ed. of 3

TMU 1002



**Virginia Overton**

*Untitled (Canna)*, 2013

Aluminium, rope

VOV 1000



**Joyce Pensato**

*Badass*, 2013  
Acrylic and enamel paint  
Variable dimensions  
Dimensions variable  
JPE 1000



**Adrian Piper**

*Everything #21*, 2010-2012  
4 blackboards, chalk [4  
lavagne, gesso]  
118 x 248 cm (46.46 x 97.64 in)  
AP 1000



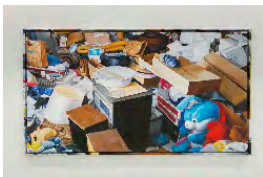
**Rob Pruitt**

*A fibreglass-model of a  
Brachiosaurus dinosaur,  
varnished in cosmi-chrome*,  
2012  
Fibreglass varnished in cosmi-  
chrome  
546 x 104.1 x 469.9 cm (214.96  
x 40.98 x 185 in)  
ROP 1000



**Rob Pruitt**

*A fibreglass-model of a  
Velociraptor dinosaur,  
varnished in cosmi-chrome*,  
2012  
Fibreglass varnished in cosmi-  
chrome  
259.7 x 429.9 cm (102.24 x  
169.25 in)  
ROP 1002



**Rob Pruitt**

*A painting (195 x 351 cm), oil  
on canvas, made by Golden  
Apple, China, depicting the*,  
2012  
Oil on canvas  
194.9 x 351.2 cm (76.73 x  
138.27 in)  
ROP 1003



**Rob Pruitt**

*A painting Diptych (243 x 429  
cm, 166 x 352 cm), oil on  
canvas, made by Golden*, 2012  
Oil on canvas  
243 x 429 cm (95.67 x 168.9 in)  
166.4 x 352.4 cm (65.51 x  
138.74 in)  
ROP 1004



**Rob Pruitt**

*A painting Quadriptyc, 2012*  
Oil on canvas  
106 x 284 cm (41.73 x 111.81 in)  
138 x 273 cm (54.33 x 107.48 in)  
139 x 274 cm (54.72 x 107.87 in)  
149 x 305 cm (58.66 x 120.08 in)  
ROP 1005



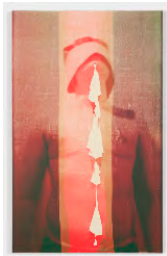
**Rob Pruitt**

*Dinosaur dropping, Styrofoam varnished in cosmi-chrome, 2012*  
Styrofoam varnished in cosmi-chrome  
69.9 x 86.4 cm (27.52 x 34.02 in)  
ROP 1006



**R.H. Quaytman**

*Cherchez Holopherne, Chapter 21, 2011*  
Silkscreen ink, gesso on wood  
50.8 x 82.2 x 2.5 cm (20 x 32.38 x 1 in)  
RQ 1001



**R.H. Quaytman**

*Point de Gaze, Chapter 23, 2011*  
Silkscreen ink, gesso on wood  
101.6 x 63 cm (40 x 24.8 in)  
RQ 1000



**Tabor Robak**

*Screen Peeking, 2013*  
12 55-inch TV monitors, media players, USB flash-drives  
TR 1000



**Julian Schnabel**

*And there was somebody wiping his tears with his flag I, 2012*  
oil paint and ink on polyester  
299.7 x 203.2 cm (117.99 x 80 in)  
JS 1021



**Julian Schnabel**  
*And there was somebody  
wiping his tears with his flag II,*  
2012  
oil paint and ink on polyester  
299.7 x 203.2 cm (117.99 x 80  
in)  
JS 1022



**Julian Schnabel**  
*And there was somebody  
wiping his tears with his flag III,*  
2012  
oil paint and ink on polyester  
299.7 x 203.2 cm (117.99 x 80  
in)  
JS 1023



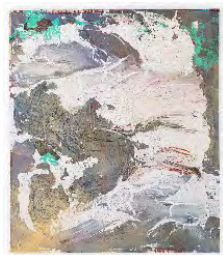
**Julian Schnabel**  
*And there was somebody  
wiping his tears with his flag IV,*  
2012  
oil paint and ink on polyester  
299.7 x 203.2 cm (117.99 x 80  
in)  
JS 1024



**Julian Schnabel**  
*And there was somebody  
wiping his tears with his flag V,*  
2012  
Oil paint and ink on polyester  
299.7 x 203.2 cm (117.99 x 80  
in)  
JS 1025



**Julian Schnabel**  
*And there was somebody  
wiping his tears with his flag VI,*  
2012  
Oil paint and ink on polyester  
299.7 x 203.2 cm (117.99 x 80  
in)  
JS 1026



**Ryan Sullivan**  
RSU 1003



**Ryan Sullivan**

*December 19, 2011 -*

*December 26, 2011, 2011*

Oil, enamel and latex on canvas

213.4 x 182.9 x 5.1 cm (84.02 x

72.01 x 2.01 in)

RSU 1000



**Ryan Sullivan**

*October 27, 2011 - December*

*27, 2011, 2011*

Oil, enamel and latex on canvas

213.4 x 182.9 cm (84.02 x

72.01 in)

RSU 1001



**Ryan Sullivan**

*September 26, 2011 - October*

*8, 2011, 2011*

Oil, enamel and latex on canvas

213.4 x 182.9 cm (84.02 x

72.01 in)

RSU 1002