

**Annette Messenger**

*Mes transports*

13 November - 21 December 2013

Opening Tuesday 12 November, 6 - 8 pm



PARIS, 26 October 2013 - Marian Goodman Gallery is delighted to announce an exhibition of new works by Annette Messenger on view at the Paris Gallery from 13th November to 21st December 2013.

*"Mes transports"* [My Transports] (2012-2013) signals the departure of a journey that will lead the visitor to the *"Continents noirs"* [Black Continents] (2010-2012) in the lower gallery.

*"Mes transports"* is composed of twenty-one elements. Sculptures made from various combinations of body parts, geometrical forms, animals and various objects are wrapped in black mat foil. These elements are displayed on wooden trolleys cushioned by folded removal blankets. These transports are in essence as real as they are metaphorical: showing the transportation of goods, of love, of blood, and joy etc...

*"They are protected by blankets used by transporters to soften their journey. Some of them are playful, some sinister but together they create a dark humor. Even as separate interties, isolated on their own transports, there is a dialogue between the works. Human body parts, animals, and grotesque characters regress to their own childhood."* explains Annette Messenger.

Scattered and static on the gallery floor these islands are in a latent state of mobility allowing various scenarios to arise: *"They are all waiting. Have they just arrived? Are they about to leave? (...) Will they be dispersed?"*, such are the questions that the artist asks without giving any answer, and explains: *"I'm working like a sleep walker; sometimes*

*I feel like a receiver, I'm receiving things, messages (I am a messenger...) and things happen".*

We find, once again, this islets idea and equivocal mobility in the "Continents noirs", presented in the lower space. These fragments, which move in various geometrical forms are erratic, stuck together and evoke the fantastical cities inspired by Jonathan Swift in his *Gulliver's Travels*.

These continents don't drift, they are turned upside down, they may fall. Static above our heads, also covered with mat aluminum foil, their black shadows dance on the wall to the rhythm of the pendular motion of the lights which illuminate the room.

With humor and derision both works explore some of the paradoxes and tensions of our contemporary world. Opening her work to a multitude of readings, Annette Messenger concludes without concluding: "(...) *I like various and multiple interpretations, that I have myself, and of course those of others....!*".



In the showroom are some smaller new works: "Pulsions", an installation of about forty ink drawings, "Icône", the word written with wire and net, "Le Tutu échelevé" with a fan and "La Colonne du petit chien".

Annette Messenger is an important and influential figure on the French and international art scene. She represented France at the 51st Venice Biennial and was awarded the Golden Lion for her project. Her work has been exhibited worldwide in the most prestigious museums: Museo de Arte Contemporáneo in Monterrey, Mexico (2010), Multimedia Complex of Actual Arts, Moscow (2010), Mori Art Museum, Tokyo (2008), Pompidou Centre, Paris (2007), Musée d'Art Moderne de la Ville de Paris (2004), Museo Reina Sofia (1999), Los Angeles County Museum of Art, Chicago Institute of Art et Museum of Modern Art in New York (1995).

In 2012, the Musée d'art moderne et contemporain de la ville de Strasbourg organised a substantiel exhibition. The artist is currently preparing a solo exhibition at the Museum of Contemporary Art in Sydney, which will open summer 2014.

**Presse contact:**

Raphaële Coutant  
raphaele@mariangoodman.com  
+33 (0)1 48 04 70 52

**captions :**

*Mes transports*, 2012- 2013 (detail)  
21 trolleys, blankets, wood, aluminium, mixed media  
variable dimensions

**upcoming exhibition :**

Tacita Dean  
from January 15, 2014

Annette Messenger

*Mes transports*

13 November – 21 December 2013

Upper Space :



*Mes transports*, 2012-2013  
21 elements, various objects, wood, metal,  
wheels, blankets, black wrap  
Variable dimensions  
Inv. # 15056

Stair case :



*Ensemble*, 2012  
2 shoes, black wrap  
25,5 x 32 x 11,5 cm

Lower space :



*Continents noirs*, 2010-12  
19 elements, various objects, black wrap,  
motorized light system  
Variable dimensions

Show-room :



*Pulsions*, 2013  
7 Indian ink drawings, 33 small printed drawings  
237 x 386 cm  
Inv. # 15057



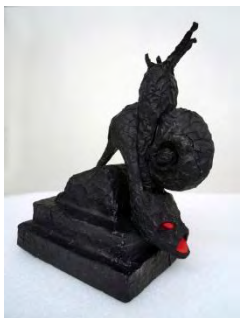
*Le tutu échevelé*, 2013  
Tutu, fake hair, fan, fishing swivel, rope  
Variable dimension  
Inv. # 15058



*Icône*, 2013  
Metal wire, nets  
235 x 120 cm  
Inv. # 15060



*La colonne du petit chien*, 2000-2012  
Various fabric, taxidermized animal  
75 x 80 x 35 cm  
Inv. # 15059



*La Chaussure visage*, 2013  
Various objects, black wrap  
40(h) x 26.5 x 19 cm