

Modern Art

Group Exhibition

17 January – 21 February 2026  
Helmet Row, EC1

Modern Art is pleased to present a group exhibition of gallery artists.

Richard Aldrich  
Forrest Bess  
Andrew Cranston  
René Daniëls  
Mark Handforth  
Sanya Kantarovsky  
Phillip Lai  
Mark Manders  
Francesca Mollett  
Frida Orupabo  
Anna-Bella Papp  
Pope.L  
Eva Rothschild  
Michael E. Smith  
Ricky Swallow  
Joseph Yaeger

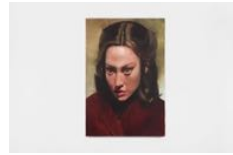
For more information, please contact Sam Talbot ([sam@sam-talbot.com](mailto:sam@sam-talbot.com)).

## Modern Art

### Gallery 1



Phillip Lai  
*Untitled*, 2025  
cast pewter  
4 x 35.5 x 23 cm  
1 5/8 x 14 x 9 in



Joseph Yaeger  
*It should get easier with time*, 2025  
watercolour on gessoed linen  
130 x 85 cm  
51 1/8 x 33 1/2 in



Michael E. Smith  
*untitled*, 2018  
laser, sweatshirt  
dimensions variable



Mark Handforth  
*Snakebite & Black*, 2025  
conch shell, steel, candles  
35 x 16 x 18 cm  
13 3/4 x 6 1/4 x 7 1/8 in



Andrew Cranston  
*In the white room*, 2026  
oil on canvas  
236 x 206 x 5.5 cm  
92 7/8 x 81 1/8 x 2 1/8 in



Richard Aldrich  
*Untitled*, 2025  
oil and wax on linen  
208 x 135 cm  
82 x 53 in

### Gallery 2



Eva Rothschild  
*Witch*, 2022  
ceramic with steel, jesmonite plinth  
163 x 44 x 33 cm  
64 1/8 x 17 3/8 x 13 in



Pope.L  
*Failure Drawing #273 Fresco Monitors*  
*Yellow, green, blue coffee*, 2004-06  
ink, acrylic, stains, hair, glue and  
collage on printed paper  
17.1 x 21.6 cm  
6 3/4 x 8 1/2 in



Pope.L  
*Failure Drawing #1240 Blue Sun,*  
*Best Western Dining Room*, 2004  
ballpoint pen, ink and collage on  
paper  
21.6 x 10 cm  
8 1/2 x 4 in



Pope.L  
*Failure Drawing #357 Crashes in*  
*Crevice*, 2006  
ink, acrylic, hair and glue on printed  
paper  
21 x 14.9 cm  
8 1/4 x 5 7/8 in



Pope.L  
*Failure Drawing #184*, 2004-07  
oil and acrylic paint, ink and pencil  
on printed paper  
27.9 x 21 cm  
11 x 8 1/4 in



Pope.L  
*Failure Drawing #580*, 2004-07  
oil and acrylic paint and pencil on  
paper  
24.9 x 25.6 cm  
9 3/4 x 10 1/8 in



Pope.L  
*Failure Drawing #347 Jankeen Art*  
*Reversible Cacti*, 2005-06  
ink, ballpoint pen, acrylic,  
watercolor, hair, glue and collage  
on printed paper  
21 x 14.8 cm  
8 1/4 x 5 7/8 in



Pope.L  
*Failure Drawing #1033 Creature*  
*Communication*, 2004  
ballpoint pen and ink on hotel  
stationery  
14 x 10.8 cm  
5 1/2 x 4 1/4 in

## Modern Art



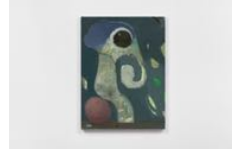
Pope.L  
*Failure Drawing #997 Four Scenes*, 2004  
ink and ballpoint pen on ruled paper  
27.8 x 21.4 cm  
11 x 8 3/8 in



Forrest Bess  
*Untitled No. 9*, 1959  
oil on canvas  
40.6 x 61 cm  
16 x 24 in



Pope.L  
*Failure Drawing #353 Real Landscape*, 2006  
ballpoint pen, acrylic, glue, coffee grinds and stains on printed paper  
31.8 x 40 cm  
12 1/2 x 15 3/4 in



Sanya Kantarovsky  
*Sitter*, 2025  
oil on linen  
80 x 59.7 cm  
31 1/2 x 23 1/2 in



Pope.L  
*Failure Drawing #312 Fall into Descent*, 2004-06  
ink, highlighter and acrylic on napkin  
19.4 x 11.4 cm  
7 5/8 x 4 1/2 in



Ricky Swallow  
*Skewed Open Structure with Rope #9*, 2023  
patinated bronze and oil paint  
15.2 x 35.6 x 26.7 cm  
6 x 14 x 10 1/2 in



Pope.L  
*Failure Drawing #279 Everything Falls, Green Sky*, 2004-06  
ink, ballpoint pen, acrylic, hair and glue on photocopy page  
14.8 x 21.6 cm  
5 7/8 x 8 1/2 in



René Daniëls  
*Memoires van een vergeetal*, 1986  
oil on canvas  
105.2 x 170.3 cm  
41 3/8 x 67 in  
on loan, the René Daniëls Foundation



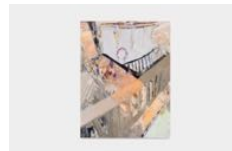
Frida Orupabo  
*Hands*, 2025  
fine art print on cotton paper, cotton rag mount bond, Dibond  
205 x 146 cm  
80 3/4 x 57 1/2 in



Anna-Bella Papp  
*Untitled (t-shirt)*, 2020  
clay  
39.5 x 29.5 x 3 cm  
15 1/2 x 11 5/8 x 1 1/8 in



Mark Manders  
*Studio Floor with Unfired Clay Head*, 2014-2025  
painted bronze, hair, wood, painted canvas, iron, glass  
160 x 193 x 71.5 cm  
63 x 76 x 28 1/8 in



Francesca Mollett  
*Parapets*, 2025  
oil on linen  
200.5 x 150.5 cm  
79 x 19 7/8 in