

Nan Goldin

Scopophilia

April 27 - June 29, 2013

1062 North Orange Grove

Opening: Friday, April 26, 6:00 - 8:00 P.M.

Press Release

Matthew Marks is pleased to announce *Nan Goldin: Scopophilia*, the next exhibition in his gallery at 1062 North Orange Grove, Los Angeles. This is the artist's first exhibition in Los Angeles in fifteen years and includes her newest multi-media work *Scopophilia*, a 25-minute-long slide installation commissioned by the Louvre Museum, as well as a group of related photographic works, many of which are being shown for the first time.

Scopophilia, which consists of over 400 photographs culled from Goldin's career, pairs her own autobiographical images with new photographs of paintings and sculpture from the Louvre's collection. Organized around themes of love and desire, *Scopophilia*, which means "the love of looking," reflects on Goldin's intensely personal photographs, as well as the unique permission given to the artist to photograph freely throughout the Louvre Museum. Of this project, Goldin explains, "Desire awoken by images is the project's true starting point. It is about the idea of taking a picture of a sculpture or a painting in an attempt to bring it to life."

Nan Goldin's work has been the subject of two major touring museum retrospectives, one organized in 1996 by the Whitney Museum of American Art, and another, in 2001, by the Centre Georges Pompidou. Goldin was admitted to the French Legion of Honor in 2006 and received the Hasselblad Foundation International Award in 2007. Most recently, she was awarded the 2012 Edward MacDowell medal.

Nan Goldin: *Scopophilia* will be on view at the Matthew Marks Gallery, 1062 North Orange Grove, from April 27th through June 22nd. Gallery hours: Tuesday through Saturday, 10:00 A.M. to 6:00 P.M.

For additional information, please contact Jeffrey Peabody at (323) 654-1830, or email jeffrey@matthewmarks.com.

MATTHEW MARKS GALLERY

1062 North Orange Grove, Los Angeles, California 90046 323-654-1830 matthewmarks.com

Nan Goldin

Scopophilia

April 27 - June 22, 2013

1062 North Orange Grove

Front Gallery I: Clockwise from Left at Entrance



Odalisque

2011

Chromogenic print

45 x 66 1/2 inches

114 x 169 cm



The back

2011

Chromogenic print

45 x 57 inches

114 x 145 cm



Marble quartet

2013

Chromogenic print

48 x 58 inches

122 x 147 cm



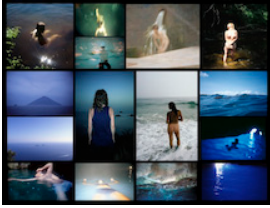
Young hermaphrodite sleeping, Le Louvre

2010

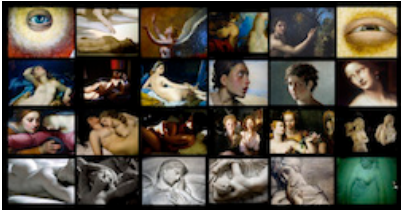
Chromogenic print

30 x 40 inches

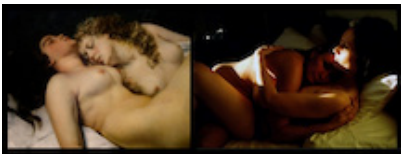
76 x 102 cm



Still water
2013
Chromogenic print
48 x 63 inches
122 x 160 cm



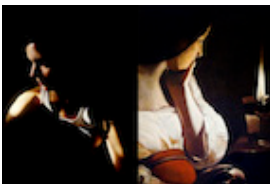
Eyes
2013
Chromogenic print
36 3/8 x 70 inches
92 x 178 cm



The nap, Paris
2010
Chromogenic print
24 x 64 1/2 inches
61 x 164 cm



Cupid with his wings on fire, Le Louvre
2010
Chromogenic print
40 x 27 3/8 inches
102 x 70 cm



Chimera
2013
Chromogenic print
27 3/8 x 40 inches
70 x 102 cm

Front Gallery II: Clockwise from Left at Entrance



Hair
2011
Chromogenic print
45 x 59 inches
114 x 150 cm



Shroud
2013
Chromogenic print
40 x 30 inches
101 x 76 cm



Crazy Scary
2011
Chromogenic print
48 x 55 7/8 inches
122 x 142 cm

Theater



Scopophilia
2010
Single channel high-definition video projection
(25 minutes, stereo)
Dimensions variable