

STEVE TURNER



KIAF 2024

September 4 - 8

Booth B29

At KIAF 2024, Steve Turner is pleased to present new paintings by Remus Grecu, Kevin McNamee-Tweed, Paige Jiyoung Moon, Augustina Wang and Jessica Wee. All five artists will be making their debut at KIAF in a booth that will focus on figuration, representation and narrative. Aside from the painting by Grecu, all of the works are intimate in scale. Those by McNamee-Tweed and Moon are roughly the size of a book and are meant to be read closely for their detail, whimsy and humor. The works of Grecu and Wee are composed of striking colors and strong contrasts. Their compositions are fanciful and wishful, idealizations of what might be in a world less dark than ours. Finally, Wang's works are dark, murky and mysterious. Like the works by the other artists, her narrative is open-ended, as if inspired by dream, observation and experience.

Remus Grecu (born 1976, Constanța Romania) creates paintings that depict idyllic scenes and the radiant beauty of a central female character. They are filled with light, happiness and beautiful color through depictions of rich silk garments, ripe fruit, blue skies and snow-capped mountains. They are inspired by Renaissance paintings which have luminous color as well as compositions that combine interiors with windows onto the outside world. The woman in Grecu's paintings is inspired by Cunégonde, a character from Voltaire's *Candide* that symbolizes the ephemeral nature of youthful beauty. Grecu earned a BA at the University of Arts, Bucharest (2001) and has had solo exhibitions in Los Angeles, Bucharest, Ghent, Copenhagen, Stockholm and Frankfurt between 2009 and 2024.

Kevin McNamee-Tweed (born 1984, Stanford, California) will present a group of sixteen modestly-scaled ceramic paintings at KIAF. Images include an "all-knowing moth" with flames encircling eyes on its wings, a hand reaching for a book on a shelf, and a sun rising or sinking above a hilltop. A recurring motif in McNamee-Tweed's practice is the room interior. In these densely filled spaces, papers, paintings, grocery lists, doodles, and notes-to-self cover the walls, while tabletops are scattered with objects, artworks, tools, books and pots. They typify McNamee-Tweed's ability to juxtapose

seemingly disparate images in a coherent and harmonious manner. McNamee-Tweed grew up near Chapel Hill, North Carolina before studying at New York University where he earned a BFA (2008). After living in Austin, Texas for seven years, he moved to Iowa City to enroll in the MFA program at the University of Iowa where he earned an MFA (2020). He has had two recent museum solo exhibitions—Institute of Contemporary Art, Chattanooga (2023) and Greenville County Museum of Art (2024) as well as numerous gallery solo exhibitions including at Harpers Books, New York (2020); L21 Gallery, Palma (2021); Steve Turner, Los Angeles (2019, 2020, 2021 & 2022); Cob, London (2022); Dutton Gallery, New York (2023) and Tatjana Pieters, Ghent (2023).

Paige Jiyoung Moon (born 1984, Seoul) creates works that depict scenes of her family engaged in everyday domestic activities as well as on special road trips. Her highly detailed small-scale paintings elevate otherwise ordinary activities such as her husband working in the garden, attending a classroom art demonstration or visiting a temple in Korea with her mother to something special that needs to be remembered, preserved and cherished. Her careful details, perspective, cropping and sense of humor make the mundane special, the small monumental and the personal universal. Moon moved to the United States to study at Art Center, Pasadena from which she earned a BFA in 2012. She has had three solo exhibitions at Steve Turner (2019, 2020 & 2024) and has also presented works at several art fairs since 2018. In 2023, her work was included in Made In LA, the biennial exhibition presented at the Hammer Museum, Los Angeles.

We are also pleased to announce that Moon was selected as one of ten artists to be featured in Kiaf SEOUL 2024 HIGHLIGHTS.

Augustina Wang (born 1999, New York) creates paintings that depict powerful Asian women in fantastical settings of her own invention. Inspired by the imagery of video games and the oppression historically faced by Asian women, Wang conjures up scenes with strong women seeking justice and retribution. Elegance and violence are strange partners yet in Wang's paintings they coexist nicely. Wang received her BFA in Painting from the Rhode Island School of Design (2022). She has had a solo exhibition at Sow & Tailor, Los Angeles (2023) and has presented works in group exhibitions at Steve Turner, Los Angeles; Thierry Goldberg, New York; Sow & Tailor, Los Angeles; Vollery Gallery, Dubai and Cierra Britton Gallery, New York.

Jessica Wee (born 1988, Englewood, New Jersey) creates paintings that explore the interconnectedness of experience, memory and cultural influence. Born in the United States to Korean parents, Wee grew up in France and Canada, with a fluid sense of identity that she describes as being in between cultures. She utilizes the framework of classical still life painting to portray Asian female subjects with strength and autonomy. Her unconventional juxtapositions, dream-like and sensitively painted in oil, reflect her ongoing effort to understand her Korean-ness. Wang earned a BFA in Studio Art at Concordia University, Montreal (2011) as well as a Diploma in Classical Realism at Angel Academy, Florence (2017). She has had solo exhibitions with Steve Turner, Los Angeles (2023); Latitude Gallery, New York (2022); Spring Break, New York (2022) and has had work included in group exhibitions in Canada and the United States since 2009.

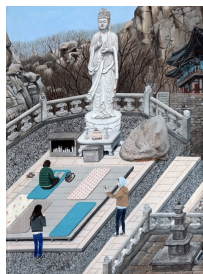
STEVE TURNER



Remus Grecu
Chained To The Clouds, 2024
Oil on linen
58 ¹/₄ x 53 ¹/₈ inches (148 x 135 cm)
r.grecu013728



Paige Jiyoung Moon
Tony's Printshop, 2013
Acrylic on panel
11 x 14 inches (27.9 x 35.6 cm)
p.moon013181



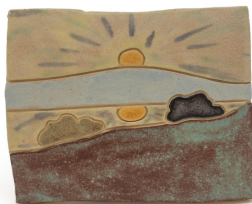
Paige Jiyoung Moon
Korean Temple, 2014
Acrylic on panel
16 x 12 inches (40.6 x 30.5 cm)
p.moon013718



Paige Jiyoung Moon
Carlos And Mia In The Garden, 2024
Acrylic on panel
20 x 16 inches (50.8 x 40.6 cm)
p.moon013717



Kevin McNamee-Tweed
Sun Over the Hill, 2024
Glazed ceramic
3 x 4 inches (7.6 x 10.2 cm)
k.mcnameetweed013610



Kevin McNamee-Tweed
Sun Over Hill, 2024
Glazed ceramic
3 ¹/₄ x 4 inches (8.3 x 10.2 cm)
k.mcnameetweed013611

STEVE TURNER



Kevin McNamee-Tweed
Hilltop (Sax), 2024
Glazed ceramic
5 x 5 ¹/₄ inches (12.7 x 13.3 cm)
k.mcnameetweed013632



Kevin McNamee-Tweed
White Woo Flower Vase, 2022
Glazed ceramic
7 x 4 inches (17.8 x 10.2 cm)
k.mcnameetweed012813



Kevin McNamee-Tweed
Shells (Pot), 2024
Glazed ceramic
5 ³/₄ x 5 ¹/₄ inches (14.6 x 13.3 cm)
k.mcnameetweed013615



Kevin McNamee-Tweed
Bird in Tree (Pot), 2024
Glazed ceramic
6 x 5 ¹/₂ inches (15.2 x 14 cm)
k.mcnameetweed013628



Kevin McNamee-Tweed
Accumulation (Table) (New Dawn New Age), 2024
Glazed ceramic
5 ¹/₂ x 6 inches (14 x 15.2 cm)
k.mcnameetweed013639



Kevin McNamee-Tweed
Tree, Sun and Moon (Pot), 2024
Glazed ceramic
7 x 5 ³/₄ inches (17.8 x 14.6 cm)
k.mcnameetweed013603

STEVE TURNER



Kevin McNamee-Tweed
Accumulation Narrative (A.M.P.M), 2024
Glazed ceramic
6 x 6 ³/₄ inches (15.2 x 17.1 cm)
k.mcnameetweed013637



Kevin McNamee-Tweed
Fish in Glass of Water, 2024
Glazed ceramic
7 x 6 inches (17.8 x 15.2 cm)
k.mcnameetweed013633



Kevin McNamee-Tweed
The All-Knowing Moth, 2024
Glazed ceramic
7 ¹/₄ x 6 ¹/₂ inches (18.4 x 16.5 cm)
k.mcnameetweed013606



Kevin McNamee-Tweed
Hand and Shelf (Red Clay), 2024
Glazed ceramic
6 ¹/₄ x 8 inches (15.9 x 20.3 cm)
k.mcnameetweed013623



Kevin McNamee-Tweed
Studio Accumulation (Vessels), 2022
Glazed ceramic
8 x 7 inches (20.3 x 17.8 cm)
k.mcnameetweed012795



Kevin McNamee-Tweed
All-Knowing Moth, 2024
Glazed ceramic
6 ¹/₂ x 8 ³/₄ inches (16.5 x 22.2 cm)
k.mcnameetweed013634

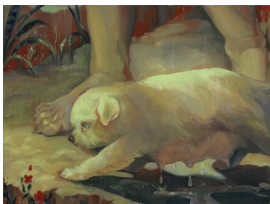
STEVE TURNER



Kevin McNamee-Tweed
In Water (Flowers and Horizon), 2022
Glazed ceramic
8 1/2 x 7 inches (21.6 x 17.8 cm)
k.mcnameetweed012780



Paige Jiyoung Moon
Joshua Tree, 2024
Acrylic on panel
16 x 20 inches (40.6 x 50.8 cm)
p.moon013824



Augustina Wang
Westward, 2024
Oil on linen
18 x 24 inches (45.7 x 61 cm)
a.wang013686



Augustina Wang
Ghost Moving With Sun, 2024
Oil on linen
24 x 18 inches (61 x 45.7 cm)
a.wang013687



Jessica Wee
Family Portrait, 2024
Oil on canvas
16 x 20 inches (40.6 x 50.8 cm)
j.wee013672



Jessica Wee
Peaches, 2024
Oil on canvas
16 x 20 inches (40.6 x 50.8 cm)
j.wee013673

STEVE TURNER



Jessica Wee
Mère Et Fille, 2024
Oil on canvas
30 x 24 inches (76.2 x 61 cm)
j.wee013670



Jessica Wee
Market Day, 2024
Oil on canvas
30 x 24 inches (76.2 x 61 cm)
j.wee013671