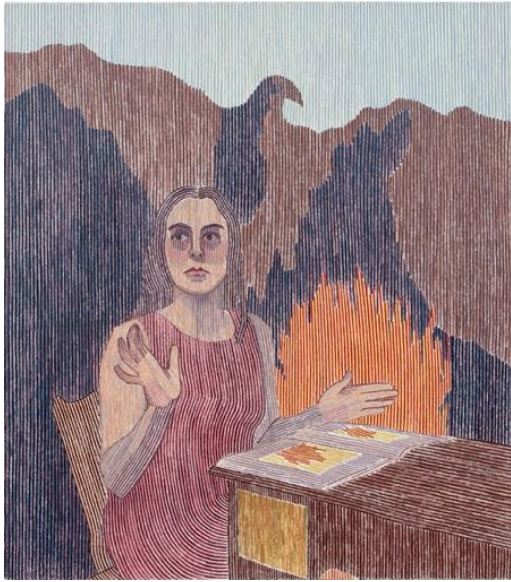


STEVE TURNER



Art Brussels 2024

April 25-28

At Art Brussels 2024, Steve Turner is pleased to present new paintings by Pablo Benzo, Etsu Egami and Brittany Miller as well as new ceramic sculptures by Becky Tucker. All four artists create figurative works that have been modified by varying forms of abstraction. Benzo stylizes and streamlines his images; Egami and Miller use colorful linear patterns and Tucker uses iridescent and crystalline glazes to reimagine historical artifacts

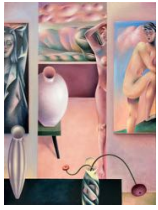
Pablo Benzo (born 1982, Santiago) earned a degree in Graphic Design at University of Chile, 2009 before relocating to Berlin where he still resides. He creates paintings that are inspired by imagination, dream, design and nature. They have a tropical island feeling as though they depict blue skies and oceans, fiery sunsets, green hills and exotic plants, fruits and flowers. Yet there are no such scenes. Benzo mostly creates exotic interior scenes that contain windows to the outer world.

Etsu Egami (born 1994, Tokyo) studied at The Karlsruhe University of Arts and Design and at the Central Academy of Fine Arts, Beijing. Her distinctive paintings reflect her deep interest in linguistic miscommunication and its implications on contemporary society. She lives and works in Tokyo and Beijing.

Brittany Miller (born 1990, Utica, New York) received a BFA and an MS from Pratt Institute in Brooklyn. Her paintings typically depict solitary figures resting in contemplation. While there is an overall serenity in her images, she adds complexity by painstakingly applying oil paint in straight or undulating parallel lines. In so doing, she also conveys mystery through the emptiness that lies between the lines.

Becky Tucker (born 1993, Robin Hood's Bay, England) graduated from Edinburgh College of Art (2017) before moving to Glasgow where she now lives. She creates ceramic sculptures that are inspired by historical artifacts such as armor, weaponry and architectural ornaments. In her suits of armor Tucker subverts the power of the source object by making hers fit a female form and by using lustrous glazes on fired clay.

STEVE TURNER



Pablo Benzo
Bonnard, 2024
Oil on linen
31 1/2 x 23 5/8 inches (80 x 60 cm)
p.benzo013643



Pablo Benzo
Torrential Monologue, 2024
Oil on linen
31 1/2 x 23 5/8 inches (80 x 60 cm)
p.benzo013644



Pablo Benzo
Sunshine Recorder, 2023
Oil on linen
51 1/8 x 39 3/8 inches (130 x 100 cm)
p.benzo012755



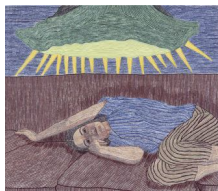
Etsu Egami
Hyper Rhythm, 2023
Oil on canvas
77 1/2 x 55 1/2 inches (197 x 141 cm)
e.egami013553



Etsu Egami
Our Distance, 2023
Oil on canvas
77 1/2 x 55 1/2 inches (197 x 141 cm)
e.egami013554



Brittany Miller
Vision, 2024
Oil on canvas
18 x 24 inches (45.7 x 61 cm)
b.miller013519



Brittany Miller
Rotundum, 2024
Oil on canvas
30 x 34 inches (76.2 x 86.4 cm)
b.miller013523



Brittany Miller
Magdala, 2024
Oil on canvas
34 x 30 inches (86.4 x 76.2 cm)
b.miller013524



Brittany Miller
The Moth, 2024
Oil on canvas
47 x 59 inches (119.4 x 149.9 cm)
b.miller013520



Becky Tucker
Aery, 2024
Glazed stoneware, strappings dyed with indigo leaf
37 3/8 x 16 7/8 x 12 5/8 inches (95 x 43 x 32 cm)
beckv.tucker013648



Becky Tucker
Arca, 2023
Glazed stoneware, strappings dyed with indigo leaf
38 5/8 x 16 7/8 x 14 1/8 inches (98 x 43 x 36 cm)
beckv.tucker013649



Becky Tucker
Mimic, 2024
Glazed stoneware, strappings dyed with indigo leaf
38 1/4 x 17 3/4 x 11 inches (97 x 45 x 28 cm)
beckv.tucker013650