

# STEVE TURNER

PRESS RELEASE



Drew Dodge: *At The Rainbow's End*

October 21 – November 18, 2023

Steve Turner is pleased to present *At The Rainbow's End*, a solo exhibition by New York-based Drew Dodge that features new paintings which depict his animal-human figure within a landscape of volcanic rock formations, stalagmite caverns, canyons, cenotes and crystal geodes. Each painting includes a prominently placed skull, which represents both the spiritual and corporeal nature of the figure and landscape. According to the artist, “*At The Rainbow's End*’ is a sublime place that is both vivid and void, where spirit touches earth, and optimistic imagination meets concrete doom, all within a beautiful illusion.”

Drew Dodge (born 2001, Monterey, California) earned a BFA from the Rhode Island School of Design (2022) and has had solo exhibitions at Steve Turner, Los Angeles (2021 & 2022); L21, Palma (2021) and 1969 Gallery, New York (2023).

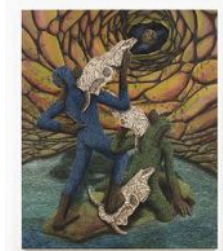
# STEVE TURNER



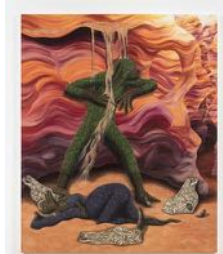
Drew Dodge  
**Take Me With You**, 2023  
Oil on canvas  
102 x 84 inches (259.1 x 213.4 cm)  
d.dodge013315



Drew Dodge  
**Vivid and Void**, 2023  
Oil on canvas  
102 x 84 inches (259.1 x 213.4 cm)  
d.dodge013316



Drew Dodge  
**Howl At The Moon**, 2023  
Oil on canvas  
102 x 84 inches (259.1 x 213.4 cm)  
d.dodge013317



Drew Dodge  
**The Scream**, 2023  
Oil on canvas  
102 x 84 inches (259.1 x 213.4 cm)  
d.dodge013318



Drew Dodge  
**There's A Reef Around Me**, 2023  
Oil on canvas  
78 x 78 inches (198.1 x 198.1 cm)  
d.dodge013319



Drew Dodge  
**Kiss**, 2023  
Oil on canvas  
78 x 78 inches (198.1 x 198.1 cm)  
d.dodge013320