

Press Release

**Fabian Peake. an eye either side**

Hauser & Wirth Somerset

1 October 2022 – 2 January 2023

Opening reception: Friday 30 September 2022



what is under there? oh, it's olives. what is  
under the plate? a day of sun, a flat  
day of rain. top hats talked; authority. I see  
the oval cast its shadow, its plastic horse shoe.  
blue light glows on the school's words. we went,  
she cursed. a few kilts, a few high heels.  
was that last squeak real? envelope's flap covered the  
chalk horse on the stairs to ..... a decision. delineate  
the fury. I can only see the changing maps

on the way up. does the seam speak French?  
the kiss does. vertical. I will remember not footsteps  
of a daughter, the way the cloth folds. click.  
shimmering lines cut the gardens and on Thursday people's  
faces were melted at the edge. a half-spelt road,  
noises next to my elbow. they lay the bricks  
on the ground where wheels will crush centipedes. why  
an eye either side of a polished peak? that  
one, clomping, pushed the chair. we didn't stay; she

didn't want to. umbrellas stayed up. unheard words were  
scrutinized. a cousin, unseen, died. I will mind the  
scab when the clipper plies to and fro. the  
rain held her legs – are you going already? where  
the bottle struck the raised scab hardens. red wedge  
slides under maroon. make sure you comment. the light  
would make a difference. always, you know, he leaves  
the gate open – the milky microbes can get in.  
throw away the scissors and cook your marzipan moods.

**Fabian Peake, 'an eye either side', 14/16 May 2022**

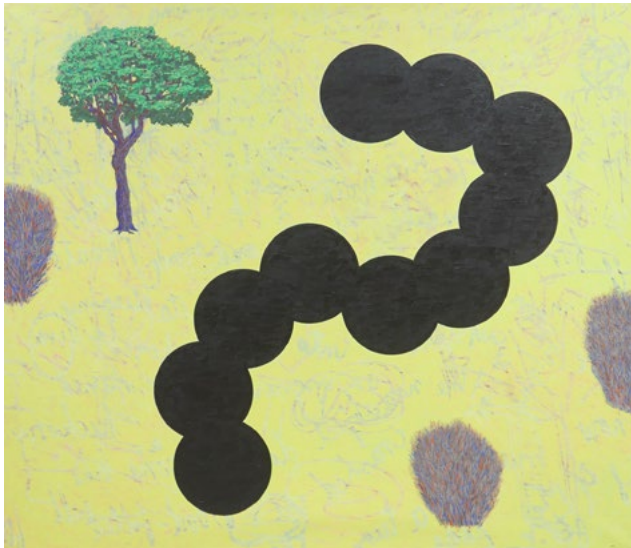
**HAUSER & WIRTH**  
SOMERSET

**About the exhibition**

Fabian Peake emerged as a painter on the London art scene in the late 1960s. In the decades since, he has expanded his practice including several dramatic stylistic leaps, each time mastering a new visual language and exploring its capacity for image making. While he started out as a painter, Peake's later work broadened to incorporate tailored textile wall pieces, cut-out reliefs, sculpture, drawing, photography, writing and poetry, with each informing one another.

This landmark exhibition marks the artist's 80th birthday and is a celebration of Peake's broad and multifaceted career, as both artist and writer. Spanning six decades, the exhibition will encompass early paintings from the 1970s to new works and will showcase Peake's playful and experimental use of diverse media.

At the core of Peake's work is a concern with meaning, how it is constructed and where it is recomposed into something new. He approaches images and words as material, in the manner of collage, establishing a parallel between the visual and textual. Peake is interested in ideas of theatricality, performance, and play. He adopts a neo-dada sensibility in which chance undermines predetermined outcomes, and games, whether with image or language, become the means through which to compose and create. He is also indebted to Pop art, however in his work images become symbols within a highly personal lexicon of meaning.



Peake is the son of the writer, illustrator and artist Mervyn Peake (1911 – 1968), best known for the 'Gormenghast' series of fantasy novels, and the painter and writer Maeve Gilmore (1917 – 1983). Peake studied first at Chelsea College of Art and then at the Royal College of Art. As a student he met his wife, the artist Phyllida Barlow, with whom he has five children including the artists Eddie Peake and Florence Peake. For many years, Peake taught painting as a Senior Lecturer in the Fine Art Department of Manchester Metropolitan University, while continuing his own career as an artist. He has had numerous solo exhibitions, the most recent at the Kunstmuseum, Luzern in 2019 and has been included in various group exhibitions in Great Britain, Europe, the United States and South America. He lives and works in London.

This exhibition runs alongside 'Louise Bourgeois. Drawing Intimacy 1939 - 2010' at Hauser & Wirth Somerset until 2 January 2023. An extensive event and learning programme will accompany both exhibitions throughout the autumn and winter, visit [hauserwirth.com](http://hauserwirth.com) for further details.

**HAUSER & WIRTH**  
SOMERSET



**Press Contacts:**

Laura Cook  
lauracook@hauserwirth.com  
+44 (0)7920 414 876

**Hauser & Wirth Somerset**

Durslade Farm, Dropping Lane  
Bruton, Somerset BA10 0NL

**Gallery hours:**

Tuesday – Sunday  
10 am – 5 pm (Oct)  
10 am – 4 pm (Nov-Jan)

**[www.hauserwirth.com](http://www.hauserwirth.com)**  
**[@hauserwirthsomerset](https://www.instagram.com/hauserwirthsomerset)**

**Copyright and Courtesy Credits:**

All images: © Fabian Peake  
Courtesy the artist and Hauser & Wirth

Fabian Peake  
Pierrot's Message  
1971  
Oil on canvas  
182 x 243 cm / 71 5/8 x 95 5/8 in

Fabian Peake  
The Thought  
2021 - 2022  
Oil on canvas  
134.5 x 155 cm / 53 x 61 in

Fabian Peake  
A Pineapple's Distain  
2017  
Oil on canvas  
66 x 56 cm / 26 x 22 in

Fabian Peake by John Malcolm Couzins  
modern bromide print, 31 July 1971  
Estate John Malcolm Couzins



**Explore our history >**