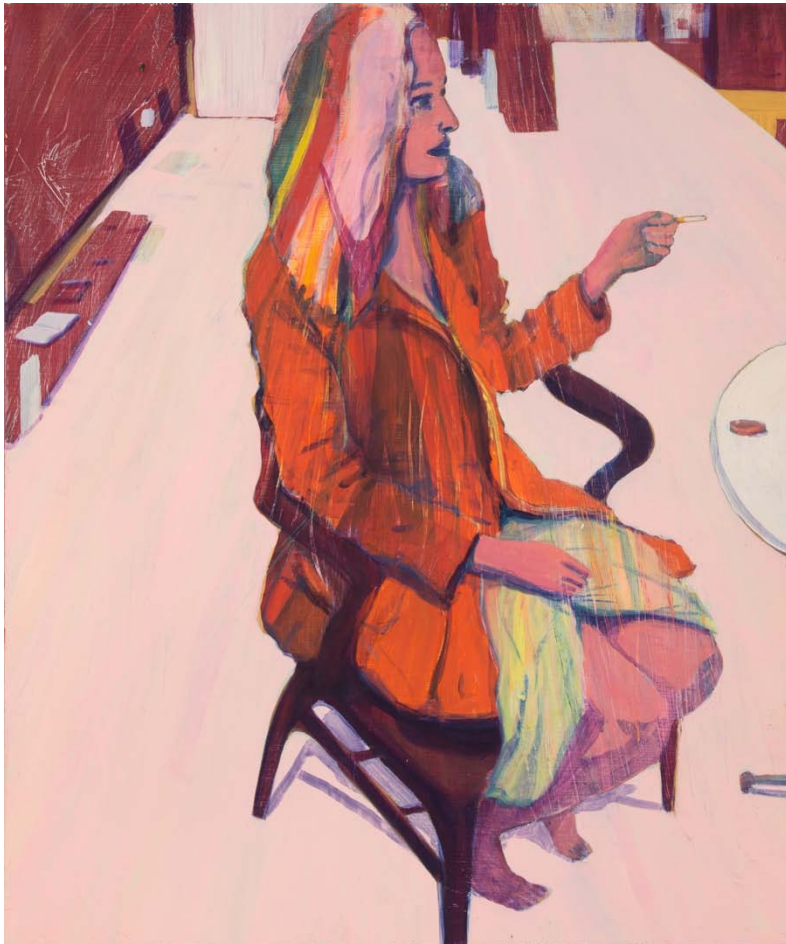


Victoria Miro

Unmasked

Exhibition 12 February–27 March 2022

Victoria Miro Venice, Il Capricorno, San Marco 1994, 30124 Venice, Italy



Jules de Balincourt
Sarah in the Studio, 2021
Oil on panel
61 x 50.8 cm
24 x 20 in
© Jules de Balincourt
Courtesy the artist and Victoria Miro

Victoria Miro is delighted to present an exhibition in Venice of works by Milton Avery, Jules de Balincourt, Hernan Bas, María Berrío, Chantal Joffe, Doron Langberg, Alice Neel and Celia Paul.

Seeing faces and communicating unspoken emotions and thoughts via facial expression has never seemed more significant than now, after nearly two years of a pandemic which has made mask-wearing an essential aspect of everyday life. In these works, a number of which have been created especially for the exhibition, artists convey the myriad nuances of human countenance: the warmth of a friend's smile; the pursed lips of a toddler; the resolute gaze of a self-portrait...

Featuring works by Milton Avery, Hernan Bas and Alice Neel, with new paintings by Jules de Balincourt, María Berrío, Chantal Joffé, Doron Langberg and Celia Paul, *Unmasked* coincides with the Carnival of Venice, which boasts a tradition of elaborate mask wearing that dates back to the thirteenth century, when individuals from all social classes and walks of life could mingle with concealed identities.

The exhibition celebrates the physicality of paint and human presence while encompassing subtleties of expression and connection – how a look conveys or betrays emotion and reveals essential aspects of character or psychological states. It confirms that, while our relationship to faces is ever-changing and increasingly mediated, our fascination with them and all they tell us about ourselves and our own experience is hard-wired and primal.

For further press information please contact:

Victoria Miro Kathy Stephenson | Director of Communications | kathy@victoria-miro.com | +44 (0) 20 7549 0422

Rees & Co Rosanna Hawkins | rosanna@reesandco.com | +44 (0)7910 092 634