

Modern Art

Karla Black

28 January – 26 February 2022
Bury St, SW1

Modern Art is pleased to announce a solo exhibition of new work by Karla Black. This is Black's fourth solo exhibition with Modern Art.

For the past twenty years, Karla Black has been making sculptures that explore the physical and psychic properties of the materials that populate her everyday life. Black's sculptures come from modest means: paper, cellophane, cosmetics and other household, ready-to-hand substances (bath bombs, Gaviscon, soil, polystyrene, Sellotape, and Vaseline, for example) are her materials of choice, employed for their visual and tactile properties, as opposed to any overt referential significance. These materials are processed and worked through to the limits of their physical parameters, becoming unrecognizable and utterly unique forms, shapes and structures that hover mid-air from the ceiling, attach to walls or other features of the space, or cover the surface of the ground or walls in chalky, pastel colours. In this way, Black's sculptures respond to the space they are in; the pre-existing visual and spatial features of the architecture becoming cues for Black's treatment of it, which can be playful, overwhelming, exploratory and effusive.

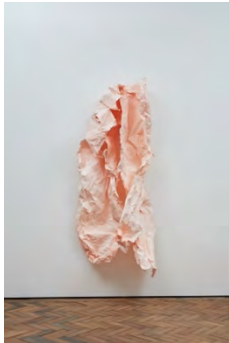
Karla Black's exhibition for Modern Art is comprised of a series of new sculptures made from soaked and dried cartridge paper and watercolour inks. Using only red, orange and yellow inks blended together, the works are each bathed in varying shades of pink or peach. The paper is left to soak, and then hung out to dry over various household objects from which the sculptures gain their shapes and forms. As such, Black's new works are more pared back than is typical of her sculptures, and the exhibition as a whole seems to question what is most necessary and essential in her work, keeping only the bare bones. This economy of means is adopted by Black both through a reflection upon the past two decades of her practice characterised by acceleration, but also because of the material and psychical conditions of living and making that have been redefined by the pandemic.

Karla Black was born in 1972 in Alexandria, UK, and lives and works in Glasgow. Her work has been the subject of solo exhibitions at institutions including Fruitmarket Gallery, Edinburgh (2021); Des Moines Art Centre, Des Moines, IA, USA (2020); Schirn Kunsthalle Frankfurt, Frankfurt (2019); The Power Plant, Toronto (2018); Museum Dhondt-Dhaenens, Deurle, Belgium (2017); Irish Museum of Modern Art, Dublin (2015); Institute of Contemporary Art, Philadelphia, PA, USA (2013); Schinkel Pavillon, Berlin (2012); Inverleith House, Edinburgh (2009); Modern Art Oxford, Oxford (2009). Black's work has been included in group exhibitions at Museu d'Art Contemporani de Barcelona, Barcelona, Spain; Whitechapel Gallery, London; Turner Contemporary, Margate; Scottish National Gallery of Modern Art, Edinburgh; Centre Pompidou, Paris, France; Tate Britain, London. Karla Black was nominated for the Turner prize in 2011, and that same year she represented Scotland at the 54th International Art Exhibition – La Biennale di Venezia, Venice, Italy.

For more information, please contact Alex Glover: alexander@modernart.net

Karla Black
28 January – 26 February 2022

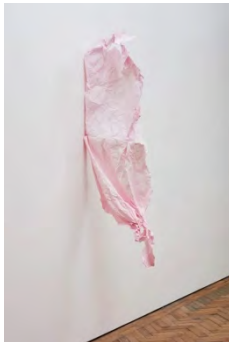
Upstairs
(clockwise):



Comfort in Common, 2022
cartridge paper and
watercolour ink
183 x 79 x 41 cm
72 1/8 x 31 1/8 x 16 1/8 in
(MA-BLACK-00218)



Apart From Itself, 2022
cartridge paper and
watercolour ink
47 x 56 x 29 cm
18 1/2 x 22 1/8 x 11 3/8 in
(MA-BLACK-00222)



My Home Too, 2022
cartridge paper and
watercolour ink
151 x 30 x 47 cm
59 1/2 x 11 3/4 x 18 1/2 in
(MA-BLACK-00219)



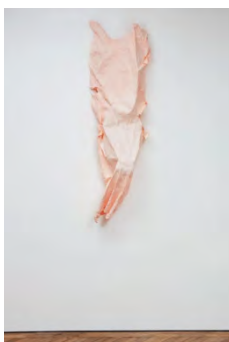
Thrown Consequence,
2022
cartridge paper and
watercolour ink
90 x 120 x 65 cm
35 3/8 x 47 1/4 x 25 5/8 in
(MA-BLACK-00223)



Though Warm, 2022
cartridge paper and
watercolour ink
197 x 90 x 41 cm
77 1/2 x 35 3/8 x 16 1/8 in
(MA-BLACK-00220)



Corners Continue, 2022
cartridge paper and
watercolour ink
81 x 43 x 38 cm
31 7/8 x 16 7/8 x 15 in
(MA-BLACK-00224)



Resembles Reflection, 2022
cartridge paper and
watercolour ink
188 x 52 x 38 cm
74 1/8 x 20 1/2 x 15 in
(MA-BLACK-00221)



Recognition Toll, 2022
cartridge paper and
watercolour ink
166 x 80 x 66 cm
65 3/8 x 31 1/2 x 26 in
(MA-BLACK-00225)

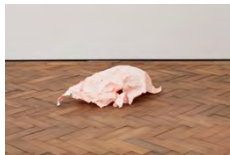
Downstairs
(clockwise):



Seen In Time, 2022
cartridge paper and
watercolour ink
33 x 498 x 189 cm
13 x 196 1/8 x 74 3/8 in
(MA-BLACK-00226)



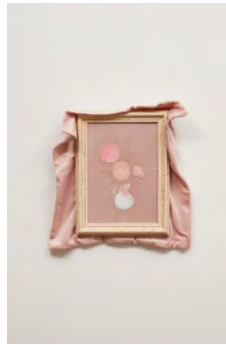
Contest Levels, 2022
cartridge paper and
watercolour ink
40 x 100 x 55 cm
15 3/4 x 39 3/8 x 21 5/8 in
(MA-BLACK-00227)



Here Warmth, 2022
cartridge paper and
watercolour ink
15 x 68 x 35 cm
5 7/8 x 26 3/4 x 13 3/4 in
(MA-BLACK-00228)



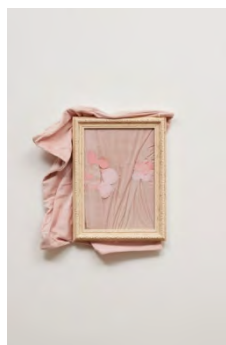
Provoke To Continue,
2022
velvet duvet cover, oil paint
231 x 231 x 5 cm
91 x 91 x 2 in
(MA-BLACK-00229)



Provoked To Continue,
2020
velvet cushion cover, oil
paint, glass, wooden frame
40 x 41.5 x 3 cm
15 3/4 x 16 3/8 x 1 1/8 in
(MA-BLACK-00231)



Opposite Mode, 2020
velvet cushion cover, oil
paint, glass, wooden frame
47 x 29 x 6 cm
18 1/2 x 11 3/8 x 2 3/8 in
(MA-BLACK-00232)



Seen On Time, 2020
velvet cushion cover, oil
paint, glass, wooden frame
40.5 x 35 x 3 cm
16 x 13 3/4 x 1 1/8 in
(MA-BLACK-00233)