

ALMINE RECH

Art Basel Miami Beach 2021
Meridians M11

Approximating a mural in size and appearance, Kenny Scharf's *Untitled* is a prime example of the artist's stylized graffiti vocabulary. Together with his close friends Jean-Michel Basquiat and Keith Haring, Scharf played a key role in reviving the New York art scene in the early 1980s. 'Street Art' is a name recently given to their practice, but the idea behind it was to make art more accessible to a wide public. It was during this time that Scharf was included in the 1985 Whitney Biennial, which marked the beginning of his international acclaim.

References to popular culture as well as imagined anthropomorphic creatures reoccur throughout his works. His compositions are dynamic deconstructions of artistic hierarchies, echoing the philosophy of Pop artists. Scharf describes his practice: 'Surrealism is about the unconscious.... The images come from the unconscious except that my unconscious is filled with pop imagery. My unconscious is pop, so therefore the art would be Pop-Surrealism.'

Kenny Scharf (born 1958 in Los Angeles) lives and works in Los Angeles



Kenny Scharf, *Untitled*, 1994 - Spray on wood, 183 x 680 x 6 cm, 72 1/8 x 267 3/4 x 2 3/8 in / © Kenny Scharf - Courtesy of the Artist and Almine Rech
- Photo: Kenny Scharf.

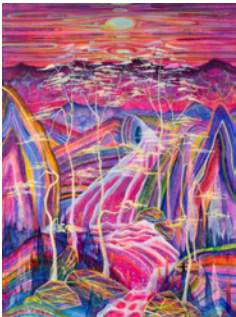
ALMINE RECH

Art Basel Miami Beach 2021
Booth D10

On the occasion of the 2021 edition of Art Basel Miami Beach, Almine Rech proposes a group exhibition featuring paintings and sculptures by the gallery's long- and newly-represented artists. While the selection of artists represents a diverse range of socio-cultural backgrounds and epochs, the works on display epitomize their shared outlook to endlessly challenge conventional artistic dialogues and production methods.

Image Credit: Courtesy of the Artist and Almine Rech

Press Images



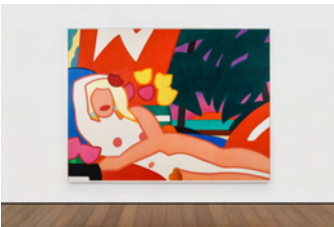
Huang Yuxing

The Source of the BaiLong River, 2021

Acrylic on Canvas

120 x 90

47 1/4 x 35 3/8

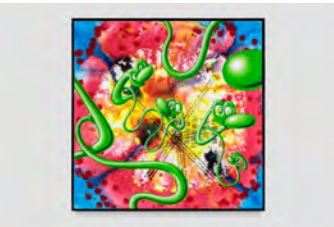


Tom WESSELMANN

Sunset Nude with Palm Trees, 2003 oil
on canvas

251 x 331 x 8,5 cm (framed)

98 7/8 x 130 3/8 x 3 3/8 Inches (framed)



Kenny SCHARF

Toungecton, 2021

Oil, acrylic and silk screen ink on linen
with powder coated aluminum frame

61 x 61 cm

24 x 24 in