

Press Release

Horizon

Lisson Gallery Cork Street, Mayfair

22 Cork Street

6 – 31 October 2020

Lisson Gallery is delighted to announce the launch of its new space in Mayfair, opening with an exhibition titled *Horizon*. Launching during Frieze Week 2020, the gallery will be at the heart of London's Frieze activity among the Cork Street Galleries, with the fair's planned off-site projects, performances and events. Supplementing the gallery's historic locations on Bell and Lisson Streets, Lisson's new Mayfair outpost will present a variety of solo and group exhibitions. The opening exhibition uses the term *Horizon* as a central point, presenting works by artists who look beyond the markers of our time, to something beyond, almost outside of our grasp. The show is a unifying point for multiple voices and perspectives, creating an opportunity to reflect not only on the past, but a vision for the future, as well as a possible new today. Highlights include John Akomfrah's 2012 film, *Peripeteia*; a large-scale tree root by Ai Weiwei; a triptych painting by Laure Prouvost; a Ryan Gander animatronic stray cat on a plinth; a deep glistening mirror by Anish Kapoor; and a selection of paintings illustrating the spectrum of the medium, from Mary Corse to Lee Ufan and Stanley Whitney.

The presentation will include John Akomfrah's groundbreaking film, *Peripeteia* (2012). Taking as its starting point two drawings by Albrecht Dürer – two of the earliest Western representations of black people – *Peripeteia* is the first part of a proposed trilogy that creatively looks at the traces, appearances and disappearances of early African life in Europe. This screening will complement the new edition that Akomfrah has designed for the October issue of Frieze Magazine, to raise money for the organisation's new Curatorial Fellowship, supporting bursary roles for BAME-identifying young curators, in collaboration with Zoe Whitley at the Chisenhale. Following this on 17 November, Akomfrah will open a new show at Lisson Gallery London, presenting his film commissioned by the Ghana Pavilion at the 2019 Venice Biennale, *Four Nocturnes*, as well as debuting a new series of film and photographic works that respond to the events of 2020.

Ryan Gander, Haroon Mirza, Mary Corse and Allora & Calzadilla will unveil new work for the exhibition (all 2020). Ryan Gander will present an animatronic stray cat, which he refers to as *The squatters*, because of their inhabiting of sculptural plinths previously owned by historic works of art – in this case David Hammons' *Untitled (Night Train)* (1989). Alongside this, Gander has created a new graphite-based work, highlighting the themes of legacy and mark-making that also manifest in his exhibition, *These are the markers of our time*, at Lisson Gallery's new space in New York. A wall-based work by Haroon Mirza, using reconfigured solar cells, will be presented in tandem with a work from the same series in Frieze's Cork Street exhibition, curated by Victor Wang.

A painting by Mary Corse, embedding acrylic squares and glass microspheres that creates a dynamic illuminating effect, will also be included, coinciding with Corse's exhibition of new work on Bell Street. Other paintings include a large-scale triptych by Laure Prouvost, *The Hidden Paintings Grandma Improved - Together Ailleur* (2019); a new electromagnetic painting, made using gold mirror foil, by Allora & Calzadilla; a significant Stanley Whitney oil on canvas from 1996; and a two-panel painting by Joanna Pousette-Dart.

Additionally on show will be Ai Weiwei's large-scale tree root, *Level* (2019), plus the artist's *Coca Cola Vase* (2015); Anish Kapoor's *Oriental Blue and Black Mist satin mirror* (2019); Rodney Graham's *Artist in Artists' Bar, 1950s* lightbox (2016); and Lee Ufan's painting, *Dialogue* (2018).

In Marylebone, Lisson Gallery will present exhibitions by Laure Prouvost at 67 Lisson Street, and Mary Corse at 27 Bell Street (both 7 October – 7 November). Lisson's Frieze Art Fair's Online Viewing Room will be a solo presentation by Laure Prouvost.

About Lisson Gallery

Lisson Gallery is one of the most influential and longest-running international contemporary art galleries in the world. Today the gallery supports and promotes the work of more than 60 international artists across two spaces in London, two in New York, one in Shanghai, as well as temporary spaces opened in 2020 in East Hampton and London's Mayfair district. Established in 1967 by Nicholas Logsdail, Lisson Gallery pioneered the early careers of important Minimal and Conceptual artists, such as Art & Language, Carl Andre, Daniel Buren, Donald Judd, John Latham, Sol LeWitt, Richard Long and Robert Ryman among many others. It still works with many of these artists as well as other artists of that generation from Carmen Herrera to the renowned estates of Roy Colmer, Hélio Oiticica, Leon Polk Smith and Ted Stamm.

In its second decade the gallery introduced significant British sculptors to the public for the first time, including Tony Cragg, Richard Deacon, Anish Kapoor, Shirazeh Houshiary and Julian Opie. Since 2000, the gallery has gone on to represent many more leading international artists such as Marina Abramović, Ai Weiwei, John Akomfrah, Susan Hiller, Tatsuo Miyajima and Sean Scully. It is also responsible for raising the international profile of a younger generation of artists led by Cory Arcangel, Nathalie Djurberg & Hans Berg, Ryan Gander, Haroon Mirza, Laure Prouvost, Pedro Reyes and Wael Shawky.

For press enquiries, please contact

Victoria Mitchell, Senior Media & Communications Manager
+44 (0)207 724 2739
victoria@lissongallery.com

i: [@lisson_gallery](#)
t: [@Lisson_Gallery](#)
fb: LissonGallery
www.lissongallery.com

LISSON GALLERY



Ryan Gander

The fallout of being present, or The squatters (Socks meet Hammons' Untitled (Night Train) (1989)) 2020

Wood, latex, resin, synthetic fur, paint, animatronics

10.2 x 50.8 x 34.3 cm

4 x 20 x 13 1/2 in

GAND200031



Joanna Pousette-Dart

3 Part Variation #1 2010

Acrylic on canvas on wood panel

Installed 174 x 317.5 x 3.8 cm

Installed 68 1/2 x 125 x 1 1/2 in

POUS100002



Ai Weiwei

Level 2019

Cast iron

198 x 434 x 237 cm

77 7/8 x 170 3/4 x 93 1/4 in

ed. 2 of 2 + 1 AP

WEIW190002-2



Laure Prouvost

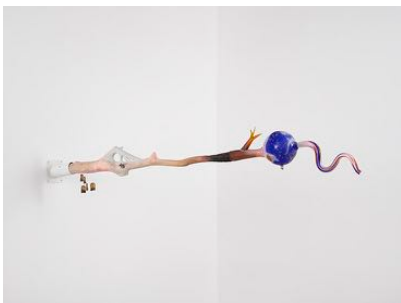
The Hidden Paintings Grandma Improved - Together Ailleur 2019

Paint on canvas (triptych)

151 x 317 x 87.5 cm

59 3/8 x 124 3/4 x 34 3/8 in

PROU190180



Laure Prouvost

Swallow We Will Feed The World Hybrid Branch 2020

Willow branch, wood filler, glass element, tea cup, tea bags, resin puddle, metal holder

6 cm diameter bottom, 286 cm length

PROU200035

LISSON GALLERY



Anish Kapoor

Oriental Blue and Black Mist satin 2019
Aluminium and paint
220 x 220 x 47 cm
86 1/2 x 86 1/2 x 18 1/2 in
KAPO190054



Mary Corse

Untitled (White with Black Reflective Inner Band) 2020
Acrylic squares and glass microspheres in acrylic on canvas
106.7 x 106.7 x 7.6 cm
42 x 42 x 3 in
CORS200010



Ai Weiwei

Coca Cola Vase 2015
Han Dynasty vase (206 BC- 220AD) and paint
24 x 34 x 37 cm
9 3/8 x 13 3/8 x 14 1/2 in
WEIW150089



Stanley Whitney

Untitled 1996
Oil on linen
190.5 x 226.1 x 4 cm
75 x 89 x 1.5 in
WHIT960007



Hugh Hayden

I Corinthian 11:24 2020
Pine
84 x 61 cm
33 x 24 in
HAYD200043

LISSON GALLERY



Ryan Gander

Logic murders magic (Twelfth page) 2020

A pencil drawing found on page 12 of the artist's sketch book, framed and cast in graphite.

55 x 42 x 6 cm

21 5/8 x 16 1/2 x 2 1/4 in

GAND200040



Allora & Calzadilla

Electromagnetic Field (September 1, 2020, Meter Number 96215234, Consumption Charge 425kWh x \$0.04944, Consumption Charge for Additional 805 kWh x \$0.05564, Fuel Charge 1,230kWh x \$0.05534, Purchase Power Charge 1,230kWh x \$0.046489, Municipalities Charge 2020)

Iron filings on mirror foil

209.5 x 208.5 x 4.5 cm

82 3/8 x 82 x 1 3/4 in

A&C200003



Haroon Mirza

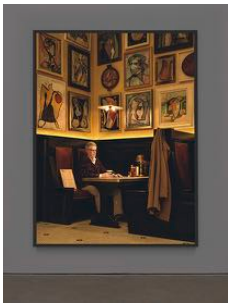
Attraction and illumination 2020

Mixed media and addressable LEDs

155 x 164 x 7 cm

61 x 64 1/2 x 2 3/4 in

MIRZ200002



Rodney Graham

Artist in Artists' Bar, 1950's 2016

Painted aluminum lightbox with transmounted chromogenic transparency

241.3 x 181.9 x 17.8 cm

95 x 71 5/8 x 7 in

API of 4 + 1 AP

GRAR160003-API



Pedro Reyes

Disarm (Guitar XVI) 2015

Metal

110 x 36.5 x 6.5 cm

43 1/4 x 14 3/8 x 2 1/2 in

REYE150021

LISSON GALLERY



Bernard Piffaretti

Untitled 2020
Acrylic on canvas
50 x 50 cm
19 5/8 x 19 5/8 in
PIFF200002



John Akomfrah

Peripeteia 2012
Single channel HD colour video, 5.1 sound
ed. 3 of 5 + 2 APs
AKOMI20002-3



Tony Cragg

Gate 2019
Bronze
56 x 62 x 55 cm
22 x 24 3/8 x 21 5/8 in
CRAGI90012



Christopher Le Brun

Saw 2018
Oil on canvas
140.5 x 130.5 cm
55 1/4 x 51 3/8 in
BRUNI80048