

HAUSER & WIRTH

32 EAST 69TH STREET NEW YORK NY 10021
TELEPHONE +1 212 794 4970 FACSIMILE +1 212 794 4971

Press Release

Media contact:

Andrea Schwan, Andrea Schwan Inc.

+1 917 371 5023, hwny@andreaschwan.com

First New York Solo Exhibition for Caro Niederer to Go On View in New York City

Hauser & Wirth New York

June 27 – July 27, 2012

Opening: Wednesday, June 27, 6 – 8 pm

New York...Hauser & Wirth New York is pleased to present an exhibition of eighteen new paintings by Caro Niederer – the first New York solo show for an internationally admired Swiss artist whose practice encompasses painting, sculpture, tapestries, photography and video.

'Caro Niederer. Paintings' will open to the public on June 27th and remain on view at the gallery through July 27th.

Rather than self-contained art objects, Niederer's paintings are open invitations to experiences that exist between the process of their production and the phenomenon of sense memory. Her starting point is usually a found photograph, picture postcard or personal snapshot of such deceptively ordinary subjects as a sliver of domestic interior, a beguiling but anonymous landscape, a pleasant vacation moment, or a passage glanced between buildings. In an open, provisional and almost childlike style, Niederer recreates these visual fragments into seemingly untroubled pictures that exploit a fundamental formal theme – the transformation of a photographic image through its replication into another medium – to plumb layers of reality and interpretation. Her paintings describe



lyrical brushmarks and a palette of saturated, luminous cerulean blue, blazing magenta, ochre, and electric green. Large-scale renderings of a tabletop dotted with books and a vase of flowers ('Reading' 2011) or an office that has just been tidied for the night ('Desk, View and Chandelier' 2011) are laconic and poetic. 'Vada' (2012) captures figures on the beach, seen shimmering at a distance as if through half-closed eyes in the heat of the day. These paintings suggest both a distillation of the commonplace through nostalgia and a very particular brand of bittersweet sadness that comes with acknowledging the gulf between the world around us and our fleeting experience of it.

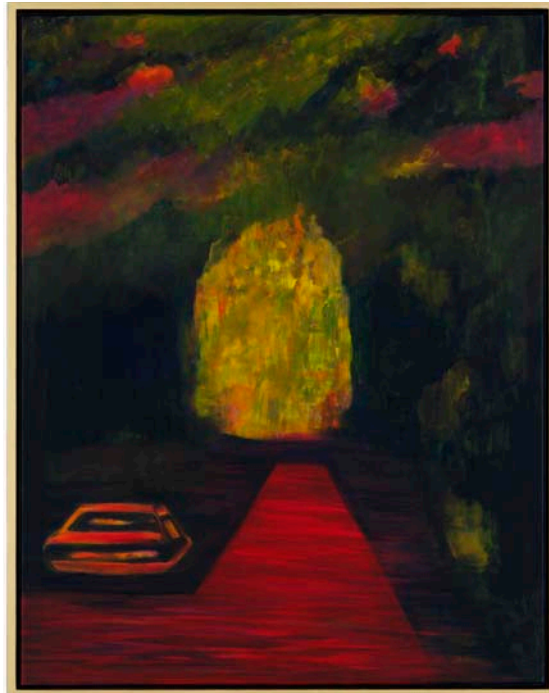
With a duo of canvases in 'Caro Niederer. Paintings', the artist encapsulates all of her themes into a single two-part visual essay. As their titles imply, 'Häldeliweg uphill' and 'Häldeliweg downhill' (both 2011) capture opposing views of a single street familiar to the artist, one that she has traversed innumerable times on her

HAUSER & WIRTH

way to and from a key, fixed coordinate of her life. In different colors, at different times of day and in different seasons, Niederer's small street – a passage between intimacy and distance – is a poignant metaphor for the elasticity of time.

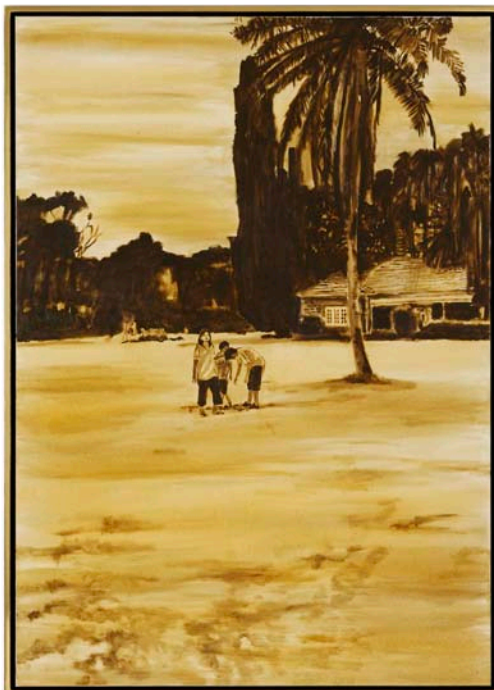
As the first exhibition ever devoted solely to the artist's paintings, the Hauser & Wirth show will include an historical 'capsule survey' of Niederer's works from the early 1990s. These pictures – including small canvases on board presenting images from the Kama Sutra, as well as the paintings 'Karen Blixen's Garden' (2006) and 'Rieterpark II' (2000) from Niederer's sepia-toned 'Brown Paintings' series – will be presented in the skylit room at the south end of the gallery's first floor. Here, the walls will be colored in an enveloping deep crimson tone that is a central element of the artist's newer works.

By subjecting factual photographic compositions to the process of hand rendering and the materiality of paint, Niederer surrenders control and allows memory to cohere with anticipation. 'My practice is like an open spiral that moves with time,' she has said. 'My work revolves around the subject of memory and the question of what remains that is valuable.'



About the Artist

Caro Niederer lives and works in Zurich, where she was born in 1963. She is among Switzerland's most recognized and admired of contemporary artists. Drawing upon day-to-day situations and images from her private life and immediate surroundings, Niederer has built a body of work across a variety of



mediums, from painting, sculpture and tapestry, to photography and video, all part of an ongoing meditation about time and the emotional tensions that arise in the realm between life's 'factual' elements and our memories of them.

The artist's work has been exhibited in numerous shows at museums and galleries throughout Europe, including CAC Malaga (2006), Museum Haus Lange, Krefeld (2006), Douglas Hyde Gallery, Dublin (2005), Ikon Gallery Birmingham (2005) and Kunstmuseum St. Gallen (2004).

About Hauser & Wirth

Hauser & Wirth is a global enterprise representing over 50 established and emerging contemporary artists, including Ida Applebroog, Phyllida Barlow, Louise Bourgeois, Christoph Büchel, David Claerbout, Martin Creed, Berlinde De Bruyckere, Martin Eder, Ellen Gallagher, Isa Genzken, Dan Graham, Rodney Graham, Subodh Gupta, Mary Heilmann, Andy Hope 1930, Roni Horn, Thomas

HAUSER & WIRTH

Houseago, Matthew Day Jackson, Richard Jackson, Rashid Johnson, Josephsohn, Rachel Khedoori, Bharti Kher, Guillermo Kuitca, Maria Lassnig, Paul McCarthy, Joan Mitchell, Ron Mueck, Caro Niederer, Christopher Orr, Djordje Ozbolt, Michael Raedecker, Pipilotti Rist, Anri Sala, Wilhelm Sasnal, Christoph Schlingensiefel, Roman Signer, Anj Smith, Monika Sosnowska, Diana Thater, André Thomkins, Ian Wallace, Zhang Enli, David Zink Yi, and Jakub Julian Ziolkowski. Hauser & Wirth also represents the estates of Eva Hesse, Allan Kaprow, Lee Lozano, Jason Rhoades and Dieter Roth, as well as the Henry Moore Family Collection.

The gallery was founded in Zurich in 1992 by Iwan and Manuela Wirth and Ursula Hauser. In 1996, Hauser & Wirth opened a space in the former Löwenbräu brewery building, along with other contemporary art galleries, the Kunsthalle Zürich, and migros museum für gegenwartskunst. In 2003, the gallery expanded with the opening of Hauser & Wirth London on Piccadilly in an historic building designed by Sir Edwin Lutyens, adding a new and energetic dimension to London's growing importance as an international art center. In 2006, Hauser & Wirth at Colnaghi was created on London's Old Bond Street. Hauser & Wirth New York opened to the public on the Upper East Side of Manhattan in September 2009. In October 2010, the gallery opened a new London space on Savile Row.

In September 2010, Hauser & Wirth re-located their Zurich space to a new temporary location at Hubertus Exhibitions while the Löwenbräu building undergoes major renovation. The gallery will return to the Limmatstrasse facility in June 2012 and also will expand its global operations with a second space in New York City at 511 West 18th Street. That facility will open in fall 2012 in conjunction with the gallery's 20th anniversary.

Hauser & Wirth New York is open to visitors Monday through Friday, 10 am until 6 pm during the months of June and July. The general public can find additional information about the gallery, its exhibitions and programs online at: www.hauserwirth.com.

For additional press information or to obtain images for publication, please contact hwny@andreaschwan.com.

Forthcoming exhibitions:

Gutai Group
September 12 – October 27, 2012

Phyllida Barlow
November 2 – December 22, 2012

Press Contact:
Andrea Schwan
hwny@andreaschwan.com
+1 917 371 5023

www.facebook.com/hauserwirth
www.twitter.com/hauserwirth
www.youtube.com/hauserwirth1



Full Copyright and Courtesy Credits:

All images:
© Caro Niederer
Courtesy the artist and Hauser & Wirth

Lesen (Reading)
2011
Oil on canvas
146 x 114 cm / 57 1/2 x 44 7/8 in

Häldeliweg bergauf (Häldeliweg uphill)
2011
Oil on canvas
146 x 114 cm / 57 1/2 x 44 7/8 in

Häldeliweg bergab (Häldeliweg downhill)
2011
Oil on canvas
146 x 114 cm / 57 1/2 x 44 7/8 in

Karen Blixen's Garden
2006
Oil on canvas
210 x 150 cm / 82 5/8 x 59 in