

# AR CO

February 26<sup>th</sup> - March 1<sup>st</sup>, 2020

# Madrid

Julian Charrière + Julius von Bismarck

Talia Chetrit

Marcel Dzama

João Maria Gusmão + Pedro Paiva

Federico Herrero

Jonathan Meese

Naufus Ramírez-Figueroa

Henning Strassburger

Julius von Bismarck

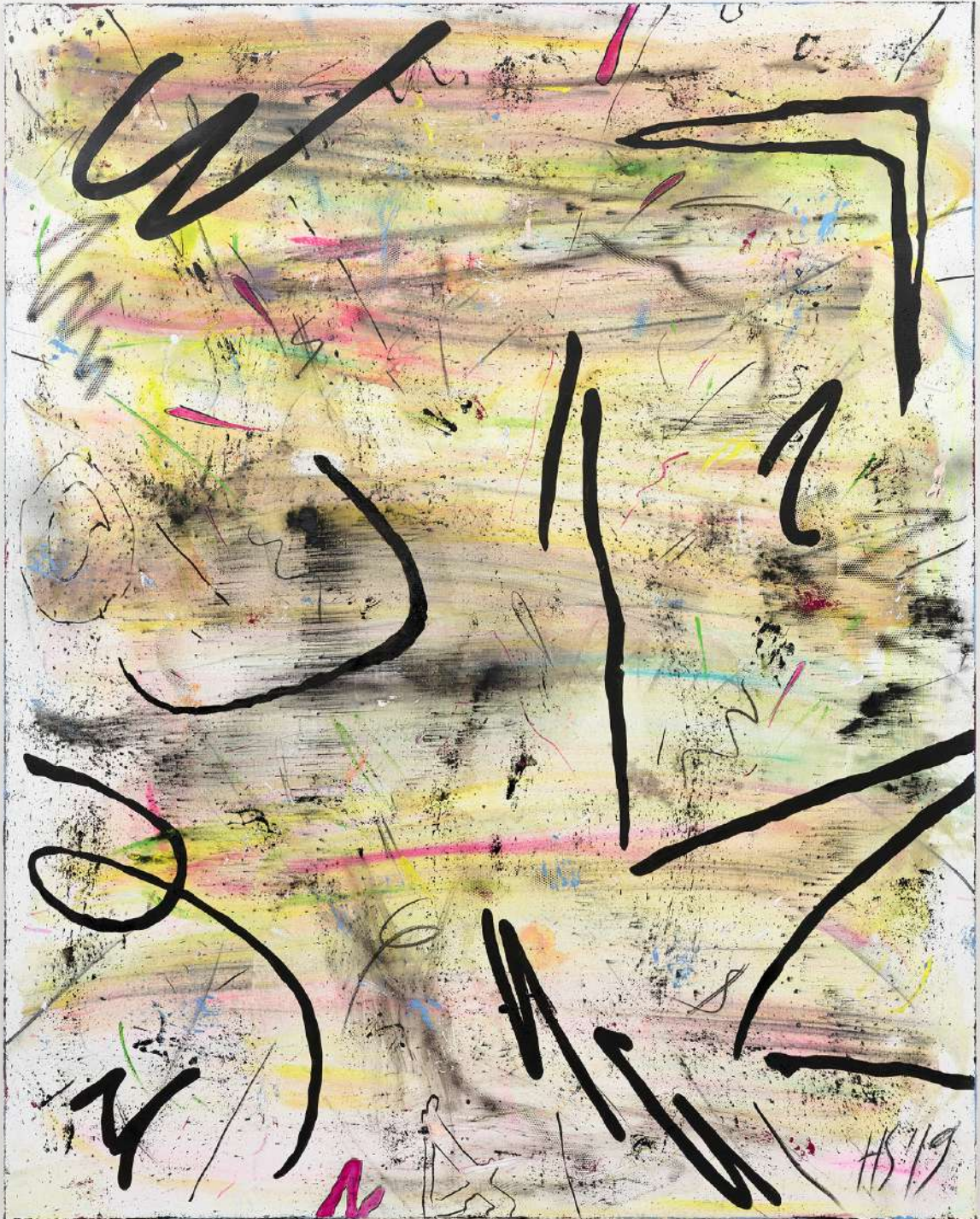
Sophie von Hellermann

Claudia Wieser

Sies + Höke

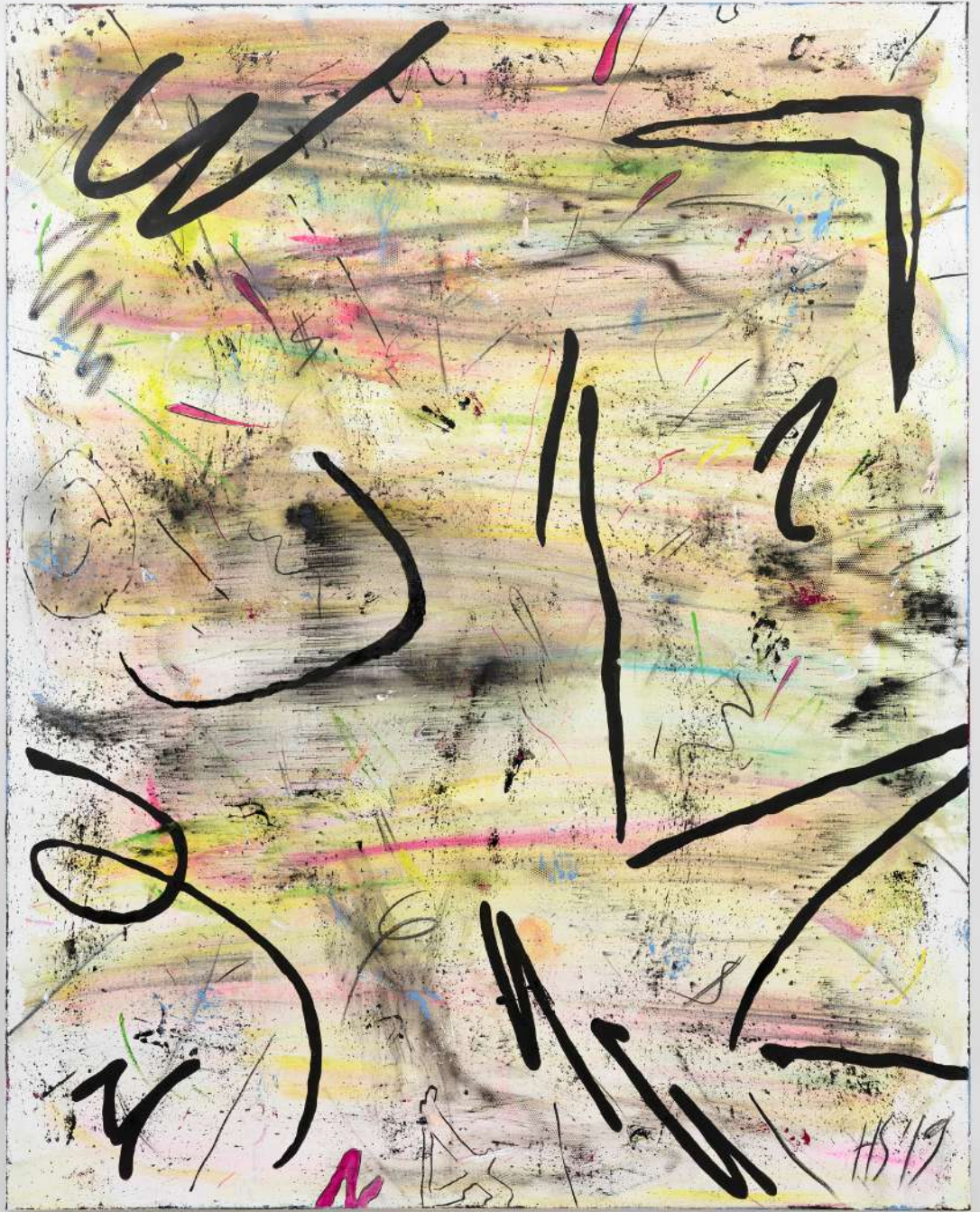
Booth 7D07





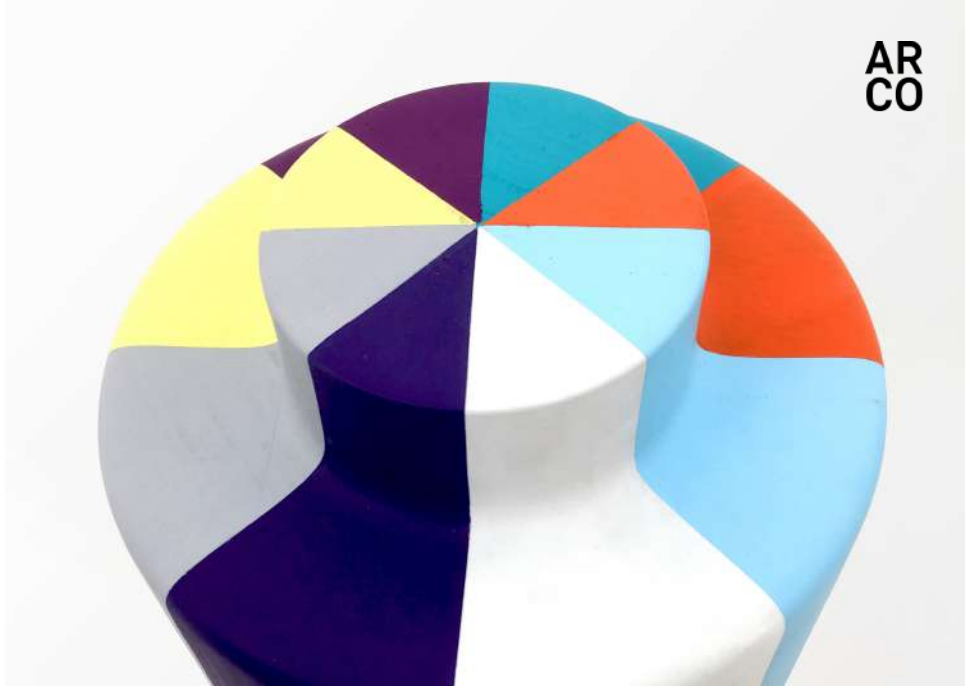
Henning Strassburger | *High Speed Shot*, 2019 | Oil on canvas | 250 x 200 x 4 cm / 98.5 x 78.7 x 1.6 inches





Sies + Höke  
Booth 7D07

AR  
CO



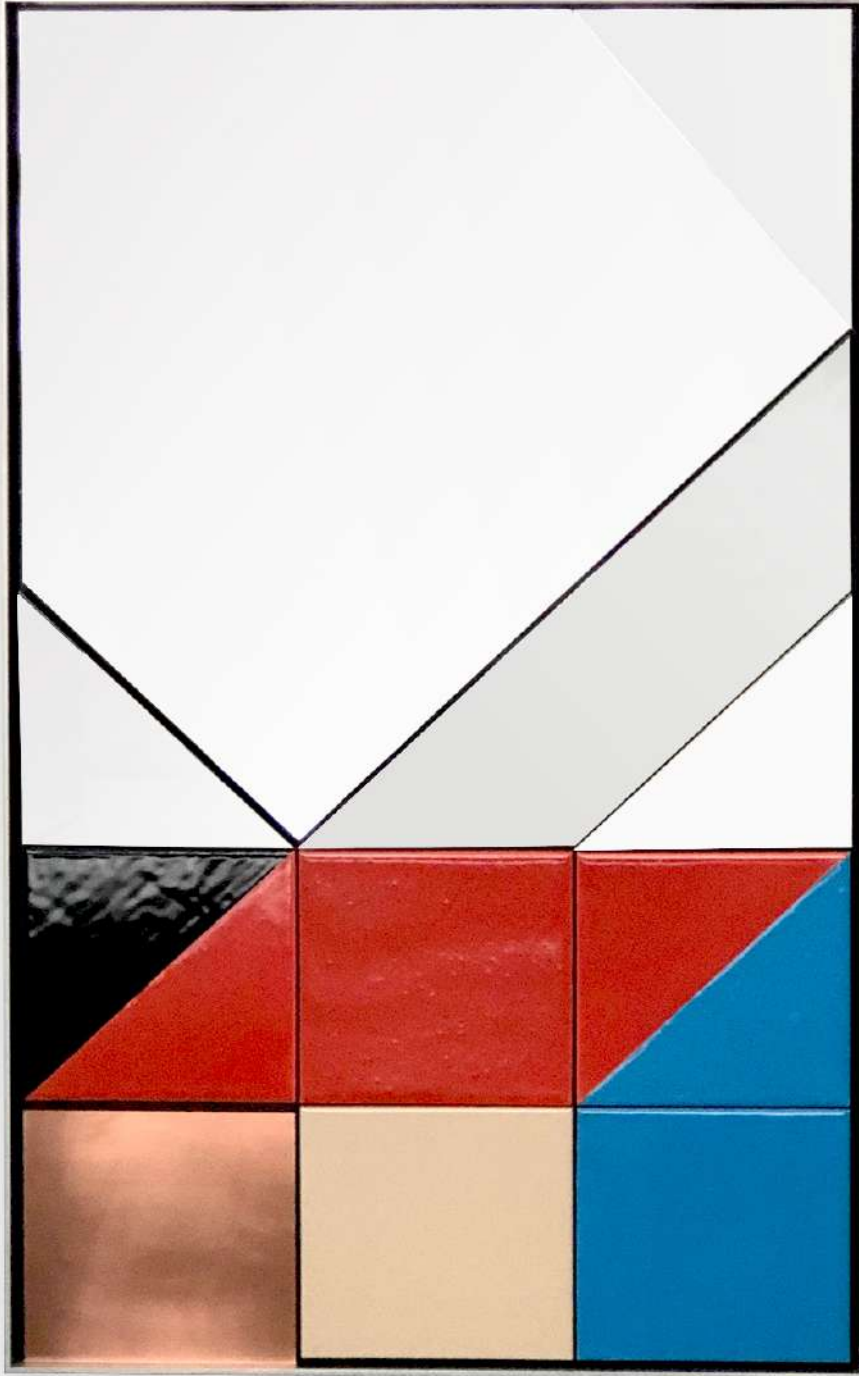
Claudia Wieser | *Untitled*, 2018 | Acrylic paint and ink on wood | 44 x 22 x 22 cm / 17.3 x 8.7 x 8.7 inches



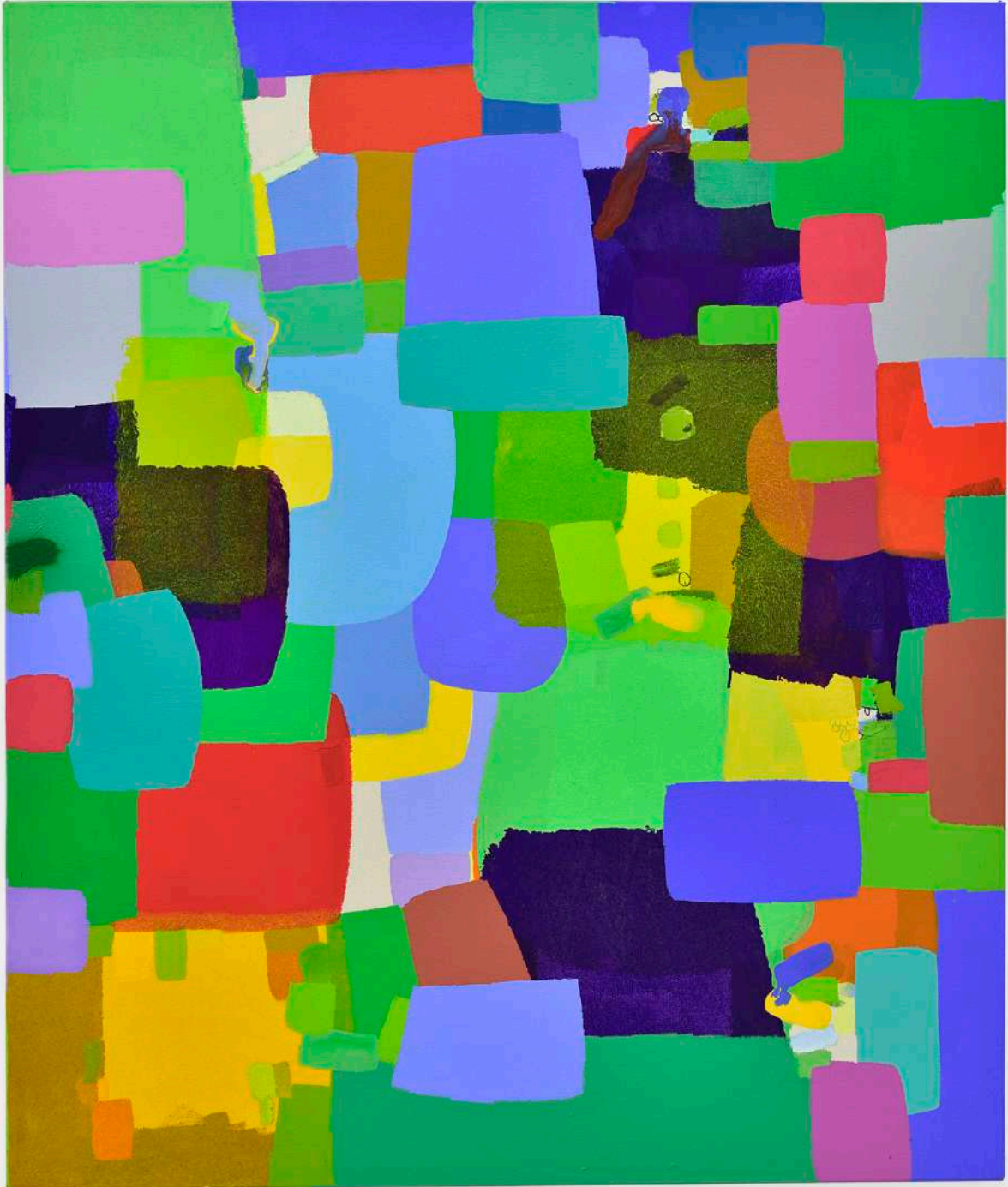
































**Julian Charrière + Julius von Bismarck** | *Island in the Sky, We Must Ask You to Leave (vertical viewpoint)*, 2018 | Archival pigment print on Hahnemühle Photo Rag Baryta | 154 x 110 cm / 60.6 x 43.3 inches; framed 156.7 x 112.8 x 4.2 cm / 61.7 x 44.4 x 1.7 inches | Ed. 3 + 2 AP



Julius von Bismarck | I like the flowers (*Strelitzia Nicolai*), 2017 | Pressed and dried plant, mounted on stainless steel plate |  
257 x 77 cm / 101.2 x 30.3 inches



Sies + Höke  
Booth 7D07



AR  
CO





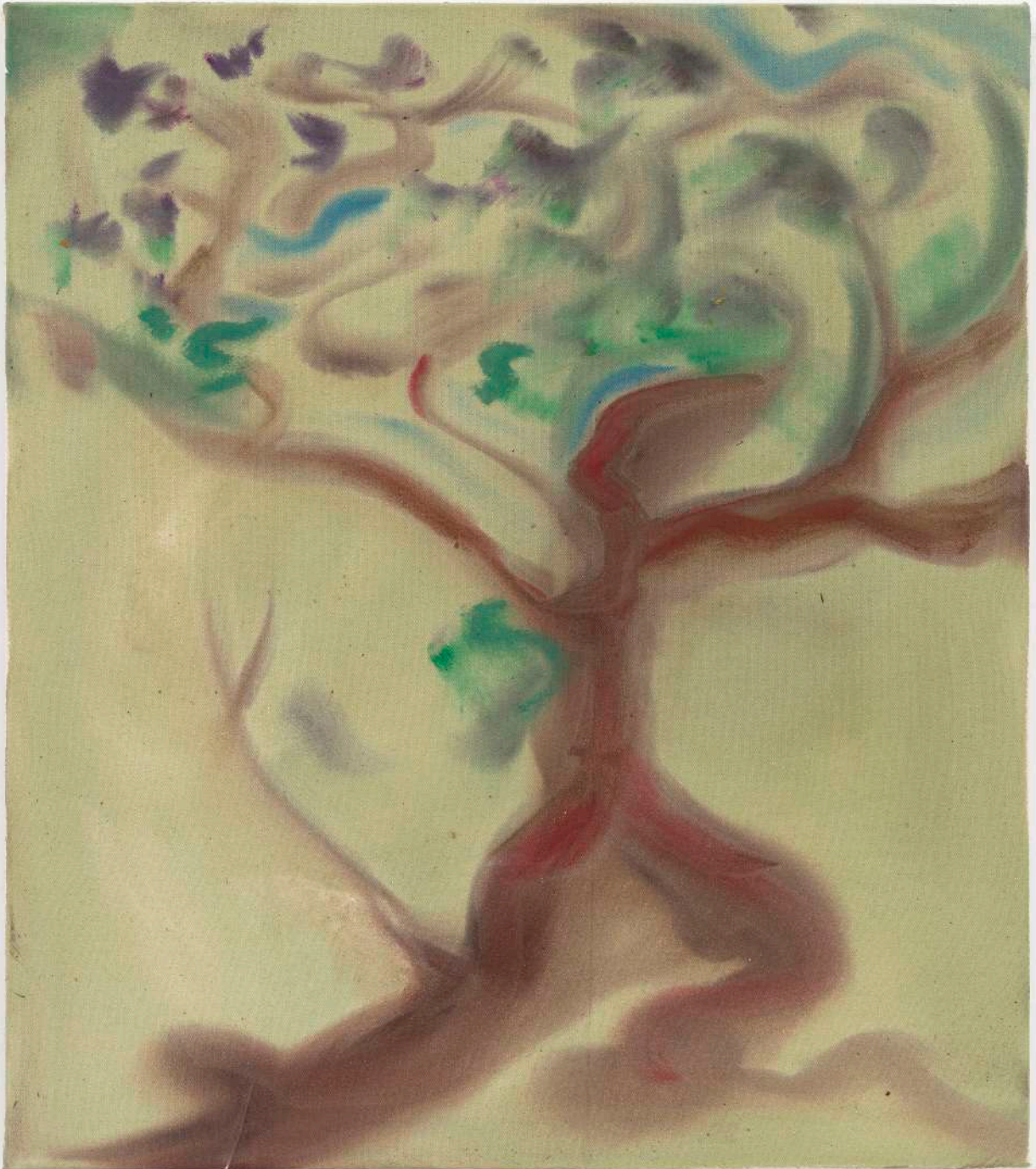
Julius von Bismarck | I like the flowers (*Alocasia Wentii*), 2017 | Pressed and dried plant, mounted on stainless steel plate |  
144 x 152 cm / 56.7 x 59.8 inches

Sies + Höke  
Booth 7D07









Sophie von Hellermann | *Tree jig*, 2020 | Acrylic on canvas | 81.5 x 71.5 x 2 cm / 32.1 x 28.2 x 0.8 inches







Sies + Höke  
Booth 7D07



AR  
CO





**Jonathan Meese** | *DER CHEFDRACHE "GERMANIATMOS"*, 2019 | Oil and acrylic on nettle | 140.3 x 210.5 x 3.3 cm / 55.2 x 82.9 x 1.3 inches;  
framed 143 x 213 x 5.1 cm / 56.3 x 83.9 x 2 inches





**Jonathan Meese** | *WURSTHAI-TAUCHERGLOCKEN-JOE'S FILL!*, 2019 | Oil and acrylic on nettle | 210.4 x 140.2 x 3.3 cm / 82.83 x 55.2 x 1.3 inches;  
framed 213 x 143 x 5.1 cm / 83.9 x 56.3 x 2 inches

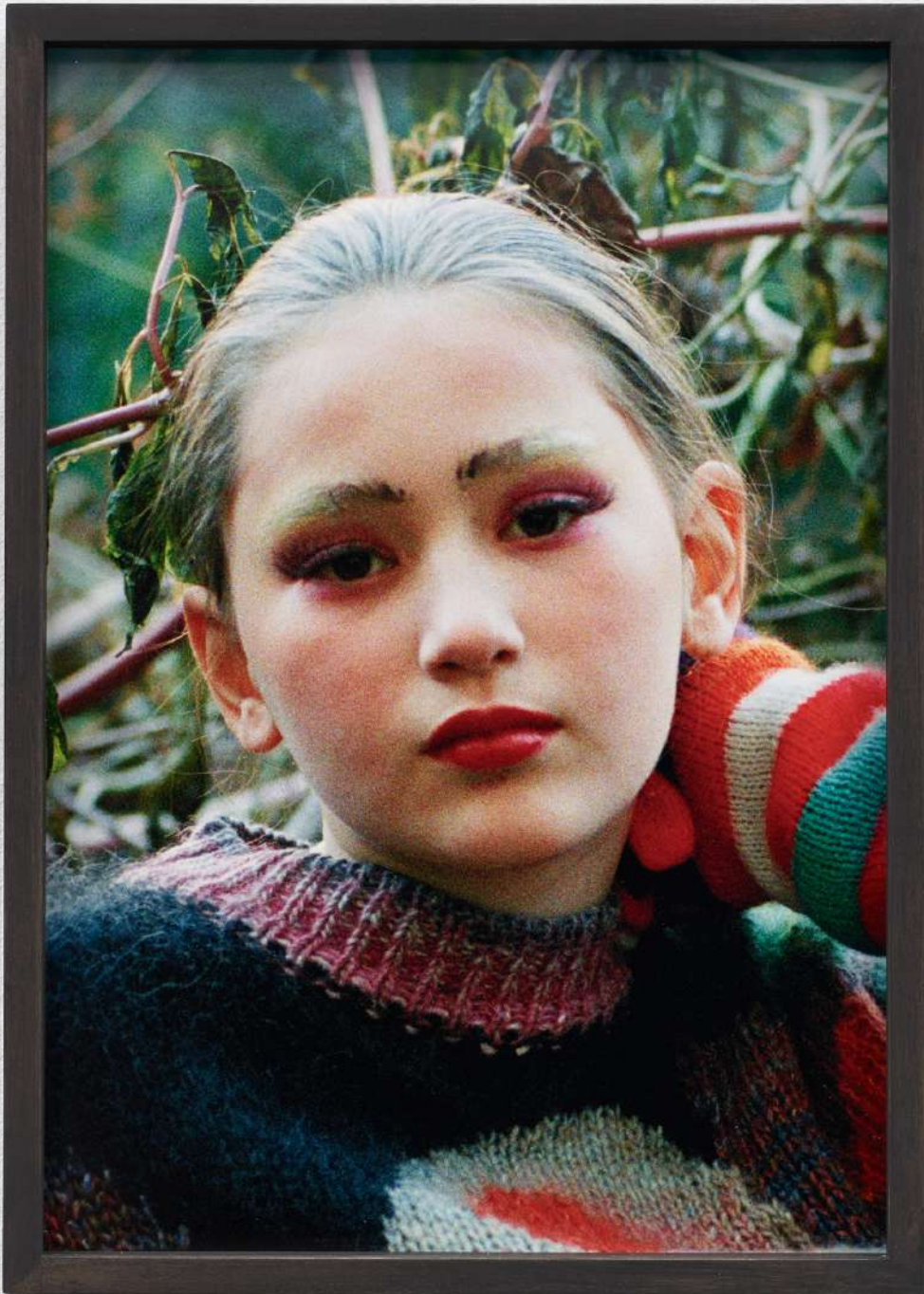


Sies + Höke  
Booth 7D07

AR  
CO







**Talia Chetrit** | *Ever (Corey Tippin Make-up)*, 2018 | Inkjet print mounted on aluminum | 35.6 x 25.4 cm / 14 x 10 inches; framed 33.7 x 26.5 x 3.5 cm / 13.3 x 10.4 x 1.4 inches | Ed. 4 + 2 AP